

# Jagged2 (G-12): sc-518087

## BACKGROUND

The LIN-12/Notch family of transmembrane receptors is believed to play a central role in development by regulating cell fate decisions. Ligands for Notch include Jagged1, Jagged2 and Delta. Jagged is a membrane protein and can activate Notch and prevent myoblast differentiation by inhibiting the expression of muscle regulatory and structural genes. It is involved in mammalian cardiovascular development and in cell-fate decisions during hematopoiesis. Jagged is expressed in adult and fetal tissues, and the expression is up-regulated in cervical squamous cell carcinoma. Familial Tetralogy of Fallot, the most common form of complex congenital heart disease, is caused by a mutation in the JAG1 gene.

## REFERENCES

1. Laborda, J., et al. 1993. Dlk, a putative mammalian homeotic gene differentially expressed in small cell lung carcinomas and neuroendocrine tumor cell line. *J. Biol. Chem.* 268: 3817-3820.
2. Simpson, P. 1994. *The Notch receptors.* Austin, TX: R.G. Landes Company.
3. Lindsell, C.E., et al. 1995. Jagged: a mammalian ligand that activates Notch1. *Cell* 80: 909-917.
4. Valsecchi, C., et al. 1997. JAGGED2: a putative Notch ligand expressed in the apical ectodermal ridge and in sites of epithelial-mesenchymal interactions. *Mech. Dev.* 69: 203-207.

## CHROMOSOMAL LOCATION

Genetic locus: JAG2 (human) mapping to 14q32.33.

## SOURCE

Jagged2 (G-12) is a mouse monoclonal antibody specific for an epitope mapping between amino acids 1217-1238 at the C-terminus of Jagged2 of human origin.

## PRODUCT

Each vial contains 200 µg IgG<sub>1</sub> kappa light chain in 1.0 ml of PBS with < 0.1% sodium azide and 0.1% gelatin.

## APPLICATIONS

Jagged2 (G-12) is recommended for detection of Jagged2 of human origin by Western Blotting (starting dilution 1:100, dilution range 1:100-1:1000), immunoprecipitation [1-2 µg per 100-500 µg of total protein (1 ml of cell lysate)], immunofluorescence (starting dilution 1:50, dilution range 1:50-1:500) and solid phase ELISA (starting dilution 1:30, dilution range 1:30-1:3000).

Suitable for use as control antibody for Jagged2 siRNA (h): sc-39672, Jagged2 shRNA Plasmid (h): sc-39672-SH and Jagged2 shRNA (h) Lentiviral Particles: sc-39672-V.

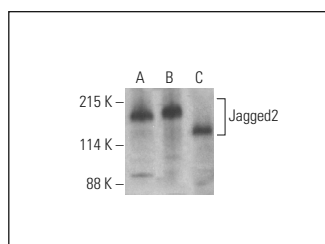
Molecular Weight of Jagged2: 150 kDa.

Positive Controls: HUV-EC-C whole cell lysate: sc-364180, COLO 320DM cell lysate: sc-2226 or NCI-H929 whole cell lysate: sc-364786.

## RECOMMENDED SUPPORT REAGENTS

To ensure optimal results, the following support reagents are recommended: 1) Western Blotting: use m-IgGκ BP-HRP: sc-516102 or m-IgGκ BP-HRP (Cruz Marker): sc-516102-CM (dilution range: 1:1000-1:10000), Cruz Marker™ Molecular Weight Standards: sc-2035, UltraCruz® Blocking Reagent: sc-516214 and Western Blotting Luminol Reagent: sc-2048. 2) Immunoprecipitation: use Protein A/G PLUS-Agarose: sc-2003 (0.5 ml agarose/2.0 ml). 3) Immunofluorescence: use m-IgGκ BP-FITC: sc-516140 or m-IgGκ BP-PE: sc-516141 (dilution range: 1:50-1:200) with UltraCruz® Mounting Medium: sc-24941 or UltraCruz® Hard-set Mounting Medium: sc-359850.

## DATA



Jagged2 (G-12): sc-518087. Western blot analysis of Jagged2 expression in NCI-H929 (A), HUV-EC-C (B) and COLO 320DM (C) whole cell lysates. Detection reagent used: m-IgGκ BP-HRP (Cruz Marker): sc-516102-CM.

## STORAGE

Store at 4° C, **\*\*DO NOT FREEZE\*\***. Stable for one year from the date of shipment. Non-hazardous. No MSDS required.

## RESEARCH USE

For research use only, not for use in diagnostic procedures.

## PROTOCOLS

See our web site at [www.scbt.com](http://www.scbt.com) for detailed protocols and support products.