

S-100 α/β chain (6G1): sc-52206

BACKGROUND

The family of EF-hand type Ca^{2+} -binding proteins includes calbindin (previously designated vitamin D-dependent Ca^{2+} -binding protein), S-100 α and β , calgranulins A (also designated MRP8), B (also designated MRP14) and C (S-100 like proteins), and the parvalbumin family members, including parvalbumin α and parvalbumin β (also designated oncomodulin). The S-100 protein is involved in the regulation of cellular processes such as cell cycle progression and differentiation. Research also indicates that the S-100 protein may function in the activation of Ca^{2+} induced Ca^{2+} release, inhibition of microtubule assembly and inhibition of protein kinase C mediated phosphorylation. Two S-100 subunits, sharing 60% sequence identity, have been described as S-100 α chain and S-100 β chain. Three S-100 dimeric forms have been characterized, differing in their subunit composition of either two α chains, two β chains or one α and one β chain. S-100 localizes to the cytoplasm and nuclei of astrocytes, Schwann's cells, ependymomas and astroglomas. S-100 is also detected in almost all benign naevi, malignant melanocytic tumours and in Langerhans cells in the skin. Calbindin, S-100 proteins and parvalbumin proteins are each expressed in neural tissues. In addition, S-100 α and β are present in a variety of other tissues, and calbindin is present in intestine and kidney.

REFERENCES

1. Pfyffer, G.E., et al. 1987. Developmental and functional studies of parvalbumin and Calbindin D28K in hypothalamic neurons grown in serum-free medium. *J. Neurochem.* 49: 442-451.
2. Heizmann, C.W. 1988. Calcium-binding proteins of the EF-type. *J. Cardiovasc. Pharmacol.* 5: S30-S37.
3. Kagi, U., et al. 1988. Developmental appearance of the Ca^{2+} -binding proteins parvalbumin, Calbindin D28K, S-100 proteins and calmodulin during testicular development in the rat. *Cell Tissue Res.* 252: 359-365.
4. Zimmer, D.B., et al. 1991. Isolation of a rat S-100 α cDNA and distribution of its mRNA in rat tissues. *Brain Res. Bull.* 27: 157-162.
5. Rickmann, M. and Wolff, J.R. 1995. S-100 protein expression in subpopulations of neurons of rat brain. *Neuroscience* 67: 977-991.
6. Wang, Y.Z. and Christakos, S. 1995. Retinoic acid regulates the expression of the calcium binding protein, Calbindin D28K. *Mol. Endocrinol.* 9: 1510-1521.
7. Muntener, M., et al. 1995. Increase of skeletal muscle relaxation speed by direct injection of parvalbumin cDNA. *Proc. Natl. Acad. Sci. USA* 92: 6504-6508.
8. Hitomi, J., et al. 1996. A novel calcium-binding protein in amniotic fluid. CAAF1: its molecular cloning and tissue distribution. *J. Cell Sci.* 109: 805-815.
9. Beaudoux, J., et al. 1999. Pathophysiologic aspects of S-100 β protein: a new biological marker of brain pathology. *Ann. Biol. Clin.* 57: 261-272.

CHROMOSOMAL LOCATION

Genetic locus: S100B (human) mapping to 21q22.3, S100A1 (human) mapping to 1q21.3.

SOURCE

S-100 α/β chain (6G1) is a mouse monoclonal antibody raised against S-100 protein of human origin.

PRODUCT

Each vial contains 100 μ g IgG₁ in 1.0 ml of PBS with < 0.1% sodium azide and 0.1% gelatin.

APPLICATIONS

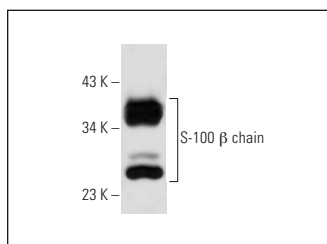
S-100 α/β chain (6G1) is recommended for detection of S-100 $\beta\beta$ and S100 $\alpha\beta$ of human origin by Western Blotting (starting dilution 1:200, dilution range 1:100-1:1000), immunoprecipitation [1-2 μ g per 100-500 μ g of total protein (1 ml of cell lysate)] and solid phase ELISA (starting dilution 1:30, dilution range 1:30-1:3000).

Molecular Weight of S-100 α chain: 11 kDa.

Molecular Weight of S-100 α/β chain dimer: 21 kDa.

Molecular Weight of S-100 β chain: 10 kDa.

DATA



S-100 α/β chain (6G1): sc-52206. Western blot analysis of human recombinant S-100 β .

SELECT PRODUCT CITATIONS

1. Luo, L., et al. 2020. Application of bioactive hydrogels combined with dental pulp stem cells for the repair of large gap peripheral nerve injuries. *Bioact. Mater.* 6: 638-654.

STORAGE

Store at 4° C, ****DO NOT FREEZE****. Stable for one year from the date of shipment. Non-hazardous. No MSDS required.

RESEARCH USE

For research use only, not for use in diagnostic procedures.



See **S-100 β chain (C-3): sc-393919** for S-100 β chain antibody conjugates, including AC, HRP, FITC, PE, and Alexa Fluor® 488, 546, 594, 647, 680 and 790.