

TAFI (19E2): sc-52241

BACKGROUND

The thrombin-activatable fibrinolysis inhibitor (TAFI), also designated procarboxypeptidase B2 or procarboxypeptidase U, is a hepatically secreted zymogen that downregulates fibrinolysis when activated by thrombin. It is synthesized in the liver and circulates in plasma in its proenzyme form. When activated, TAFI removes C-terminal arginine or lysine residues from biologically active peptides such as kinins or anaphylatoxins. TAFI cleaves the lysine residues from fibrin, which prevents plasminogen from activation into plasmin and retards the lysis of a fibrin clot. Elevated concentration of TAFI in blood is considered as a risk factor for venous thrombosis, whereas a deficiency might contribute to the severity of bleeding disorders in hemophilias A and B. Decreased levels of TAFI are found in chronic liver disease.

REFERENCES

1. Von dem Borne, P.A., Bajzar, L., Meijers, J.C., Nesheim, M.E. and Bouma, B.N. 1997. Thrombin-mediated activation of fibrinolysis inhibitor-dependent inhibition of fibrinolysis. *J. Clin. Invest.* 99: 2323-2327.
2. Zhao, L., Morser, J., Bajzar, L., Nesheim, M. and Nagashima, M. 1999. Identification and characterization of two thrombin-activatable fibrinolysis inhibitor isoforms. *Thromb. Haemost.* 80: 949-955.
3. Hall, S.W., Nagashima, M., Zhao, L., Morser, J. and Leung, L.L. 1999. Thrombin interacts with thrombomodulin, protein C and thrombin-activatable fibrinolysis inhibitor via specific and distinct domains. *J. Biol. Chem.* 274: 25510-25516.
4. Juhan-Vague, I., Renucci, J.F., Grimaux, M., Morange, P.E., Gouvernet, J., Gourmelin, Y. and Alessi, M.C. 2000. Thrombin-activatable fibrinolysis inhibitor antigen levels and cardiovascular risk factors. *Arterioscler. Thromb. Vasc. Biol.* 20: 2156-2161.
5. Bajzar, L. 2000. Thrombin activatable fibrinolysis inhibitor and an antifibrinolytic pathway. *Arterioscler. Thromb. Vasc. Biol.* 20: 2511-2518.
6. van Tilburg, N.H. et al. 2000. Thrombin activatable fibrinolysis inhibitor and the risk for deep vein thrombosis. *Blood* 95: 2855-2859.
7. Silveira, A. et al. 2001. Plasma procarboxypeptidase U in men with symptomatic coronary artery disease. *Thromb. Haemost.* 84: 364-368.
8. Schroeder, V. et al. 2003. Thrombin activatable fibrinolysis inhibitor T coronary artery disease investigated by angiography. *Thromb. Haemost.* 88: 1020-1025.
9. Bouma, B.N. and Meijers, J.C. 2003. Thrombin-activatable fibrinolysis inhibitor (TAFI, plasma procarboxypeptidase B, procarboxypeptidase R, procarboxypeptidase U). *J. Thromb. Haemost.* 1: 1566-1574.

CHROMOSOMAL LOCATION

Genetic locus: CPB2 (human) mapping to 13q14.13.

SOURCE

TAFI (19E2) is a mouse monoclonal antibody raised against thrombin activatable fibrinolysis inhibitor of human origin.

PRODUCT

Each vial contains 100 µg IgG₁ in 1.0 ml of PBS with < 0.1% sodium azide and 0.1% gelatin.

APPLICATIONS

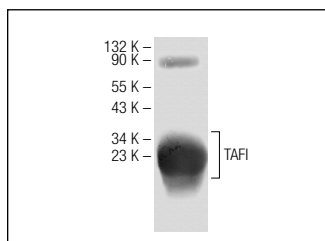
TAFI (19E2) is recommended for detection of TAFI of human origin by Western Blotting (starting dilution 1:200, dilution range 1:100-1:1000) and immunoprecipitation [1-2 µg per 100-500 µg of total protein (1 ml of cell lysate)].

Suitable for use as control antibody for TAFI siRNA (h): sc-63098, TAFI shRNA Plasmid (h): sc-63098-SH and TAFI shRNA (h) Lentiviral Particles: sc-63098-V.

Molecular Weight of TAFI: 48 kDa.

Positive Controls: human plasma extract: sc-364374 or human platelet extract: sc-363773.

DATA



TAFI (19E2): sc-52241. Western blot analysis of TAFI derived from human plasma.

STORAGE

Store at 4° C, ****DO NOT FREEZE****. Stable for one year from the date of shipment. Non-hazardous. No MSDS required.

RESEARCH USE

For research use only, not for use in diagnostic procedures.

PROTOCOLS

See our web site at www.scbt.com for detailed protocols and support products.