

CD45 (158-4D3): sc-52386



The Power to Question

BACKGROUND

CD45 has been identified as a transmembrane glycoprotein, broadly expressed among hematopoietic cells. Multiple isoforms of CD45 are distributed throughout the immune system according to cell type. These isoforms arise because of alternative splicing of exons 4, 5 and 6. The corresponding protein domains are characterized by the binding of monoclonal antibodies specific for CD45RA (exon 4), CD45RB (exon 5), CD45RC (exon 6) and CD45RO (exons 4 to 6 spliced out). The variation in these isoforms is localized to the extracellular domain of CD45, while the intracellular domain is conserved. CD45 functions as a phosphotyrosine phosphatase, a vital component for efficient tyrosine phosphorylation induction by the TCR/CD3 complex. The tyrosine phosphatase activity of CD45 is contained within the conserved intracellular domain. Src and Syk family protein tyrosine kinases are utilized by the TCR/CD3 complex to initiate signaling cascades. Several members of these two families, including Lck, Fyn and ZAP-70, have been implicated as physiological substrates of CD45.

REFERENCES

1. Trowbridge, I.S. 1978. Interspecies spleen-myeloma hybrid producing monoclonal antibodies against mouse lymphocyte surface glycoprotein, T200. *J. Exp. Med.* 148: 313-323.
2. West, K.P., et al. 1986. The demonstration of B cell, T cell and myeloid antigens in paraffin sections. *J. Pathol.* 150: 89-101.
3. Streuli, M., et al. 1987. Differential usage of three exons generates at least five different mRNAs encoding human leukocyte common antigens. *J. Exp. Med.* 166: 1548-1566.
4. Hall, P.A., et al. 1987. New marker of B lymphocytes, MB2: comparison with other lymphocyte subset markers active in conventionally processed tissue sections. *J. Clin. Pathol.* 40: 151-156.

CHROMOSOMAL LOCATION

Genetic locus: PTPRC (human) mapping to 1q31.3.

SOURCE

CD45 (158-4D3) is a mouse monoclonal antibody raised against an isoform which consists of A, B and C determinants of CD45 of human origin.

PRODUCT

Each vial contains 200 µg IgG_{2a} kappa light chain in 1.0 ml of PBS with < 0.1% sodium azide and 0.1% gelatin.

CD45 (158-4D3) is available conjugated to either phycoerythrin (sc-52386 PE) or fluorescein (sc-52386 FITC), 200 µg/ml, for WB (RGB), IF, IHC(P) and FCM.

STORAGE

Store at 4° C, **DO NOT FREEZE**. Stable for one year from the date of shipment. Non-hazardous. No MSDS required.

RESEARCH USE

For research use only, not for use in diagnostic procedures.

APPLICATIONS

CD45 (158-4D3) is recommended for detection of CD45 of human origin by Western Blotting (starting dilution 1:200, dilution range 1:100-1:1000), immunoprecipitation [1-2 µg per 100-500 µg of total protein (1 ml of cell lysate)], immunofluorescence (starting dilution 1:50, dilution range 1:50-1:500), immunohistochemistry (including paraffin-embedded sections) (starting dilution 1:50, dilution range 1:50-1:500) and flow cytometry (1 µg per 1 x 10⁶ cells).

Suitable for use as control antibody for CD45 siRNA (h): sc-29251, CD45 shRNA Plasmid (h): sc-29251-SH and CD45 shRNA (h) Lentiviral Particles: sc-29251-V.

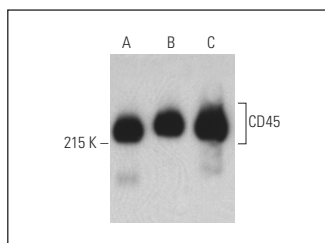
Molecular Weight of CD45: 180-220 kDa.

Positive Controls: GA-10 whole cell lysate: sc-364230, NAMALWA cell lysate: sc-2234 or U-698-M whole cell lysate: sc-364799.

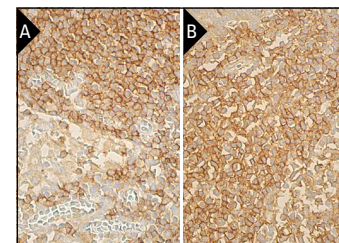
RECOMMENDED SUPPORT REAGENTS

To ensure optimal results, the following support reagents are recommended: 1) Western Blotting: use m-IgGκ BP-HRP: sc-516102 or m-IgGκ BP-HRP (Cruz Marker): sc-516102-CM (dilution range: 1:1000-1:10000), Cruz Marker™ Molecular Weight Standards: sc-2035, UltraCruz® Blocking Reagent: sc-516214 and Western Blotting Luminol Reagent: sc-2048. 2) Immunoprecipitation: use Protein A/G PLUS-Agarose: sc-2003 (0.5 ml agarose/2.0 ml). 3) Immunofluorescence: use m-IgGκ BP-FITC: sc-516140 or m-IgGκ BP-PE: sc-516141 (dilution range: 1:50-1:200) with UltraCruz® Mounting Medium: sc-24941 or UltraCruz® Hard-set Mounting Medium: sc-359850. 4) Immunohistochemistry: use m-IgGκ BP-HRP: sc-516102 with DAB, 50X: sc-24982 and Immunohistomount: sc-45086, or Organo/Limonene Mount: sc-45087.

DATA



CD45 (158-4D3): sc-52386. Western blot analysis of CD45 expression in U-698-M (A), NAMALWA (B) and GA-10 (C) whole cell lysates. Detection reagent used: m-IgG_{2a} BP-HRP: sc-542731.



CD45 (158-4D3): sc-52386. Immunoperoxidase staining of formalin fixed, paraffin-embedded human lymph node tissue showing membrane and cytoplasmic staining of cells in germinal center and cytoplasmic staining of cells in non-germinal center (A). Immunoperoxidase staining of formalin fixed, paraffin-embedded human tonsil tissue showing membrane and cytoplasmic staining of cells in germinal center and cells in non-germinal center (B). Blocked with 0.25X UltraCruz® Blocking Reagent: sc-516214. Detected with m-IgG Fc BP-B: sc-533652 and ImmunoCruz® ABC Kit: sc-516216.



See **CD45 (35-Z6): sc-1178** for CD45 antibody conjugates, including AC, HRP, FITC, PE, and Alexa Fluor® 488, 546, 594, 647, 680 and 790.