

HCAM (KM201): sc-52536

BACKGROUND

Cell adhesion molecules (CAMs) are a family of closely related, cell surface glycoproteins that are involved in cell-cell interactions and are thought to play an important role in embryogenesis and development. HCAM, also known as CD44, LHR, MDU2, MDU3, MIC4, Pgp1, HCELL, MUTCH-I or ECMR-III, is a 742 amino acid single-pass type I membrane protein that is involved in hematopoiesis, lymphocyte activation and tumor metastasis. Functioning as a receptor for hyaluronic acid (HA) and interacting with ligands such as osteopontin (OPN), HCAM mediates both cell-cell and cell-matrix interactions, thereby playing an essential role in cell adhesion and cell migration. HCAM contains one Link domain and, due to alternative splicing events, is expressed as multiple isoforms, some of which are designated CD44R, CDw44, CD44S, CD44H (hematopoietic) and CD44E (epithelial). While most of the HCAM splice variants are expressed in tissues throughout the body, one specific isoform, namely CD44H, is expressed at high levels in cancer tissue, suggesting an important role for the CD44H splice variant in tumor progression.

REFERENCES

1. McVoy, L.A. and Kew, R.R. 2005. CD44 and annexin A2 mediate the C5a chemotactic cofactor function of the vitamin D binding protein. *J. Immunol.* 175: 4754-4760.
2. Hanley, W.D., Napier, S.L., Burdick, M.M., Schnaar, R.L., Sackstein, R. and Konstantopoulos, K. 2006. Variant isoforms of CD44 are P- and L-selectin ligands on colon carcinoma cells. *FASEB J.* 20: 337-339.
3. Zhuo, L., Kanamori, A., Kannagi, R., Itano, N., Wu, J., Hamaguchi, M., Ishiguro, N. and Kimata, K. 2006. SHAP potentiates the CD44-mediated leukocyte adhesion to the hyaluronan substratum. *J. Biol. Chem.* 281: 20303-20314.
4. Sugahara, K.N., Hirata, T., Hayasaka, H., Stern, R., Murai, T. and Miyasaka, M. 2006. Tumor cells enhance their own CD44 cleavage and motility by generating hyaluronan fragments. *J. Biol. Chem.* 281: 5861-5868.
5. Mielgo, A., Brondani, V., Landmann, L., Glaser-Ruhm, A., Erb, P., Stupack, D. and Günther, U. 2007. The CD44 standard/ezrin complex regulates Fas-mediated apoptosis in Jurkat cells. *Apoptosis* 12: 2051-2061.
6. Singleton, P.A., Salgia, R., Moreno-Vinasco, L., Moitra, J., Sammani, S., Mirzapoiazova, T. and Garcia, J.G. 2007. CD44 regulates hepatocyte growth factor-mediated vascular integrity. Role of c-Met, Tiam1/Rac1, dynamin 2, and cortactin. *J. Biol. Chem.* 282: 30643-30657.

CHROMOSOMAL LOCATION

Genetic locus: Cd44 (mouse) mapping to 2 E2.

SOURCE

HCAM (KM201) is a rat monoclonal antibody raised against spleen cells from LOU/MN rats with the bone marrow-derived stromal clone, BMS2.

STORAGE

Store at 4° C, **DO NOT FREEZE**. Stable for one year from the date of shipment. Non-hazardous. No MSDS required.

PRODUCT

Each vial contains 100 µg IgG₁ in 1.0 ml of PBS with < 0.1% sodium azide and 0.1% gelatin.

HCAM (KM201) is available conjugated either phycoerythrin (sc-52536 PE, 100 tests in 2 ml) or fluorescein (sc-52536 FITC, 100 tests in 2 ml), for IF, IHC(P) and FCM.

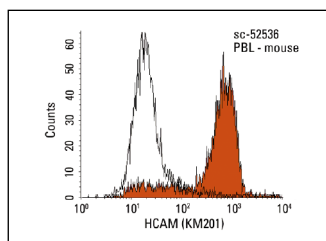
APPLICATIONS

HCAM (KM201) is recommended for detection of HCAM of mouse origin by Western Blotting (starting dilution 1:200, dilution range 1:100-1:1000), immunoprecipitation [1-2 µg per 100-500 µg of total protein (1 ml of cell lysate)] and flow cytometry (1 µg per 1 x 10⁶ cells).

Suitable for use as control antibody for HCAM siRNA (m): sc-35534, HCAM shRNA Plasmid (m): sc-35534-SH and HCAM shRNA (m) Lentiviral Particles: sc-35534-V.

Molecular Weight of HCAM: 90-95 kDa.

DATA



HCAM (KM201): sc-52536. Indirect FCM analysis of mouse peripheral blood leukocytes stained with HCAM (KM201), followed by PE-conjugated goat anti-mouse IgG: sc-3738. Black line histogram represents the isotype control, normal rat IgG₁: sc-3882.

RESEARCH USE

For research use only, not for use in diagnostic procedures.

PROTOCOLS

See our web site at www.scbt.com for detailed protocols and support products.



See **HCAM (DF1485): sc-7297** for additional antibody conjugates, including AC, HRP, FITC, PE, Alexa Fluor[®] 488 and Alexa Fluor[®] 647.