

# SNX6 (K-18): sc-5260

## BACKGROUND

Two related proteins, TRAF1 and TRAF2 (TNF receptor-associated factors 1 and 2, respectively), form a heterodimeric complex that associates with the cytoplasmic domain of the tumor necrosis factor (TNF) receptor type 2. A third member of this family, TRAF3 (also designated CD40bp or CRAF1) associates with the cytoplasmic domain of CD40. Additional members of the TRAF/CRAF family of signaling intermediates include TRAF4 (also designated CART1), TRAF5 and TRAF6. TRAF4 associated factor 2 (TRAF4-AF2), also designated sorting nexin 6 (SNX6), is a member of the sorting nexin family of molecules, which are widely expressed and associate with various receptor.

## REFERENCES

1. Rothe, M., Wong, S.C., Henzel, W.J. and Goeddel, D.V. 1994. A novel family of putative signal transducers associated with the cytoplasmic domain of the 75 kDa tumor necrosis factor receptor. *Cell* 78: 681-692.
2. Cheng, G., Cleary, A.M., Ye, Z.S., Hong, D.I., Lederman, S. and Baltimore, D. 1995. Involvement of CRAF1, a relative of TRAF, in CD40 signaling. *Science* 267: 1494-1498.
3. Tomasetto, C., Regnier, C., Moog-Lutz, C., Mattei, M.G., Chenard, M.P., Lidereau, R., Basset, P. and Rio, M.C. 1995. Identification of four novel human genes amplified and overexpressed in breast carcinoma and localized to the q11-q21.3 region of chromosome 17. *Genomics* 28: 367-376.
4. Cao, Z., Xiong, J., Takeuchi, M., Kurama, T. and Goeddel, D.V. 1996. TRAF6 is a signal transducer for interleukin-1. *Nature* 383: 443-446.
5. Mizushima, S., Fujita, M., Ishida, T., Azuma, S., Kato, K., Hirai, M., Otsuka, M., Yamamoto, T. and Inoue, J. 1998. Cloning and characterization of a cDNA encoding the human homolog of tumor necrosis factor receptor-associated factor 5 (TRAF5). *Gene* 207: 135-140.

## CHROMOSOMAL LOCATION

Genetic locus: SNX6 (human) mapping to 14q13.1; Snx6 (mouse) mapping to 12 C1.

## SOURCE

SNX6 (K-18) is an affinity purified goat polyclonal antibody raised against a peptide mapping at the C-terminus of SNX6 of human origin.

## PRODUCT

Each vial contains 200 µg IgG in 1.0 ml of PBS with < 0.1% sodium azide and 0.1% gelatin.

Blocking peptide available for competition studies, sc-5260 P, (100 µg peptide in 0.5 ml PBS containing < 0.1% sodium azide and 0.2% BSA).

## STORAGE

Store at 4° C, **\*\*DO NOT FREEZE\*\***. Stable for one year from the date of shipment. Non-hazardous. No MSDS required.

## RESEARCH USE

For research use only, not for use in diagnostic procedures.

## APPLICATIONS

SNX6 (K-18) is recommended for detection of SNX6 of mouse, rat and human origin by Western Blotting (starting dilution 1:200, dilution range 1:100-1:1000), immunofluorescence (starting dilution 1:50, dilution range 1:50-1:500) and solid phase ELISA (starting dilution 1:30, dilution range 1:30-1:3000).

SNX6 (K-18) is also recommended for detection of SNX6 in additional species, including equine, canine, bovine, porcine and avian.

Suitable for use as control antibody for SNX6 siRNA (h): sc-41357, SNX6 siRNA (m): sc-41358, SNX6 shRNA Plasmid (h): sc-41357-SH, SNX6 shRNA Plasmid (m): sc-41358-SH, SNX6 shRNA (h) Lentiviral Particles: sc-41357-V and SNX6 shRNA (m) Lentiviral Particles: sc-41358-V.

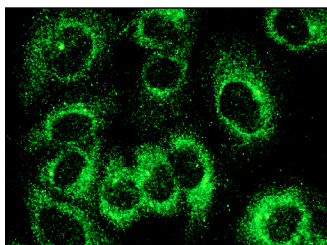
Molecular Weight of SNX6: 47 kDa.

Positive Controls: LADMAC whole cell lysate: sc-364189, Hep G2 cell lysate: sc-2227 or A549 cell lysate: sc-2413.

## RECOMMENDED SECONDARY REAGENTS

To ensure optimal results, the following support (secondary) reagents are recommended: 1) Western Blotting: use donkey anti-goat IgG-HRP: sc-2020 (dilution range: 1:2000-1:100,000) or Cruz Marker™ compatible donkey anti-goat IgG-HRP: sc-2033 (dilution range: 1:2000-1:5000), Cruz Marker™ Molecular Weight Standards: sc-2035, TBS Blotto A Blocking Reagent: sc-2333 and Western Blotting Luminol Reagent: sc-2048. 2) Immunofluorescence: use donkey anti-goat IgG-FITC: sc-2024 (dilution range: 1:100-1:400) or donkey anti-goat IgG-TR: sc-2783 (dilution range: 1:100-1:400) with UltraCruz™ Mounting Medium: sc-24941.

## DATA



SNX6 (K-18): sc-5260. Immunofluorescence staining of methanol-fixed A549 cells showing cytoplasmic localization.

## SELECT PRODUCT CITATIONS

1. Rivera, J., Megías, D. and Bravo, J. 2010. Sorting nexin 6 interacts with breast cancer metastasis suppressor-1 and promotes transcriptional repression. *J. Cell. Biochem.* 111: 1464-1472.

**MONOS**  
Satisfaction  
Guaranteed

Try **SNX6 (D-5): sc-365965** or **SNX6 (D-1): sc-365795**, our highly recommended monoclonal alternatives to SNX6 (K-18).