

# Endophilin B1 (30A882): sc-52924

## BACKGROUND

The endophilins comprise a family of three SH3 domain-containing proteins designated Endophilin I, II and III, or alternatively known as SH3P4, SH3P8 and SH3P13, respectively. These proteins associate with Amphiphysin, Synaptojanin and Dynamin and are implicated in presynaptic vesicle trafficking at nerve terminals. The expression patterns of the endophilins are consistent with their cellular functions at the neuronal synapse, as Endophilin I is expressed only in the brain. Endophilin B1 is required for maintenance of mitochondrial morphology and for the regulation of the outer mitochondrial membrane dynamics. The N-terminal domain of Endophilin B1 shares highest similarity with the lipid-binding and -modifying (LBM) domain of class A endophilins.

## REFERENCES

- Pierrat, B., Simonen, M., Cueto, M., Mestan, J., Ferrigno, P. and Heim, J. 2001. SH3GLB, a new Endophilin-related protein family featuring an SH3 domain. *Genomics* 71: 222-234.
- Modregger, J., Schmidt, A.A., Ritter, B., Huttner, W.B. and Plomann, M. 2003. Characterization of Endophilin B1b, a brain-specific membrane-associated lysophosphatidic acid acyl transferase with properties distinct from Endophilin A1. *J. Biol. Chem.* 278: 4160-4167.
- Wang, M.Q., Kim, W., Gao, G., Torrey, T.A., Morse, H.C., 3rd, De Camilli, P. and Goff, S.P. 2003. Endophilins interact with Moloney murine leukemia virus Gag and modulate virion production. *J. Biol.* 3: 4.
- Karbowski, M., Jeong, S.Y. and Youle, R.J. 2004. Endophilin B1 is required for the maintenance of mitochondrial morphology. *J. Cell Biol.* 166: 1027-1039.
- Takahashi, Y., Karbowski, M., Yamaguchi, H., Kazi, A., Wu, J., Sebt, S.M., Youle, R.J. and Wang, H.G. 2005. Loss of Bif-1 suppresses Bax/Bak conformational change and mitochondrial apoptosis. *Mol. Cell. Biol.* 25: 9369-9382.
- Aramaki, Y., Ogawa, K., Toh, Y., Ito, T., Akimitsu, N., Hamamoto, H., Sekimizu, K., Matsusue, K., Kono, A., Iguchi, H. and Takiguchi, S. 2005. Direct interaction between metastasis-associated protein 1 and Endophilin 3. *FEBS Lett.* 579: 3731-3736.

## CHROMOSOMAL LOCATION

Genetic locus: SH3GLB1 (human) mapping to 1p22.3; Sh3glb1 (mouse) mapping to 3 H2.

## SOURCE

Endophilin B1 (30A882) is a mouse monoclonal antibody raised against full length Endophilin B1 of human origin.

## PRODUCT

Each vial contains 100 µg IgG<sub>1</sub> in 1.0 ml of PBS with < 0.1% sodium azide and 0.1% gelatin.

## APPLICATIONS

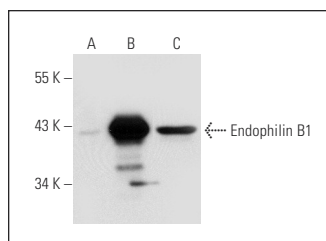
Endophilin B1 (30A882) is recommended for detection of Endophilin B1 of mouse, rat and human origin by Western Blotting (starting dilution 1:200, dilution range 1:100-1:1000), immunoprecipitation [1-2 µg per 100-500 µg of total protein (1 ml of cell lysate)] and solid phase ELISA (starting dilution 1:30, dilution range 1:30-1:3000).

Suitable for use as control antibody for Endophilin B1 siRNA (h): sc-63282, Endophilin B1 siRNA (m): sc-63283, Endophilin B1 shRNA Plasmid (h): sc-63282-SH, Endophilin B1 shRNA Plasmid (m): sc-63283-SH, Endophilin B1 shRNA (h) Lentiviral Particles: sc-63282-V and Endophilin B1 shRNA (m) Lentiviral Particles: sc-63283-V.

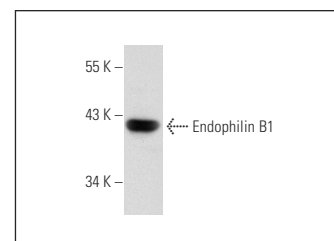
Molecular Weight of Endophilin B1: 40 kDa.

Positive Controls: Endophilin B1 (m): 293T Lysate: sc-120038, HeLa whole cell lysate: sc-2200 or Hep G2 cell lysate: sc-2227.

## DATA



Endophilin B1 (30A882): sc-52924. Western blot analysis of Endophilin B1 expression in non-transfected 293T: sc-117752 (A), mouse Endophilin B1 transfected 293T: sc-120038 (B) and NIH/3T3 (C) whole cell lysates.



Endophilin B1 (30A882): sc-52924. Western blot analysis of Endophilin B1 expression in HeLa whole cell lysate.

## STORAGE

Store at 4° C, **\*\*DO NOT FREEZE\*\***. Stable for one year from the date of shipment. Non-hazardous. No MSDS required.

## RESEARCH USE

For research use only, not for use in diagnostic procedures.

## PROTOCOLS

See our web site at [www.scbt.com](http://www.scbt.com) for detailed protocols and support products.