

CD22 (OX96): sc-53031

BACKGROUND

The B lymphocyte specific CD22 antigen, also designated B-lymphocyte cell adhesion molecule (BLCAM), sialic acid-binding Ig-like lectin 2 (Siglec-2) and Leu-14, is a type I integral membrane glycoprotein, structurally similar to other cell adhesion molecules (CAMs), which acts as a regulator of B cell signaling. CD22 is expressed as both a cytoplasmic and membrane protein during discrete stages of B cell lymphocyte differentiation. The cytoplasmic form of CD22, expressed early in B cell development, is a useful marker for acute lymphocytic leukemia. The membrane form of CD22 is expressed in mature B cells prior to their differentiation into plasma cells. Alternative splicing results in two different isoforms, CD22 α and CD22 β . The CD22 β monomer is the principally occurring isoform but CD22 also appears as a heterodimer of CD22 β and the shorter isoform, CD22 α .

REFERENCES

1. Stamenkovic, I. and Seed, B. 1990. The B cell antigen CD22 mediates monocyte and erythrocyte adhesion. *Nature* 345: 74-77.
2. Wilson, G.L., Fox, C.H., Fauci, A.S. and Kehrl, J.H. 1991. cDNA cloning of the B cell membrane protein CD22: a mediator of B-B cell interactions. *J. Exp. Med.* 173: 137-146.
3. Powell, L.D., Sgroi, D., Sjöberg, E.R., Stamenkovic, I. and Varki, A. 1993. Natural ligands of the B cell adhesion molecule CD22 β carry N-linked oligosaccharides with α -2,6-linked sialic acids that are required for recognition. *J. Biol. Chem.* 268: 7019-7027.
4. Wilson, G.L., Najfeld, V., Kozlow, E., Menniger, J., Ward, D. and Kehrl, J.H. 1993. Genomic structure and chromosomal mapping of the human CD22 gene. *J. Immunol.* 150: 5013-5024.
5. Sgroi, D., Koretzky, G.A. and Stamenkovic, I. 1995. Regulation of CD45 engagement by the B cell receptor CD22. *Proc. Natl. Acad. Sci. USA* 92: 4026-4030.
6. Tedder, T.F., Tuscano, J., Sato, S. and Kehrl, J.H. 1997. CD22, a B lymphocyte-specific adhesion molecule that regulates antigen receptor signaling. *Annu. Rev. Immunol.* 15: 481-504.
7. Wakabayashi, C., Adachi, T., Wienands, J. and Tsubata, T. 2002. A distinct signaling pathway used by the IgG-containing B cell antigen receptor. *Science* 298: 2392-2395.
8. John, B., Herrin, B.R., Raman, C., Wang, Y.N., Bobbitt, K.R., Brody, B.A. and Justement, L.B. 2003. The B cell co-receptor CD22 associates with AP50, a Clathrin-coated pit adapter protein, via tyrosine-dependent interaction. *J. Immunol.* 170: 3534-3543.

CHROMOSOMAL LOCATION

Genetic locus: Cd22 (mouse) mapping to 7 B1.

SOURCE

CD22 (OX96) is a rat monoclonal antibody raised against CD22 of mouse origin.

PRODUCT

Each vial contains 200 μ g IgG₁ in 1.0 ml of PBS with < 0.1% sodium azide and 0.1% gelatin.

CD22 (OX96) is available conjugated to either phycoerythrin (sc-53031 PE) or fluorescein (sc-53031 FITC), 200 μ g/ml, for IF, IHC(P) and FCM.

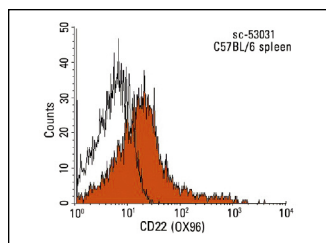
APPLICATIONS

CD22 (OX96) is recommended for detection of CD22 of mouse origin by flow cytometry (1 μ g per 1 x 10⁶ cells).

Suitable for use as control antibody for CD22 siRNA (m): sc-29806, CD22 shRNA Plasmid (m): sc-29806-SH and CD22 shRNA (m) Lentiviral Particles: sc-29806-V.

Molecular Weight of CD22: 130 kDa.

DATA



CD22 (OX96): sc-53031. Indirect FCM analysis of C57BL/6 splenocytes stained with CD22 (OX96), followed by PE-conjugated goat anti-rat IgG: sc-3740. Black line histogram represents the isotype control, normal rat IgG₁: sc-3882.

STORAGE

Store at 4° C, ****DO NOT FREEZE****. Stable for one year from the date of shipment. Non-hazardous. No MSDS required.

RESEARCH USE

For research use only, not for use in diagnostic procedures.

PROTOCOLS

See our web site at www.scbt.com for detailed protocols and support products.