

SIRP- γ (OX117): sc-53112

BACKGROUND

SIRPs (signal-regulatory proteins) are a family of transmembrane glycoproteins that were identified by their association with the Src homology 2 domain-containing protein-tyrosine phosphatase SHP-2 in response to Insulin. The SIRP family negatively regulates the PI 3-kinase pathway, which may diminish EGFR-mediated motility and survival phenotypes that contribute to transformation of certain cell types. SIRP- α 1 is a transmembrane protein which contains an extracellular portion with three immunoglobulin-like structures and a cytoplasmic region with four potential tyrosine phosphorylation sites. SIRP- α 1 is a substrate for activated receptor tyrosine kinases. In its tyrosine phosphorylated form, SIRP- α 1 binds to SH-PTP2 through SH2 interactions and acts as an SH-PTP2 substrate. SIRP- α 1 has been shown to have negative regulatory effects on cellular responses induced by growth factors, oncogenes and Insulin. SIRP- β 1 shares extensive sequence homology with SIRP- α 1 in its extracellular portion but lacks the cytoplasmic portion. SIRP- γ , originally designated SIRP- β 2 (SIRP-B2, CD172g) has unique characteristics from both the α and β versions. SIRP- γ is expressed on the majority of T cells and a proportion of B cells. CD47 associates with SIRP- γ , and this interaction signals unidirectionally only.

REFERENCES

1. Yamauchi, K., et al. 1995. Identification of the major SHPTP2-binding protein that is tyrosine-phosphorylated in response to Insulin. *J. Biol. Chem.* 270: 17716-17722.
2. Fujioka, Y., et al. 1996. A novel membrane glycoprotein, SHPS-1, that binds the SH2-domain-containing tyrosine phosphatase SHP-2 in response to mitogens and cell adhesion. *Mol. Cell. Biol.* 16: 6887-6899.
3. Kharitonov, A., et al. 1997. A family of proteins that inhibit signalling through tyrosine kinase receptors. *Nature* 386: 181-186.

CHROMOSOMAL LOCATION

Genetic locus: SIRPG/SIRPB1 (human) mapping to 20p13; Sirpb1a (mouse) mapping to 3 A1.

SOURCE

SIRP- γ (OX117) is a mouse monoclonal antibody raised against recombinant SIRP- γ of human origin.

PRODUCT

Each vial contains 200 μ g IgG γ kappa light chain in 1.0 ml of PBS with < 0.1% sodium azide and 0.1% gelatin.

STORAGE

Store at 4° C, **DO NOT FREEZE**. Stable for one year from the date of shipment. Non-hazardous. No MSDS required.

PROTOCOLS

See our web site at www.scbt.com for detailed protocols and support products.

APPLICATIONS

SIRP- γ (OX117) is recommended for detection of SIRP- γ and SIRP- β of mouse, rat and human origin by Western Blotting (starting dilution 1:200, dilution range 1:100-1:1000), immunoprecipitation [1-2 μ g per 100-500 μ g of total protein (1 ml of cell lysate)] and flow cytometry (1 μ g per 1 x 10⁶ cells).

Suitable for use as control antibody for SIRP- α / β 1/ γ siRNA (h): sc-36492, SIRP- γ siRNA (m): sc-76501, SIRP- α / β 1/ γ shRNA Plasmid (h): sc-36492-SH, SIRP- α / β 1/ γ shRNA (h) Lentiviral Particles: sc-36492-V and SIRP- γ shRNA (m) Lentiviral Particles: sc-76501-V.

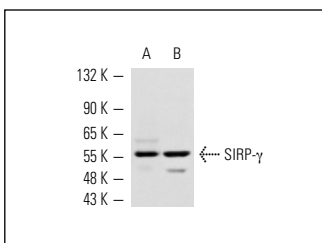
Molecular Weight of SIRP- γ : 55 kDa.

Positive Controls: HEK293T whole cell lysate: sc-45137, AML-193 whole cell lysate: sc-364182 or Jurkat whole cell lysate: sc-2204.

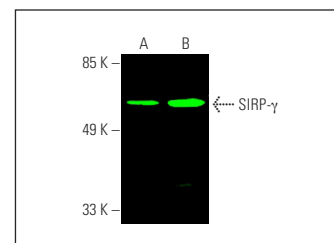
RECOMMENDED SUPPORT REAGENTS

To ensure optimal results, the following support reagents are recommended: 1) Western Blotting: use m-IgG κ BP-HRP: sc-516102 or m-IgG κ BP-HRP (Cruz Marker): sc-516102-CM (dilution range: 1:1000-1:10000), Cruz Marker[™] Molecular Weight Standards: sc-2035, UltraCruz[®] Blocking Reagent: sc-516214 and Western Blotting Luminol Reagent: sc-2048. 2) Immunoprecipitation: use Protein A/G PLUS-Agarose: sc-2003 (0.5 ml agarose/2.0 ml).

DATA



SIRP- γ (OX117): sc-53112. Western blot analysis of SIRP- γ expression in AML-193 (A) and Jurkat (B) whole cell lysates.



SIRP- γ (OX117): sc-53112. Near-infrared western blot analysis of SIRP- γ expression in Jurkat (A) and HEK293T (B) whole cell lysates. Blocked with UltraCruz[®] Blocking Reagent: sc-516214. Detection reagent used: m-IgG κ BP-CFL 680: sc-516180.

RESEARCH USE

For research use only, not for use in diagnostic procedures.