

# Thy-1 (NIMR-1): sc-53129

## BACKGROUND

Over 100 cell surface markers have been identified through the use of monoclonal antibodies. Many of these markers have proven useful in identifying specific subpopulations of cells within mixed colonies. Accordingly, these molecules have been assigned a "cluster of differentiation" (CD) designation. One such marker, designated Thy-1 (also referred to as CDw90), is a phosphatidyl-anchored cell surface glycoprotein which when coexpressed with CD34 on cells from normal human bone marrow, identifies a subpopulation that includes putative hematopoietic, pluripotent stem cells. Thy-1<sup>+</sup> cells from bone marrow have been implicated in syngeneic graft versus host disease and may serve to regulate autoreactivity after bone marrow transplant.

## REFERENCES

- Mason, D. and Williams, A. 1980. The kinetics of antibody binding to membrane antigens in solution and at the cell surface. *Biochem. J.* 187: 1-20.
- Barry, T.S., Jones, D.M., Richter, C.B. and Haynes, B.F. 1991. Successful engraftment of human postnatal thymus in severe combined immune deficient (SCID) mice: differential engraftment of thymic components with irradiation versus anti-asialo GM-1 immunosuppressive regimens. *J. Exp. Med.* 173: 167-180.
- Holter, W., Stockinger, H., Majdic, O. and Knapp, W. 1991. Phenotypical and functional characterization of leukocytes — the CD-system. *Wien. Klin. Wochenschr.* 103: 247-262.
- Bryson, J.S., Jennings, C.D., Caywood, B.E. and Kaplan, A.M. 1993. Thy-1<sup>+</sup> bone marrow cells regulate the induction of murine syngeneic graft-versus-host disease. *Transplantation* 56: 941-945.
- Kim, Y.B., Zhang, J., Davis, W.C. and Lunney, J.K. 1994. CD11/CD18 panel report for swine CD workshop. *Vet. Immunol. Immunopathol.* 43: 289-291.
- Firer, M.A., Zacharia, B., Kostikov, M. and Irlin, Y. 1995. The Thy-1 molecule: its properties and functions. *Israel J. Med. Sci.* 31: 382-386.
- Holden, J.T., Geller, R.B., Farhi, D.C., Holland, H.K., Stempora, L.L., Phillips, C.N. and Bray, R.A. 1995. Characterization of Thy-1 (CDw90) expression in CD34<sup>+</sup> acute leukemia. *Blood* 86: 60-65.

## CHROMOSOMAL LOCATION

Genetic locus: Thy1 (mouse) mapping to 9 A5.1.

## SOURCE

Thy-1 (NIMR-1) is a rat monoclonal antibody raised against SBA spleen cell plasma membranes of mouse origin.

## STORAGE

Store at 4° C, **\*\*DO NOT FREEZE\*\***. Stable for one year from the date of shipment. Non-hazardous. No MSDS required.

## PROTOCOLS

See our web site at [www.scbt.com](http://www.scbt.com) or our catalog for detailed protocols and support products.

## PRODUCT

Each vial contains 200 µg IgM in 1.0 ml of PBS with < 0.1% sodium azide and 0.1% gelatin.

Thy-1 (NIMR-1) is available conjugated to either phycoerythrin (sc-53129 PE) or fluorescein (sc-53129 FITC), 200 µg/ml, for IF, IHC(P) and FCM.

## APPLICATIONS

Thy-1 (NIMR-1) is recommended for detection of Thy-1 of mouse origin by Western Blotting (starting dilution 1:200, dilution range 1:100-1:1000), immunoprecipitation [1-2 µg per 100-500 µg of total protein (1 ml of cell lysate)], immunofluorescence (starting dilution 1:50, dilution range 1:50-1:500) and flow cytometry (1 µg per 1 x 10<sup>6</sup> cells).

Suitable for use as control antibody for Thy-1 siRNA (m): sc-36667, Thy-1 shRNA Plasmid (m): sc-36667-SH and Thy-1 shRNA (m) Lentiviral Particles: sc-36667-V.

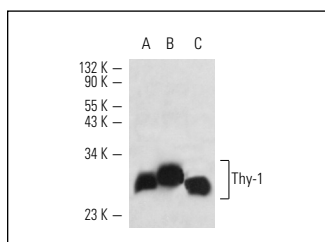
Molecular Weight of Thy-1: 25-37 kDa.

Positive Controls: CTLL-2 cell lysate: sc-2242, mouse brain extract: sc-2253 or BW5147 cell lysate: sc-3800.

## RECOMMENDED SECONDARY REAGENTS

To ensure optimal results, the following support (secondary) reagents are recommended: 1) Immunoprecipitation: use Protein L-Agarose: sc-2336 (0.5 ml agarose/2.0 ml).

## DATA



Thy-1 (NIMR-1): sc-53129. Western blot analysis of Thy-1 expression in BW5147 (A) and CTLL-2 (B) whole cell lysates and mouse brain tissue extract (C).

## RESEARCH USE

For research use only, not for use in diagnostic procedures.



See **Thy-1 (aThy-1A1): sc-53456** for Thy-1 antibody conjugates, including AC, HRP, FITC, PE, Alexa Fluor<sup>®</sup> 488 and Alexa Fluor<sup>®</sup> 647.