

CD45 (351C5): sc-53201



The Power to Question

BACKGROUND

CD45 has been identified as a transmembrane glycoprotein, broadly expressed among hematopoietic cells. Multiple isoforms of CD45 are distributed throughout the immune system according to cell type. These isoforms arise because of alternative splicing of exons 4, 5 and 6. The corresponding protein domains are characterized by the binding of monoclonal antibodies specific for CD45RA (exon 4), CD45RB (exon 5), CD45RC (exon 6) and CD45RO (exons 4 to 6 spliced out). The variation in these isoforms is localized to the extracellular domain of CD45, while the intracellular domain is conserved. CD45 functions as a phosphotyrosine phosphatase, a vital component for efficient tyrosine phosphorylation induction by the TCR/CD3 complex. The tyrosine phosphatase activity of CD45 is contained within the conserved intracellular domain. Src and Syk family protein tyrosine kinases are utilized by the TCR/CD3 complex to initiate signaling cascades. Several members of these two families, including Lck, Fyn and ZAP-70, have been implicated as physiological substrates of CD45.

REFERENCES

1. Trowbridge, I.S. 1978. Interspecies spleen-myeloma hybrid producing monoclonal antibodies against mouse lymphocyte surface glycoprotein, T200. *J. Exp. Med.* 148: 313-323.
2. West, K.P., et al. 1986. The demonstration of B cell, T cell and myeloid antigens in paraffin sections. *J. Pathol.* 150: 89-101.
3. Streuli, M., et al. 1987. Differential usage of three exons generates at least five different mRNAs encoding human leukocyte common antigens. *J. Exp. Med.* 166: 1548-1566.
4. Hall, P.A., et al. 1987. New marker of B lymphocytes, MB2: comparison with other lymphocyte subset markers active in conventionally processed tissue sections. *J. Clin. Pathol.* 40: 151-156.
5. Poppema, S., et al. 1987. Monoclonal antibodies (MT1, MT2, MB1, MB2, MB3) reactive with leukocyte subsets in paraffin-embedded tissue sections. *Am. J. Pathol.* 127: 418-429.

CHROMOSOMAL LOCATION

Genetic locus: PTPRC (human) mapping to 1q31.3.

SOURCE

CD45 (351C5) is a mouse monoclonal antibody raised against Raji cells of human origin.

PRODUCT

Each vial contains 200 µg IgM kappa light chain in 1.0 ml of PBS with < 0.1% sodium azide and 0.1% gelatin.

CD45 (351C5) is available conjugated to either phycoerythrin (sc-53201 PE) or fluorescein (sc-53201 FITC), 200 µg/ml, for IF, IHC(P) and FCM.

STORAGE

Store at 4° C, **DO NOT FREEZE**. Stable for one year from the date of shipment. Non-hazardous. No MSDS required.

APPLICATIONS

CD45 (351C5) is recommended for detection of CD45 of human origin by Western Blotting (starting dilution 1:200, dilution range 1:100-1:1000), immunoprecipitation [1-2 µg per 100-500 µg of total protein (1 ml of cell lysate)], immunofluorescence (starting dilution 1:50, dilution range 1:50-1:500), immunohistochemistry (including paraffin-embedded sections) (starting dilution 1:50, dilution range 1:50-1:500) and flow cytometry (1 µg per 1 x 10⁶ cells).

Suitable for use as control antibody for CD45 siRNA (h): sc-29251, CD45 shRNA Plasmid (h): sc-29251-SH and CD45 shRNA (h) Lentiviral Particles: sc-29251-V.

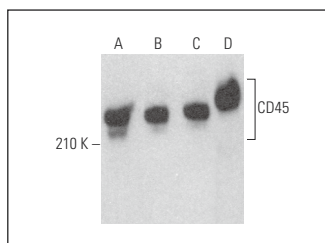
Molecular Weight of CD45: 180-220 kDa.

Positive Controls: Ramos cell lysate: sc-2216, BJAB whole cell lysate: sc-2207 or CCRF-CEM cell lysate: sc-2225.

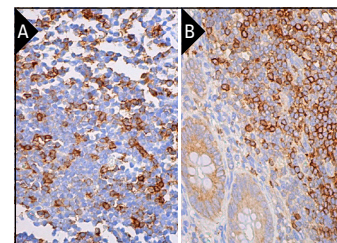
RECOMMENDED SUPPORT REAGENTS

To ensure optimal results, the following support reagents are recommended: 1) Western Blotting: use m-IgGκ BP-HRP: sc-516102 or m-IgGκ BP-HRP (Cruz Marker): sc-516102-CM (dilution range: 1:1000-1:10000), Cruz Marker™ Molecular Weight Standards: sc-2035, UltraCruz® Blocking Reagent: sc-516214 and Western Blotting Luminol Reagent: sc-2048. 2) Immunoprecipitation: use Protein L-Agarose: sc-2336 (0.5 ml agarose/2.0 ml). 3) Immunofluorescence: use m-IgGκ BP-FITC: sc-516140 or m-IgGκ BP-PE: sc-516141 (dilution range: 1:50-1:200) with UltraCruz® Mounting Medium: sc-24941 or UltraCruz® Hard-set Mounting Medium: sc-359850. 4) Immunohistochemistry: use m-IgGκ BP-HRP: sc-516102 with DAB, 50X: sc-24982 and Immunohisto-mount: sc-45086, or Organo/Limonene Mount: sc-45087.

DATA



CD45 (351C5): sc-53201. Western blot analysis of CD45 expression in BJAB (A), Ramos (B), CCRF-CEM (C) and GA-10 (D) whole cell lysates.



CD45 (351C5): sc-53201. Immunoperoxidase staining of formalin fixed, paraffin-embedded human lymph node tissue showing membrane and cytoplasmic staining of subset of cells in non-germinal center (A). Immunoperoxidase staining of formalin fixed, paraffin-embedded human appendix tissue showing membrane and cytoplasmic staining of lymphoid cells (B).

RESEARCH USE

For research use only, not for use in diagnostic procedures.



See **CD45 (35-Z6): sc-1178** for CD45 antibody conjugates, including AC, HRP, FITC, PE, and Alexa Fluor® 488, 546, 594, 647, 680 and 790.