

# CUL-5 (I-19): sc-5325

## BACKGROUND

Cullin proteins comprise a distinct family of mediators that participate in the selective targeting of proteins for ubiquitin (Ub)-mediated proteolysis. CUL-1, which is the mammalian homolog of Cdc53 from yeast, is an integral component of the E3 ubiquitin ligase complex designated SCF. The SCF (Skp1/CUL-1/F-box protein complex) consists of Skp1 associating with both CUL-1 and an F-box protein, such as Skp2, which determines the substrate specificity of the complex. CUL-1 mediated ubiquitination results in the degradation of cell cycle proteins cyclin D, p21 and cyclin E. Another cullin, CUL-3 facilitates the degradation of cyclin E independent of SCF activity, while CUL-2 associates with the tumor suppressing protein VHL and elongin B to form VBC complexes, which structurally resemble the SCF ligase. Proteolysis also occurs by way of CUL-4 associating with Nedd-8, a ubiquitin-like protein, where it too functions as an active component of a multifunctional E3 complex. CUL-5, or vaso-pressin-activated, calcium-mobilizing protein (VACM-1), is also included in the cullin family as it shares substantial sequence homology with CUL-1.

## REFERENCES

1. Kipreos, E.T., et al. 1996. CUL-1 is required for cell cycle exit in *C. elegans* and identifies a novel gene family. *Cell* 85: 829-839.
2. Byrd, P.J., et al. 1997. Identification and analysis of expression of human VACM-1, a cullin gene family member located on chromosome 11q22-23. *Genome Res.* 7: 71-75.
3. Yu, Z.K., et al. 1998. Human CUL-1 associates with the Skp1/Skp2 complex and regulates p21<sup>CIP1/WAF1</sup> and cyclin D proteins. *Proc. Natl. Acad. Sci. USA* 95: 11324-11329.
4. Chen, L.C., et al. 1998. The human homologue for the *Caenorhabditis elegans* CUL-4 gene is amplified and overexpressed in primary breast cancers. *Cancer Res.* 58: 3677-3683.
5. Tyers, M., et al. 1999. One ring to rule a superfamily of E3 ubiquitin ligases. *Science* 284: 601, 603-604.

## CHROMOSOMAL LOCATION

Genetic locus: CUL5 (human) mapping to 11q22.3; Cul5 (mouse) mapping to 9 A5.3.

## SOURCE

CUL-5 (I-19) is an affinity purified goat polyclonal antibody raised against a peptide mapping near the C-terminus of CUL-5 of human origin.

## PRODUCT

Each vial contains 200 µg IgG in 1.0 ml of PBS with < 0.1% sodium azide and 0.1% gelatin.

Blocking peptide available for competition studies, sc-5325 P, (100 µg peptide in 0.5 ml PBS containing < 0.1% sodium azide and 0.2% BSA).

## STORAGE

Store at 4° C, \*\*DO NOT FREEZE\*\*. Stable for one year from the date of shipment. Non-hazardous. No MSDS required.

## APPLICATIONS

CUL-5 (I-19) is recommended for detection of CUL-5 of mouse, rat and human origin by Western Blotting (starting dilution 1:200, dilution range 1:100-1:1000), immunofluorescence (starting dilution 1:50, dilution range 1:50-1:500), immunohistochemistry (including paraffin-embedded sections) (starting dilution 1:50, dilution range 1:50-1:500) and solid phase ELISA (starting dilution 1:30, dilution range 1:30-1:3000).

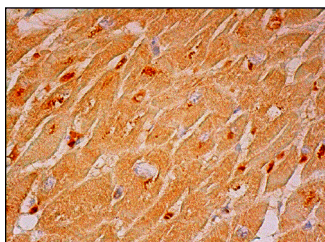
CUL-5 (I-19) is also recommended for detection of CUL-5 in additional species, including equine, canine, bovine, porcine and avian.

Suitable for use as control antibody for CUL-5 siRNA (h): sc-37574, CUL-5 siRNA (m): sc-37575, CUL-5 shRNA Plasmid (h): sc-37574-SH, CUL-5 shRNA Plasmid (m): sc-37575-SH, CUL-5 shRNA (h) Lentiviral Particles: sc-37574-V and CUL-5 shRNA (m) Lentiviral Particles: sc-37575-V.

## RECOMMENDED SECONDARY REAGENTS

To ensure optimal results, the following support (secondary) reagents are recommended: 1) Western Blotting: use donkey anti-goat IgG-HRP: sc-2020 (dilution range: 1:2000-1:100,000) or Cruz Marker™ compatible donkey anti-goat IgG-HRP: sc-2033 (dilution range: 1:2000-1:5000), Cruz Marker™ Molecular Weight Standards: sc-2035, TBS Blotto A Blocking Reagent: sc-2333 and Western Blotting Luminol Reagent: sc-2048. 2) Immunofluorescence: use donkey anti-goat IgG-FITC: sc-2024 (dilution range: 1:100-1:400) or donkey anti-goat IgG-TR: sc-2783 (dilution range: 1:100-1:400) with UltraCruz™ Mounting Medium: sc-24941. 3) Immunohistochemistry: use ImmunoCruz™: sc-2053 or ABC: sc-2023 goat IgG Staining Systems.

## DATA



CUL-5 (I-19): sc-5325. Immunoperoxidase staining of formalin fixed, paraffin-embedded human heart muscle tissue showing cytoplasmic staining of myocytes.

## RESEARCH USE

For research use only, not for use in diagnostic procedures.

**MONOS**  
Satisfaction  
Guaranteed

Try **CUL-5 (F-6): sc-373822**, our highly recommended monoclonal alternative to CUL-5 (I-19).