

Proliferation Marker (JC1): sc-53424

BACKGROUND

Various hormones are secreted from the anterior pituitary during development and growth, including prolactin, lutropin (LH), proliferin (Mrp1 or Plf1), thyroid-stimulating hormone (TSH) and follicle-stimulating hormone (FSH). Proliferin, which also is designated mitogen-regulated protein 1, is an important secreted protein that plays a role in embryonic development. During fetal development at mid-gestation, proliferin provides a growth signal to target cells in fetal and maternal tissues. It is a secreted protein that belongs to the somatotropin/prolactin growth hormone family of proteins.

REFERENCES

1. Linzer, D.I. and Nathans, D. 1984. Nucleotide sequence of a growth-related mRNA encoding a member of the prolactin-growth hormone family. *Proc. Natl. Acad. Sci. USA* 81: 4255-4259.
2. Linzer, D.I. and Mordacq, J.C. 1987. Transcriptional regulation of proliferin gene expression in response to serum in transfected mouse cells. *EMBO J.* 6: 2281-2288.
3. Hardy, C.M., et al. 2004. Development of mouse-specific contraceptive vaccines: infertility in mice immunized with peptide and polypeptide antigens. *Reproduction* 128: 395-407.
4. Dostert, A. and Heinzel, T. 2004. Negative glucocorticoid receptor response elements and their role in glucocorticoid action. *Curr. Pharm. Des.* 10: 2807-2816.
5. Xie, J., et al. 2004. Osteoblasts respond to hydroxyapatite surfaces with immediate changes in gene expression. *J. Biomed. Mater. Res. A* 71: 108-117.
6. Parfett, C.L. 2005. Mitogen-regulated protein/proliferin mRNA induction following single applications of tumor promoters to murine skin. *Mol. Carcinog.* 43: 117-129.
7. Xie, J., et al. 2005. Adsorption of serum fetuin to hydroxylapatite does not contribute to osteoblast phenotype modifications. *J. Biomed. Mater. Res. A* 73: 39-47.

SOURCE

Proliferation Marker (JC1) is a mouse monoclonal antibody raised against Pokeweed-stimulated lymphocytes of human origin.

PRODUCT

Each vial contains 200 µg IgG_{2a} kappa light chain in 1.0 ml of PBS with < 0.1% sodium azide and 0.1% gelatin.

Proliferation Marker (JC1) is available conjugated to agarose (sc-53424 AC), 500 µg/0.25 ml agarose in 1 ml, for IP; to HRP (sc-53424 HRP), 200 µg/ml, for WB, IHC(P) and ELISA; to either phycoerythrin (sc-53424 PE), fluorescein (sc-53424 FITC), Alexa Fluor® 488 (sc-53424 AF488), Alexa Fluor® 546 (sc-53424 AF546), Alexa Fluor® 594 (sc-53424 AF594) or Alexa Fluor® 647 (sc-53424 AF647), 200 µg/ml, for WB (RGB), IF, IHC(P) and FCM; and to either Alexa Fluor® 680 (sc-53424 AF680) or Alexa Fluor® 790 (sc-53424 AF790), 200 µg/ml, for Near-Infrared (NIR) WB, IF and FCM.

Alexa Fluor® is a trademark of Molecular Probes, Inc., Oregon, USA

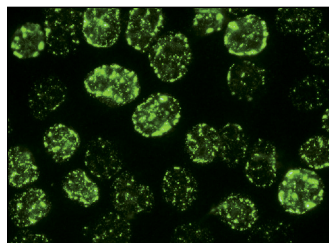
APPLICATIONS

Proliferation Marker (JC1) is recommended for detection of Proliferation Marker of human origin by Western Blotting (starting dilution 1:200, dilution range 1:100-1:1000), immunofluorescence (starting dilution 1:50, dilution range 1:50-1:500) and immunohistochemistry (including paraffin-embedded sections) (starting dilution 1:50, dilution range 1:50-1:500).

RECOMMENDED SUPPORT REAGENTS

To ensure optimal results, the following support reagents are recommended: 1) Western Blotting: use m-IgGκ BP-HRP: sc-516102 or m-IgGκ BP-HRP (Cruz Marker): sc-516102-CM (dilution range: 1:1000-1:10000), Cruz Marker™ Molecular Weight Standards: sc-2035, UltraCruz® Blocking Reagent: sc-516214 and Western Blotting Luminol Reagent: sc-2048. 2) Immunofluorescence: use m-IgGκ BP-FITC: sc-516140 or m-IgGκ BP-PE: sc-516141 (dilution range: 1:50-1:200) with UltraCruz® Mounting Medium: sc-24941 or UltraCruz® Hard-set Mounting Medium: sc-359850. 3) Immunohistochemistry: use m-IgGκ BP-HRP: sc-516102 with DAB, 50X: sc-24982 and Immunohistomount: sc-45086, or Organo/Limonene Mount: sc-45087.

DATA



Proliferation Marker (JC1): sc-53424. Immunofluorescence staining of methanol-fixed HeLa cells showing nuclear localization.

STORAGE

Store at 4° C, **DO NOT FREEZE**. Stable for one year from the date of shipment. Non-hazardous. No MSDS required.

RESEARCH USE

For research use only, not for use in diagnostic procedures.

PROTOCOLS

See our web site at www.scbt.com for detailed protocols and support products.