

# E-Selectin (HAE-Ig): sc-53888

## BACKGROUND

Selectins, also designated CD62 antigens, comprise a family of carbohydrate-binding proteins involved in mediating cellular interactions with leukocytes. L-Selectin (also designated LECAM-1 or CD62L) is expressed on the majority of B and naive T cells and on most monocytes, neutrophils and eosinophils. L-Selectin interacts with specific carbohydrates expressed by activated endothelial cells. P-Selectin (also designated GMP-140 or CD62P), expressed on activated platelets and endothelial cells, and E-Selectin (also designated ELMA-1 or CD62E), expressed on endothelial cells, exhibit overlapping ligand specificities. E-Selectin is expressed by cytokine-stimulated endothelial cells and is thought to be responsible for the accumulation of blood leukocytes at sites of inflammation by mediating the adhesion of cells to the vascular lining.

## REFERENCES

1. Varki, A. 1994. Selectin ligands. *Proc. Natl. Acad. Sci. USA* 91: 7390-7397.
2. Lasky, L.A. 1995. Selectin-carbohydrate interactions and the initiation of the inflammatory response. *Annu. Rev. Biochem.* 64: 113-139.
3. Pavalko, R.M., Walker, D.M., Graham, L., Goheen, M., Doerschuk, C.M. and Kansas, G.S. 1995. The cytoplasmic domain of L-Selectin interacts with cytoskeletal proteins via  $\alpha$ -actinin: receptor positioning in microvilli does not require interaction with  $\alpha$ -actinin. *J. Cell Biol.* 129: 1155-1164.
4. Tedder, T.F., Steeber, D.A., Chen, A. and Engel, P. 1995. The selectins: vascular adhesion molecules. *FASEB J.* 10: 866-873.
5. Rosen, S.D. and Bertozzi, C.R. 1996. Two selectins converge on sulphate. *Leukocyte adhesion. Curr. Biol.* 6: 261-264.
6. McEver, R.P., Moore, K.L. and Cummings, R.D. 1996. Leukocyte trafficking mediated by selectin-carbohydrate interactions. *J. Biol. Chem.* 270: 11025-11028.
7. Diacovo, T.G., Puri, K.D., Warnock, R.A., Springer, T.A. and von Andrian, U.H. 1996. Platelet-mediated lymphocyte delivery to high endothelial venules. *Science* 273: 252-255.
8. Frenette, P.S., Mayadas, T.N., Rayburn, H., Hynes, R.O. and Wagner, D.D. 1996. Susceptibility to infection and altered hematopoiesis in mice deficient in both P- and E-Selectins. *Cell* 84: 563-574.

## CHROMOSOMAL LOCATION

Genetic locus: SELE (human) mapping to 1q24.2.

## SOURCE

E-Selectin (HAE-Ig) is a mouse monoclonal antibody raised against E-Selectin of human origin.

## PRODUCT

Each vial contains 200  $\mu$ g IgG<sub>1</sub> kappa light chain in 1.0 ml of PBS with < 0.1% sodium azide and 0.1% gelatin.

E-Selectin (HAE-Ig) is available conjugated to either phycoerythrin (sc-53888 PE) or fluorescein (sc-53888 FITC), 200  $\mu$ g/ml, for IF, IHC(P) and FCM.

## APPLICATIONS

E-Selectin (HAE-Ig) is recommended for detection of E-Selectin of human origin by Western Blotting (starting dilution 1:200, dilution range 1:100-1:1000), immunoprecipitation [1-2  $\mu$ g per 100-500  $\mu$ g of total protein (1 ml of cell lysate)], immunofluorescence (starting dilution 1:50, dilution range 1:50-1:500) and flow cytometry (1  $\mu$ g per 1 x 10<sup>6</sup> cells).

Suitable for use as control antibody for E-Selectin siRNA (h): sc-29296, E-Selectin shRNA Plasmid (h): sc-29296-SH and E-Selectin shRNA (h) Lentiviral Particles: sc-29296-V.

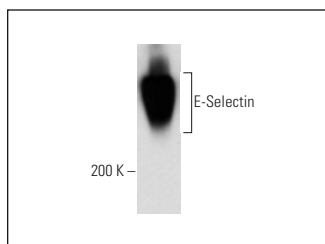
Molecular Weight of E-Selectin: 115 kDa.

Positive Controls: HeLa whole cell lysate: sc-2200, Jurkat whole cell lysate: sc-2204 or Jurkat + PMA cell lysate: sc-24718.

## RECOMMENDED SUPPORT REAGENTS

To ensure optimal results, the following support reagents are recommended: 1) Western Blotting: use m-IgG $\kappa$  BP-HRP: sc-516102 or m-IgG $\kappa$  BP-HRP (Cruz Marker): sc-516102-CM (dilution range: 1:1000-1:10000), Cruz Marker<sup>™</sup> Molecular Weight Standards: sc-2035, TBS Blotto A Blocking Reagent: sc-2333 and Western Blotting Luminol Reagent: sc-2048. 2) Immunoprecipitation: use Protein A/G PLUS-Agarose: sc-2003 (0.5 ml agarose/2.0 ml). 3) Immunofluorescence: use m-IgG $\kappa$  BP-FITC: sc-516140 or m-IgG $\kappa$  BP-PE: sc-516141 (dilution range: 1:50-1:200) with UltraCruz<sup>®</sup> Mounting Medium: sc-24941 or UltraCruz<sup>®</sup> Hard-set Mounting Medium: sc-359850.

## DATA



E-Selectin (HAE-Ig): sc-53888. Western blot analysis of human recombinant E-Selectin/Fc Chimera homodimer under non-reducing conditions.

## STORAGE

Store at 4° C, **\*\*DO NOT FREEZE\*\***. Stable for one year from the date of shipment. Non-hazardous. No MSDS required.

## RESEARCH USE

For research use only, not for use in diagnostic procedures.



See **E-Selectin (D-7): sc-137054** for E-Selectin antibody conjugates, including AC, HRP, FITC, PE, Alexa Fluor<sup>®</sup> 488 and Alexa Fluor<sup>®</sup> 647.