

CALM (S-19): sc-5396

BACKGROUND

Clathrin-coated pits and vesicles are assembled for receptor-mediated endocytosis through interaction with clathrin associated protein complexes. Vesicle transport is mediated from the *trans*-Golgi network by the adapter complex AP-1 and from the plasma membrane by the AP-2 complex. The AP-1 and AP-2 adapter protein complexes consist of clathrin binding adaptin proteins (γ and $\beta 1$ for AP-1, α and $\beta 2$ for AP-2) and two smaller subunits known as AP50 and AP17. The α and β adaptin chains have a similar two-domain organization with C-terminal domains that vary in both sequence and length. α -Adaptin splice variants A and C display variable relative expression levels and differential distribution in different tissues. AP180 (also designated AP-3 or F1-20) is a synapse-specific clathrin assembly protein. The protein CALM (clathrin assembly protein lymphoid myeloid leukemia) is highly homologous to AP180 and may also be involved in clathrin assembly.

CHROMOSOMAL LOCATION

Genetic locus: PICALM (human) mapping to 11q14.2; Picalm (mouse) mapping to 7 E1.

SOURCE

CALM (S-19) is an affinity purified goat polyclonal antibody raised against a peptide mapping within an internal region of CALM of rat origin.

PRODUCT

Each vial contains 200 μ g IgG in 1.0 ml of PBS with < 0.1% sodium azide and 0.1% gelatin.

Blocking peptide available for competition studies, sc-5396 P, (100 μ g peptide in 0.5 ml PBS containing < 0.1% sodium azide and 0.2% BSA).

STORAGE

Store at 4° C, ****DO NOT FREEZE****. Stable for one year from the date of shipment. Non-hazardous. No MSDS required.

APPLICATIONS

CALM (S-19) is recommended for detection of CALM of mouse, rat and human origin by Western Blotting (starting dilution 1:200, dilution range 1:100-1:1000), immunoprecipitation [1-2 μ g per 100-500 μ g of total protein (1 ml of cell lysate)], immunofluorescence (starting dilution 1:50, dilution range 1:50-1:500) and solid phase ELISA (starting dilution 1:30, dilution range 1:30-1:3000).

CALM (S-19) is also recommended for detection of CALM in additional species, including equine, canine and porcine.

Suitable for use as control antibody for CALM siRNA (h): sc-29882, CALM siRNA (m): sc-29883, CALM shRNA Plasmid (h): sc-29882-SH, CALM shRNA Plasmid (m): sc-29883-SH, CALM shRNA (h) Lentiviral Particles: sc-29882-V and CALM shRNA (m) Lentiviral Particles: sc-29883-V.

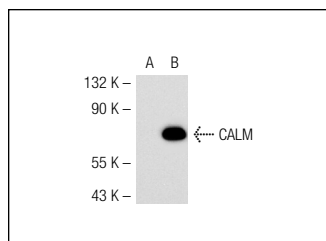
Molecular Weight of CALM: 62/72 kDa.

Positive Controls: A-431 whole cell lysate: sc-2201, Jurkat whole cell lysate: sc-2204 or CALM (m): 293T Lysate: sc-126567.

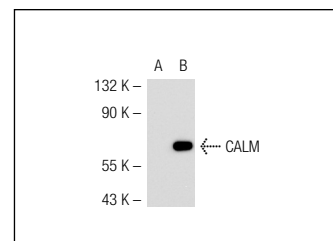
RECOMMENDED SECONDARY REAGENTS

To ensure optimal results, the following support (secondary) reagents are recommended: 1) Western Blotting: use donkey anti-goat IgG-HRP: sc-2020 (dilution range: 1:2000-1:100,000) or Cruz Marker™ compatible donkey anti-goat IgG-HRP: sc-2033 (dilution range: 1:2000-1:5000), Cruz Marker™ Molecular Weight Standards: sc-2035, TBS Blotto A Blocking Reagent: sc-2333 and Western Blotting Luminol Reagent: sc-2048. 2) Immunoprecipitation: use Protein A/G PLUS-Agarose: sc-2003 (0.5 ml agarose/2.0 ml). 3) Immunofluorescence: use donkey anti-goat IgG-FITC: sc-2024 (dilution range: 1:100-1:400) or donkey anti-goat IgG-TR: sc-2783 (dilution range: 1:100-1:400) with UltraCruz™ Mounting Medium: sc-24941.

DATA



CALM (S-19): sc-5396. Western blot analysis of CALM expression in non-transfected: sc-117752 (A) and mouse CALM transfected: sc-126567 (B) 293T whole cell lysates.



CALM (S-19): sc-5396. Western blot analysis of CALM expression in non-transfected: sc-117752 (A) and mouse CALM transfected: sc-126568 (B) 293T whole cell lysates.

SELECT PRODUCT CITATIONS

1. Archangelo, L.F., et al. 2006. The novel CALM interactor CATS influences the subcellular localization of the leukemogenic fusion protein CALM/AF10. *Oncogene* 25: 4099-4109.

RESEARCH USE

For research use only, not for use in diagnostic procedures.

PROTOCOLS

See our web site at www.scbt.com or our catalog for detailed protocols and support products.

MONOS
Satisfaction
Guaranteed

Try **CALM (A-2): sc-271224** or **CALM (D-8): sc-166522**, our highly recommended monoclonal alternatives to CALM (S-19).