

Integrin $\beta 5$ (E-18): sc-5402

BACKGROUND

Integrins are heterodimers composed of noncovalently associated transmembrane α and β subunits. The 16α and 8β subunits heterodimerize to produce more than 20 different receptors. Most Integrin receptors bind ligands that are components of the extracellular matrix, including Fibronectin, Collagen and Vitronectin. Certain Integrins can also bind to soluble ligands such as Fibrinogen, or to counterreceptors on adjacent cells, such as the intracellular adhesion molecules (ICAMs), leading to aggregation of cells. Ligands serve to cross-link or cluster Integrins by binding to adjacent Integrin receptors; both receptor clustering and ligand occupancy are necessary for the activation of Integrin-mediated responses. In addition to mediating cell adhesion and cytoskeletal organization, Integrins function as signaling receptors. Signals transduced by Integrins play a role in many biological processes, including cell growth, differentiation, migration and apoptosis.

REFERENCES

- Hynes, R.O. 1992. Integrins: versatility, modulation, and signaling in cell adhesion. *Cell* 69: 11-25.
- Miyamoto, S., Akiyama, S.K. and Yamada, K.M. 1995. Synergistic roles for receptor occupancy and aggregation in Integrin transmembrane function. *Science* 267: 883-885.
- Clark, E.A. and Brugge, J.S. 1995. Integrins and signal transduction pathways: the road taken. *Science* 268: 233-239.

CHROMOSOMAL LOCATION

Genetic locus: ITGB5 (human) mapping to 3q21.2; Itgb5 (mouse) mapping to 16 B3.

SOURCE

Integrin $\beta 5$ (E-18) is an affinity purified goat polyclonal antibody raised against a peptide mapping within an internal region of Integrin $\beta 5$ of human origin.

PRODUCT

Each vial contains 200 μ g IgG in 1.0 ml of PBS with < 0.1% sodium azide and 0.1% gelatin.

Blocking peptide available for competition studies, sc-5402 P, (100 μ g peptide in 0.5 ml PBS containing < 0.1% sodium azide and 0.2% BSA).

STORAGE

Store at 4° C, ****DO NOT FREEZE****. Stable for one year from the date of shipment. Non-hazardous. No MSDS required.

RESEARCH USE

For research use only, not for use in diagnostic procedures.

PROTOCOLS

See our web site at www.scbt.com or our catalog for detailed protocols and support products.

APPLICATIONS

Integrin $\beta 5$ (E-18) is recommended for detection of Integrin $\beta 5$ of mouse, rat and human origin by Western Blotting (starting dilution 1:200, dilution range 1:100-1:1000), immunoprecipitation [1-2 μ g per 100-500 μ g of total protein (1 ml of cell lysate)], immunofluorescence (starting dilution 1:50, dilution range 1:50-1:500) and solid phase ELISA (starting dilution 1:30, dilution range 1:30-1:3000).

Suitable for use as control antibody for Integrin $\beta 5$ siRNA (h): sc-35680, Integrin $\beta 5$ siRNA (m): sc-35681, Integrin $\beta 5$ siRNA (r): sc-270465, Integrin $\beta 5$ shRNA Plasmid (h): sc-35680-SH, Integrin $\beta 5$ shRNA Plasmid (m): sc-35681-SH, Integrin $\beta 5$ shRNA Plasmid (r): sc-270465-SH, Integrin $\beta 5$ shRNA (h) Lentiviral Particles: sc-35680-V, Integrin $\beta 5$ shRNA (m) Lentiviral Particles: sc-35681-V and Integrin $\beta 5$ shRNA (r) Lentiviral Particles: sc-270465-V.

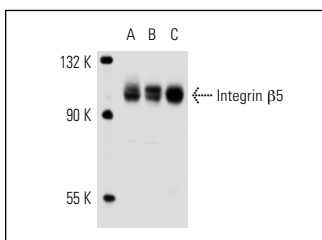
Molecular Weight of Integrin $\beta 5$: 100 kDa.

Positive Controls: SW480 cell lysate: sc-2219, A549 cell lysate: sc-2413 or HeLa whole cell lysate: sc-2200.

RECOMMENDED SECONDARY REAGENTS

To ensure optimal results, the following support (secondary) reagents are recommended: 1) Western Blotting: use donkey anti-goat IgG-HRP: sc-2020 (dilution range: 1:2000-1:100,000) or Cruz Marker™ compatible donkey anti-goat IgG-HRP: sc-2033 (dilution range: 1:2000-1:5000), Cruz Marker™ Molecular Weight Standards: sc-2035, TBS Blotto A Blocking Reagent: sc-2333 and Western Blotting Luminol Reagent: sc-2048. 2) Immunoprecipitation: use Protein A/G PLUS-Agarose: sc-2003 (0.5 ml agarose/2.0 ml). 3) Immunofluorescence: use donkey anti-goat IgG-FITC: sc-2024 (dilution range: 1:100-1:400) or donkey anti-goat IgG-TR: sc-2783 (dilution range: 1:100-1:400) with UltraCruz™ Mounting Medium: sc-24941.

DATA



Integrin $\beta 5$ (E-18): sc-5402. Western blot analysis of Integrin $\beta 5$ expression in SW480 (A), HeLa (B) and A549 (C) whole cell lysates.

SELECT PRODUCT CITATIONS

- Gao, J.L., et al. 2013. Tetrandrine suppresses cancer angiogenesis and metastasis in 4T1 tumor bearing mice. *Evid. Based Complement. Alternat. Med.* 2013: 265061.