

LIN-28 (C-14): sc-54029

BACKGROUND

LIN-28 is a highly conserved, RNA-binding, cytoplasmic protein. It consists of a cold shock domain and retroviral-type (CCHC) zinc finger motifs that were first identified in *Caenorhabditis elegans*. LIN-28 controls the timing of events during embryonic development and is readily expressed in embryos, embryonic stem cells and embryonal carcinoma cells. The presence of LIN-28 persists in some adult tissues including cardiac and skeletal muscle. In differentiating myoblasts, LIN-28 increases protein synthesis efficiency and binds to the growth and differentiation factor IGF-II.

CHROMOSOMAL LOCATION

Genetic locus: LIN28A (human) mapping to 1p36.11; Lin28a (mouse) mapping to 4 D3.

SOURCE

LIN-28 (C-14) is an affinity purified goat polyclonal antibody raised against a peptide mapping at the C-terminus of LIN-28 of human origin.

PRODUCT

Each vial contains 200 µg IgG in 1.0 ml of PBS with < 0.1% sodium azide and 0.1% gelatin.

Blocking peptide available for competition studies, sc-54029 P, (100 µg peptide in 0.5 ml PBS containing < 0.1% sodium azide and 0.2% BSA).

STORAGE

Store at 4° C, ****DO NOT FREEZE****. Stable for one year from the date of shipment. Non-hazardous. No MSDS required.

RESEARCH USE

For research use only, not for use in diagnostic procedures.

APPLICATIONS

LIN-28 (C-14) is recommended for detection of LIN-28 of mouse, rat and human origin by Western Blotting (starting dilution 1:200, dilution range 1:100-1:1000), immunoprecipitation [1-2 µg per 100-500 µg of total protein (1 ml of cell lysate)], immunofluorescence (starting dilution 1:50, dilution range 1:50-1:500), immunohistochemistry (including paraffin-embedded sections) (starting dilution 1:50, dilution range 1:50-1:500) and solid phase ELISA (starting dilution 1:30, dilution range 1:30-1:3000).

LIN-28 (C-14) is also recommended for detection of LIN-28 in additional species, including equine and porcine.

Suitable for use as control antibody for LIN-28 siRNA (h): sc-106829, LIN-28 siRNA (m): sc-106990, LIN-28 shRNA Plasmid (h): sc-106829-SH, LIN-28 shRNA Plasmid (m): sc-106990-SH, LIN-28 shRNA (h) Lentiviral Particles: sc-1068 29-V and LIN-28 shRNA (m) Lentiviral Particles: sc-106990-V.

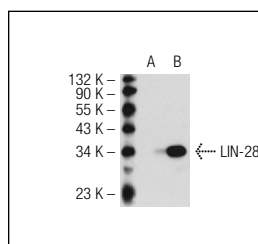
Molecular Weight of LIN-28: 28 kDa.

Positive Controls: LIN-28 (h2): 293T Lysate: sc-175922, HeLa whole cell lysate: sc-2200 or F9 cell lysate: sc-2245.

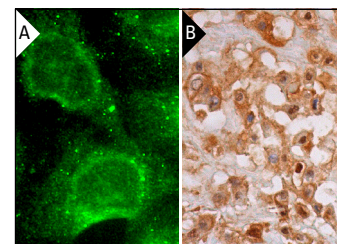
RECOMMENDED SECONDARY REAGENTS

To ensure optimal results, the following support (secondary) reagents are recommended: 1) Western Blotting: use donkey anti-goat IgG-HRP: sc-2020 (dilution range: 1:2000-1:100,000) or Cruz Marker™ compatible donkey anti-goat IgG-HRP: sc-2033 (dilution range: 1:2000-1:5000), Cruz Marker™ Molecular Weight Standards: sc-2035, TBS Blotto A Blocking Reagent: sc-2333 and Western Blotting Luminol Reagent: sc-2048. 2) Immunoprecipitation: use Protein A/G PLUS-Agarose: sc-2003 (0.5 ml agarose/2.0 ml). 3) Immunofluorescence: use donkey anti-goat IgG-FITC: sc-2024 (dilution range: 1:100-1:400) or donkey anti-goat IgG-TR: sc-2783 (dilution range: 1:100-1:400) with UltraCruz™ Mounting Medium: sc-24941. 4) Immunohistochemistry: use ImmunoCruz™: sc-2053 or ABC: sc-2023 goat IgG Staining Systems.

DATA



LIN-28 (C-14): sc-54029. Western blot analysis of LIN-28 expression in non-transfected: sc-117752 (A) and human LIN-28 transfected: sc-175922 (B) 293T whole cell lysates.



LIN-28 (C-14): sc-54029. Immunofluorescence staining of methanol-fixed HeLa cells showing cytoplasmic and cytoplasmic processing bodies (p-bodies) localization (A). Immunoperoxidase staining of formalin fixed, paraffin-embedded human placenta tissue showing cytoplasmic, membrane and nuclear staining of decidual cells (B).

PROTOCOLS

See our web site at www.scbt.com or our catalog for detailed protocols and support products.

MONOS
Satisfaction
Guaranteed

Try **LIN-28 (C-9): sc-374460** or **LIN-28 (6D1F9): sc-293120**, our highly recommended monoclonal alternatives to LIN-28 (C-14).