

# LSm1 (C-16): sc-54088

## BACKGROUND

Sm and Sm-like (LSm) proteins form donut-shaped heptameric complexes that are involved in various steps of RNA metabolism. LSm proteins facilitate RNA protein interactions and structural changes that are required during ribosomal subunit assembly. LSm1, also designated U6 snRNA-associated Sm-like protein or small nuclear ribonucleolar CaSm, binds specifically to the 3'-terminal U-tract of U6 snRNA. Human LSm1 localizes to the cytoplasm in small, discrete foci. These foci are also the localization site for the mRNA decapping enzyme Dcp1/2 and the exonuclease Xrn1. LSm1 is naturally over-expressed in pancreatic cancer as well as in certain breast cancer cell lines. The downregulation of LSm1 is involved in the progression of prostate cancer.

## REFERENCES

- Bouveret, E., Rigaut, G., Shevchenko, A., Wilm, M. and Séraphin, B. 2000. A Sm-like protein complex that participates in mRNA degradation. *EMBO J.* 19: 1661-1671.
- Takahashi, S., Suzuki, S., Inaguma, S., Cho, Y.M., Ikeda, Y., Hayashi, N., Inoue, T., Sugimura, Y., Nishiyama, N., Fujita, T., Ushijima, T. and Shirai, T. 2002. Downregulation of LSm1 is involved in human prostate cancer progression. *Br. J. Cancer* 86: 940-946.
- Noueiry, A.O., Diez, J., Falk, S.P., Chen, J. and Ahlquist, P. 2003. Yeast Lsm1p-7p/Pat1p deadenylation-dependent mRNA-decapping factors are required for brome mosaic virus genomic RNA translation. *Mol. Cell. Biol.* 23: 4094-4106.
- Kufel, J., Allmang, C., Petfalski, E., Beggs, J. and Tollervey, D. 2003. LSm proteins are required for normal processing and stability of ribosomal RNAs. *J. Biol. Chem.* 278: 2147-2156.
- Ingelfinger, D., Arndt-Jovin, D.J., Lüthmann, R. and Achsel, T. 2003. The human LSm1-7 proteins co-localize with the mRNA-degrading enzymes Dcp1/2 and Xrn1 in distinct cytoplasmic foci. *RNA* 8: 1489-1501.
- Chu, C.Y. and Rana, T.M. 2006. Translation repression in human cells by microRNA-induced gene silencing requires RCK/p54. *PLoS Biol.* 4: e210.
- Elsheikha, H.M., Murphy, A.J., Trembley, S.J., Mansfield, L.S., Ghanam, M.S. and el-Garhy, M.F. 2006. Molecular and microscopic techniques for detection of *Sarcocystis neurona* sporocysts in fecal samples. *J. Egypt. Soc. Parasitol.* 36: 713-725.
- Streicher, K.L., Yang, Z.Q., Draghici, S. and Ethier, S.P. 2007. Transforming function of the LSm1 oncogene in human breast cancers with the 8p11-12 amplicon. *Oncogene* 26: 2104-2114.
- Beckham, C.J., Light, H.R., Nissan, T.A., Ahlquist, P., Parker, R. and Nouiery, A. 2007. Interactions between brome mosaic virus RNAs and cytoplasmic processing bodies. *J. Virol.* 81: 9759-9768.

## CHROMOSOMAL LOCATION

Genetic locus: LSM1 (human) mapping to 8p11.23; Lsm1 (mouse) mapping to 8 A2.

## RESEARCH USE

For research use only, not for use in diagnostic procedures.

## SOURCE

LSm1 (C-16) is an affinity purified goat polyclonal antibody raised against a peptide mapping at the C-terminus of LSm1 of human origin.

## PRODUCT

Each vial contains 200 µg IgG in 1.0 ml of PBS with < 0.1% sodium azide and 0.1% gelatin.

Blocking peptide available for competition studies, sc-54088 P, (100 µg peptide in 0.5 ml PBS containing < 0.1% sodium azide and 0.2% BSA).

## APPLICATIONS

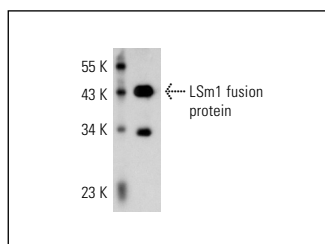
LSm1 (C-16) is recommended for detection of LSm1 of mouse, rat and human origin by Western Blotting (starting dilution 1:200, dilution range 1:100-1:1000), immunoprecipitation [1-2 µg per 100-500 µg of total protein (1 ml of cell lysate)], immunofluorescence (starting dilution 1:50, dilution range 1:50-1:500) and solid phase ELISA (starting dilution 1:30, dilution range 1:30-1:3000).

LSm1 (C-16) is also recommended for detection of LSm1 in additional species, including equine, canine, bovine and porcine.

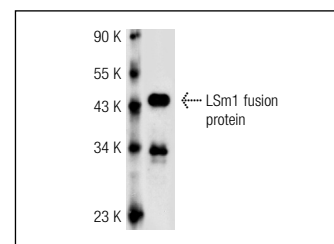
Suitable for use as control antibody for LSm1 siRNA (h): sc-72335, LSm1 siRNA (m): sc-72336, LSm1 shRNA Plasmid (h): sc-72335-SH, LSm1 shRNA Plasmid (m): sc-72336-SH, LSm1 shRNA (h) Lentiviral Particles: sc-72335-V and LSm1 shRNA (m) Lentiviral Particles: sc-72336-V.

Molecular Weight of LSm1: 15 kDa.

## DATA



LSm1 (C-16): sc-54088. Western blot analysis of human recombinant LSm1 fusion protein.



LSm1 (C-16): sc-54088. Western blot analysis of human recombinant LSm1 fusion protein.

## STORAGE

Store at 4° C, \*\*DO NOT FREEZE\*\*. Stable for one year from the date of shipment. Non-hazardous. No MSDS required.


 MONOS  
Satisfaction  
Guaranteed

Try **LSm1 (A-9): sc-373685** or **LSm1 (A-4): sc-398623**, our highly recommended monoclonal alternatives to LSm1 (C-16).