

FBL4 (W-15): sc-54489

BACKGROUND

FBL4 is a 621 amino acid protein encoded by the human gene FBXL4. FBL4 contains one 40 amino acid F-box region, making it a member of the F-box family. FBL4 also contains eight LRR (leucine-rich) repeats. F-box proteins are critical components of the SCF (skp1-CUL-1-F-box protein) type E3 ubiquitin ligase complex and are involved in substrate recognition and recruitment for ubiquitination. F-box proteins are members of a large family that regulates cell cycle, immune response, signaling cascades and developmental programs by targeting proteins, such as cyclins, cyclin-dependent kinase inhibitors, I κ B- α and β -catenin, for degradation by the proteasome after ubiquitination. Localized near the nucleus in the cytoplasm, FBL4 is expressed in heart, kidney, liver, lung, pancreas and placenta; however, it is not found in skeletal muscle.

CHROMOSOMAL LOCATION

Genetic locus: FBXL4 (human) mapping to 6q16.1; Fbxl4 (mouse) mapping to 4 A3.

SOURCE

FBL4 (W-15) is an affinity purified goat polyclonal antibody raised against a peptide mapping within an internal region of FBL4 of human origin.

PRODUCT

Each vial contains 200 μ g IgG in 1.0 ml of PBS with < 0.1% sodium azide and 0.1% gelatin.

Blocking peptide available for competition studies, sc-54489 P, (100 μ g peptide in 0.5 ml PBS containing < 0.1% sodium azide and 0.2% BSA).

STORAGE

Store at 4° C, ****DO NOT FREEZE****. Stable for one year from the date of shipment. Non-hazardous. No MSDS required.

RESEARCH USE

For research use only, not for use in diagnostic procedures.

APPLICATIONS

FBL4 (W-15) is recommended for detection of FBL4 of mouse, rat and human origin by Western Blotting (starting dilution 1:200, dilution range 1:100-1:1000), immunoprecipitation [1-2 μ g per 100-500 μ g of total protein (1 ml of cell lysate)], immunofluorescence (starting dilution 1:50, dilution range 1:50-1:500), immunohistochemistry (including paraffin-embedded sections) (starting dilution 1:50, dilution range 1:50-1:500) and solid phase ELISA (starting dilution 1:30, dilution range 1:30-1:3000).

FBL4 (W-15) is also recommended for detection of FBL4 in additional species, including equine, canine, bovine and porcine.

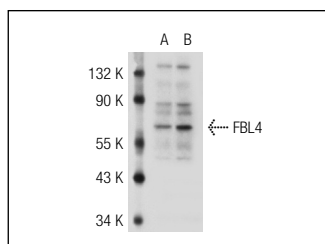
Suitable for use as control antibody for FBL4 siRNA (h): sc-62300, FBL4 siRNA (m): sc-62301, FBL4 shRNA Plasmid (h): sc-62300-SH, FBL4 shRNA Plasmid (m): sc-62301-SH, FBL4 shRNA (h) Lentiviral Particles: sc-62300-V and FBL4 shRNA (m) Lentiviral Particles: sc-62301-V.

Molecular Weight of FBL4: 70 kDa.

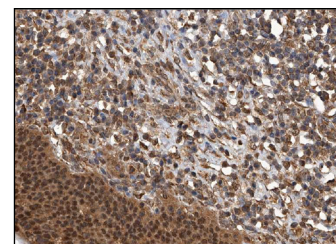
RECOMMENDED SECONDARY REAGENTS

To ensure optimal results, the following support (secondary) reagents are recommended: 1) Western Blotting: use donkey anti-goat IgG-HRP: sc-2020 (dilution range: 1:2000-1:100,000) or Cruz Marker™ compatible donkey anti-goat IgG-HRP: sc-2033 (dilution range: 1:2000-1:5000), Cruz Marker™ Molecular Weight Standards: sc-2035, TBS Blotto A Blocking Reagent: sc-2333 and Western Blotting Luminol Reagent: sc-2048. 2) Immunoprecipitation: use Protein A/G PLUS-Agarose: sc-2003 (0.5 ml agarose/2.0 ml). 3) Immunofluorescence: use donkey anti-goat IgG-FITC: sc-2024 (dilution range: 1:100-1:400) or donkey anti-goat IgG-TR: sc-2783 (dilution range: 1:100-1:400) with UltraCruz™ Mounting Medium: sc-24941. 4) Immunohistochemistry: use ImmunoCruz™: sc-2053 or ABC: sc-2023 goat IgG Staining Systems.

DATA



FBL4 (W-15): sc-54489. Western blot analysis of FBL4 expression in non-transfected: sc-117752 (A) and human FBL4 transfected (B) 293T whole cell lysates.



FBL4 (W-15): sc-54489. Immunoperoxidase staining of formalin fixed, paraffin-embedded human urinary bladder tissue showing nuclear cytoplasmic staining of urothelial cells at high magnification. Kindly provided by The Swedish Human Protein Atlas

SELECT PRODUCT CITATIONS

1. Van Rechem, C., et al. 2011. The SKP1-Cul1-F-box and leucine-rich repeat protein 4 (SCF-FbxL4) ubiquitin ligase regulates lysine demethylase 4A (KDM4A)/Jumonji domain-containing 2A (JMJD2A). *J. Biol. Chem.* 286: 30462-30470.

PROTOCOLS

See our web site at www.scbt.com or our catalog for detailed protocols and support products.

MONOS
Satisfaction
Guaranteed

Try **FBL4 (A-7): sc-376102** or **FBL4 (D-9): sc-393772**, our highly recommended monoclonal alternatives to FBL4 (W-15).