

GULP (P-19): sc-54528

BACKGROUND

GULP (engulfment adaptor PTB domain containing 1) is a 304 amino acid protein encoded by the human gene GULP1. GULP is believed to function as an adapter protein, as it is required for efficient phagocytosis of apoptotic cells. GULP also helps modulate cellular glycosphingolipid and cholesterol transport. It also may play a role in the internalization and endosomal trafficking of various LRP1 ligands, such as PSAP. Increased cytoplasmic levels of GULP are associated with increases in cellular levels of GTP-bound ARF6. Found as a homodimer, GULP, interacts with Clathrin, GDP-bound ARF6, but not with GTP-bound ARF6. It is also found as part of a complex composed of GULP1, CENTB1 and ARF6. GULP is widely expressed and can be detected in macrophages, pancreas, kidney, skeletal muscle, heart, colon, intestine, lung, placenta and ovary.

REFERENCES

1. Liu, Q.A. and Hengartner, M.O. 1998. Candidate adaptor protein CED-6 promotes the engulfment of apoptotic cells in *C. elegans*. *Cell* 93: 961-972.
2. Liu, Q.A. and Hengartner, M.O. 2000. Human CED-6 encodes a functional homologue of the *Caenorhabditis elegans* engulfment protein CED-6. *Curr. Biol.* 9: 1347-1350.
3. Smits, E., Van Criekinge, W., Plaetinck, G. and Bogaert, T. 2000. The human homologue of *Caenorhabditis elegans* CED-6 specifically promotes phagocytosis of apoptotic cells. *Curr. Biol.* 9: 1351-1354.
4. Su, H.P., Brugnera, E., Van Criekinge, W., Smits, E., Hengartner, M., Bogaert, T. and Ravichandran, K.S. 2000. Identification and characterization of a dimerization domain in CED-6, an adapter protein involved in engulfment of apoptotic cells. *J. Biol. Chem.* 275: 9542-9549.
5. Su, H.P., Nakada-Tsukui, K., Tosello-Trampont, A.C., Li, Y., Bu, G., Henson, P.M. and Ravichandran, K.S. 2002. Interaction of CED-6/GULP, an adapter protein involved in engulfment of apoptotic cells with CED-1 and CD91/low density lipoprotein receptor-related protein (LRP). *J. Biol. Chem.* 277: 11772-11779.

CHROMOSOMAL LOCATION

Genetic locus: GULP1 (human) mapping to 2q32.1; Gulp1 (mouse) mapping to 1 C1.1.

SOURCE

GULP (P-19) is an affinity purified goat polyclonal antibody raised against a peptide mapping near the C-terminus of GULP of human origin.

PRODUCT

Each vial contains 200 µg IgG in 1.0 ml of PBS with < 0.1% sodium azide and 0.1% gelatin.

Blocking peptide available for competition studies, sc-54528 P, (100 µg peptide in 0.5 ml PBS containing < 0.1% sodium azide and 0.2% BSA).

RESEARCH USE

For research use only, not for use in diagnostic procedures.

APPLICATIONS

GULP (P-19) is recommended for detection of GULP of mouse, rat and human origin by Western Blotting (starting dilution 1:200, dilution range 1:100-1:1000), immunoprecipitation [1-2 µg per 100-500 µg of total protein (1 ml of cell lysate)], immunofluorescence (starting dilution 1:50, dilution range 1:50-1:500) and solid phase ELISA (starting dilution 1:30, dilution range 1:30-1:3000).

GULP (P-19) is also recommended for detection of GULP in additional species, including canine, porcine and avian.

Suitable for use as control antibody for GULP siRNA (h): sc-62427, GULP siRNA (m): sc-62428, GULP shRNA Plasmid (h): sc-62427-SH, GULP shRNA Plasmid (m): sc-62428-SH, GULP shRNA (h) Lentiviral Particles: sc-62427-V and GULP shRNA (m) Lentiviral Particles: sc-62428-V.

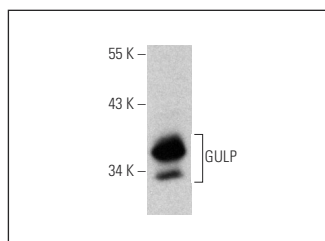
Molecular Weight of GULP: 35 kDa.

Positive Controls: Caki-1 cell lysate: sc-2224

RECOMMENDED SECONDARY REAGENTS

To ensure optimal results, the following support (secondary) reagents are recommended: 1) Western Blotting: use donkey anti-goat IgG-HRP: sc-2020 (dilution range: 1:2000-1:100,000) or Cruz Marker™ compatible donkey anti-goat IgG-HRP: sc-2033 (dilution range: 1:2000-1:5000), Cruz Marker™ Molecular Weight Standards: sc-2035, TBS Blotto A Blocking Reagent: sc-2333 and Western Blotting Luminol Reagent: sc-2048. 2) Immunoprecipitation: use Protein A/G PLUS-Agarose: sc-2003 (0.5 ml agarose/2.0 ml). 3) Immunofluorescence: use donkey anti-goat IgG-FITC: sc-2024 (dilution range: 1:100-1:400) or donkey anti-goat IgG-TR: sc-2783 (dilution range: 1:100-1:400) with UltraCruz™ Mounting Medium: sc-24941.

DATA



GULP (P-19): sc-54528. Western blot analysis of GULP expression in Caki-1 whole cell lysate.

STORAGE

Store at 4° C, **DO NOT FREEZE**. Stable for one year from the date of shipment. Non-hazardous. No MSDS required.

MONOS
Satisfaction
Guaranteed

Try **GULP (E-4): sc-374591**, our highly recommended monoclonal alternative to GULP (P-19).