

UBE4A (G-20): sc-54554

BACKGROUND

Ubiquitination is an important mechanism through which three classes of enzymes act in concert to target short-lived or abnormal proteins for destruction. The three classes of enzymes involved in ubiquitination are the ubiquitin-activating enzymes (E1s), the ubiquitin-conjugating enzymes (E2s) and the ubiquitin-protein ligases (E3s). UBE4A (ubiquitin conjugation factor E4 A), also known as E4, UFD2 or UBOX2, is a 1,066 amino acid protein that functions in the multiubiquitin pathway of protein degradation. Expressed in cortical neurons and in tubular kidney cells, UBE4A is the human homolog of the *Saccharomyces cerevisiae* UFD2 protein and functions with the UBE (ubiquitin enzymes) proteins to catalyze ubiquitin chain assembly. UBE4A may be involved in cell growth and differentiation and can act as an autoantigen in scleroderma, a disease characterized by excessive deposits of collagen in the skin or other organs. Two isoforms of UBE4A exist due to alternative splicing events.

REFERENCES

1. Online Mendelian Inheritance in Man, OMIM™. 2002. Johns Hopkins University, Baltimore, MD. MIM Number: 603753. World Wide Web URL: <http://www.ncbi.nlm.nih.gov/omim/>
2. Contino, G., Amati, F., Pucci, S., Pontieri, E., Pichiorri, F., Novelli, A., Botta, A., Mango, R., Nardone, A.M., Sangiulio, F.C., Citro, G., Spagnoli, L.G. and Novelli, G. 2004. Expression analysis of the gene encoding for the U-box-type ubiquitin ligase UBE4A in human tissues. *Gene* 328: 69-74.
3. Spinette, S., Lengauer, C., Mahoney, J.A., Jallepalli, P.V., Wang, Z., Casciola-Rosen, L. and Rosen, A. 2004. UFD2, a novel autoantigen in scleroderma, regulates sister chromatid separation. *Cell Cycle* 3: 1638-1644.
4. Carén, H., Holmstrand, A., Sjöberg, R.M. and Martinsson, T. 2006. The two human homologues of yeast UFD2 ubiquitination factor, UBE4A and UBE4B, are located in common neuroblastoma deletion regions and are subject to mutations in tumours. *Eur. J. Cancer* 42: 381-387.
5. Vazquez-Ortiz, G., García, J.A., Ciudad, C.J., Noé, V., Peñuelas, S., López-Romero, R., Mendoza-Lorenzo, P., Piña-Sánchez, P. and Salcedo, M. 2007. Differentially expressed genes between high-risk human papillomavirus types in human cervical cancer cells. *Int. J. Gynecol. Cancer* 17: 484-491.
6. Yang, Y., Hou, J.Q., Qu, L.Y., Wang, G.Q., Ju, H.W., Zhao, Z.W., Yu, Z.H. and Yang, H.J. 2007. Differential expression of USP2, USP14 and UBE4A between ovarian serous cystadenocarcinoma and adjacent normal tissues. *Xi Bao Yu Fen Zi Mian Yi Xue Za Zhi* 23: 504-506.
7. Sakiyama, T., Fujita, H. and Tsubouchi, H. 2008. Autoantibodies against ubiquitination factor E4A (UBE4A) are associated with severity of Crohn's disease. *Inflamm. Bowel Dis.* 14: 310-317.

CHROMOSOMAL LOCATION

Genetic locus: UBE4A (human) mapping to 11q23.3; Ube4a (mouse) mapping to 9 A5.2.

SOURCE

UBE4A (G-20) is an affinity purified goat polyclonal antibody raised against a peptide mapping within an internal region of UBE4A of human origin.

PRODUCT

Each vial contains 200 µg IgG in 1.0 ml of PBS with < 0.1% sodium azide and 0.1% gelatin.

Blocking peptide available for competition studies, sc-54554 P, (100 µg peptide in 0.5 ml PBS containing < 0.1% sodium azide and 0.2% BSA).

APPLICATIONS

UBE4A (G-20) is recommended for detection of UBE4A of mouse, rat and human origin by Western Blotting (starting dilution 1:200, dilution range 1:100-1:1000), immunoprecipitation [1-2 µg per 100-500 µg of total protein (1 ml of cell lysate)], immunofluorescence (starting dilution 1:50, dilution range 1:50-1:500) and solid phase ELISA (starting dilution 1:30, dilution range 1:30-1:3000).

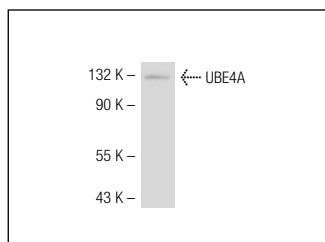
UBE4A (G-20) is also recommended for detection of UBE4A in additional species, including equine, canine, bovine and porcine.

Suitable for use as control antibody for UBE4A siRNA (h): sc-63181, UBE4A siRNA (m): sc-63182, UBE4A shRNA Plasmid (h): sc-63181-SH, UBE4A shRNA Plasmid (m): sc-63182-SH, UBE4A shRNA (h) Lentiviral Particles: sc-63181-V and UBE4A shRNA (m) Lentiviral Particles: sc-63182-V.

Molecular Weight of UBE4A: 125 kDa.

Positive Controls: K-562 whole cell lysate: sc-2203.

DATA



UBE4A (G-20): sc-54554. Western blot analysis of UBE4A expression in K-562 whole cell lysate.

STORAGE

Store at 4° C, ****DO NOT FREEZE****. Stable for one year from the date of shipment. Non-hazardous. No MSDS required.

RESEARCH USE

For research use only, not for use in diagnostic procedures.

MONOS
Satisfaction
Guaranteed

Try **UBE4A (B-6): sc-365904**, our highly recommended monoclonal alternative to UBE4A (G-20).