

NEDD8 (V-15): sc-5480

BACKGROUND

NEDD8 is a ubiquitin (Ub)-like molecule that shares 80% homology with ubiquitin, a protein known to modify and target various proteins for proteolytic degradation. NEDD8 and the corresponding yeast homolog RUB1 are activated by the E1 ubiquitin activating enzyme UBA2, which forms isopeptide linkages between thio esters. Similar to the Ub-mediated proteolytic pathway, NEDD8 is covalently coupled to an E3 Ub ligase by the E2 conjugating enzyme, UBC12. NEDD8 preferentially associates with the CUL-2 protein in the E3 ligase complex CBCVHL, which consists of cullin proteins associating with elongin B/C and the tumor suppressor F-box protein von Hippel Lindau (VHL). NEDD8 is predominantly localized to the nucleus and is highly expressed in adult heart and skeletal muscle. *In vitro* studies indicate that NEDD8 tetramers are also able to bind to the 26S proteasome, and that they assemble into complexes with conserved Ub-like moieties, suggesting that NEDD8 may regulate proteolysis of intracellular proteins similar to other Ub-mediated pathways.

CHROMOSOMAL LOCATION

Genetic locus: NEDD8 (human) mapping to 14q12; Nedd8 (mouse) mapping to 14 C3.

SOURCE

NEDD8 (V-15) is an affinity purified goat polyclonal antibody raised against a peptide mapping near the N-terminus of NEDD8 of human origin.

PRODUCT

Each vial contains 200 µg IgG in 1.0 ml of PBS with < 0.1% sodium azide and 0.1% gelatin.

Blocking peptide available for competition studies, sc-5480 P, (100 µg peptide in 0.5 ml PBS containing < 0.1% sodium azide and 0.2% BSA).

APPLICATIONS

NEDD8 (V-15) is recommended for detection of NEDD8 of mouse, rat and human origin by Western Blotting (starting dilution 1:200, dilution range 1:100-1:1000), immunoprecipitation [1-2 µg per 100-500 µg of total protein (1 ml of cell lysate)], immunofluorescence (starting dilution 1:50, dilution range 1:50-1:500), immunohistochemistry (including paraffin-embedded sections) (starting dilution 1:50, dilution range 1:50-1:500) and solid phase ELISA (starting dilution 1:30, dilution range 1:30-1:3000).

NEDD8 (V-15) is also recommended for detection of NEDD8 in additional species, including equine, canine, bovine and porcine.

Suitable for use as control antibody for NEDD8 siRNA (h): sc-36026, NEDD8 siRNA (m): sc-36027, NEDD8 shRNA Plasmid (h): sc-36026-SH, NEDD8 shRNA Plasmid (m): sc-36027-SH, NEDD8 shRNA (h) Lentiviral Particles: sc-36026-V and NEDD8 shRNA (m) Lentiviral Particles: sc-36027-V.

Molecular Weight of NEDD8 monomer: 6 kDa.

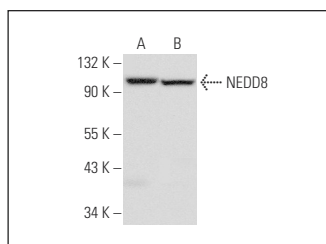
Molecular Weight of NEDD8-protein conjugate: 90 kDa.

Positive Controls: K-562 whole cell lysate: sc-2203, HL-60 whole cell lysate: sc-2209 or HT-1080 whole cell lysate: sc-364183.

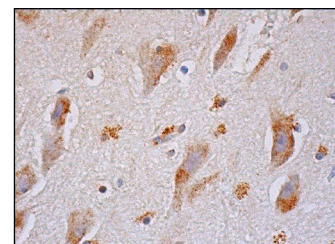
RECOMMENDED SECONDARY REAGENTS

To ensure optimal results, the following support (secondary) reagents are recommended: 1) Western Blotting: use donkey anti-goat IgG-HRP: sc-2020 (dilution range: 1:2000-1:100,000) or Cruz Marker™ compatible donkey anti-goat IgG-HRP: sc-2033 (dilution range: 1:2000-1:5000), Cruz Marker™ Molecular Weight Standards: sc-2035, TBS Blotto A Blocking Reagent: sc-2333 and Western Blotting Luminol Reagent: sc-2048. 2) Immunoprecipitation: use Protein A/G PLUS-Agarose: sc-2003 (0.5 ml agarose/2.0 ml). 3) Immunofluorescence: use donkey anti-goat IgG-FITC: sc-2024 (dilution range: 1:100-1:400) or donkey anti-goat IgG-TR: sc-2783 (dilution range: 1:100-1:400) with UltraCruz™ Mounting Medium: sc-24941. 4) Immunohistochemistry: use ImmunoCruz™: sc-2053 or ABC: sc-2023 goat IgG Staining Systems.

DATA



NEDD8 (V-15): sc-5480. Western blot analysis of NEDD8 expression in HT-1080 (A) and K-562 (B) whole cell lysates.



NEDD8 (V-15): sc-5480. Immunoperoxidase staining of formalin fixed, paraffin-embedded human cerebral cortex tissue showing cytoplasmic staining of neuronal cells and glial cells.

SELECT PRODUCT CITATIONS

- Boyer, L., et al. 2004. Rac GTPase instructs nuclear factor-κB activation by conveying the SCF complex and IκBα to the ruffling membranes. *Mol. Cell. Biol.* 15: 1124-1133.

STORAGE

Store at 4° C, **DO NOT FREEZE**. Stable for one year from the date of shipment. Non-hazardous. No MSDS required.

RESEARCH USE

For research use only, not for use in diagnostic procedures.

PROTOCOLS

See our web site at www.scbt.com or our catalog for detailed protocols and support products.



Try **NEDD8 (H-2): sc-373741**, our highly recommended monoclonal alternative to NEDD8 (V-15).