

MINK1 (P-15): sc-54966

BACKGROUND

MINK1 (misshapen-like kinase 1, mitogen-activated protein kinase kinase kinase kinase 6, GCK family kinase MINK) is a 1,332 amino acid protein encoded by the human gene MINK1. MINK1 belongs to the protein kinase superfamily, Ste Ser/Thr protein kinase family, Ste20 subfamily and contains one CNH domain and one protein kinase domain. MINK1 acts as a serine/threonine kinase and may play a role in the response to environmental stress. It appears to act upstream of the Jun N-terminal pathway and may play a role in the development of the brain. MINK1 is expressed in all tissues with highest expression found in the brain. Thymocytes that engage MHC-self peptide complexes with intermediate affinity are expanded in the thymus through a process of positive selection, whereas those that bind to these complexes with high affinity are eliminated through a process of negative selection. MINK1 is thought to be an essential component of the signaling element that couples the T cell receptor for negative, but not positive, selection.

REFERENCES

- Dan, I., Watanabe, N.M., Kobayashi, T., Yamashita-Suzuki, K., Fukagaya, Y., Kajikawa, E., Kimura, W.K., Nakashima, T.M., Matsumoto, K., Ninomiya-Tsuji, J. and Kusumi, A. 2000. Molecular cloning of MINK, a novel member of mammalian GCK family kinases, which is up-regulated during postnatal mouse cerebral development. *FEBS Lett.* 469: 19-23.
- Dan, I., Watanabe, N.M., Kajikawa, E., Ishida, T., Pandey, A. and Kusumi, A. 2002. Overlapping of MINK and CHRNE gene loci in the course of mammalian evolution. *Nucleic Acids Res.* 30: 2906-2910.
- Qu, K., Lu, Y., Lin, N., Singh, R., Xu, X., Payan, D.G. and Xu, D. 2004. Computational and experimental studies on human misshapen/NIK-related kinase MINK1. *Curr. Med. Chem.* 11: 569-582.
- Hu, Y., Leo, C., Yu, S., Huang, B.C., Wang, H., Shen, M., Luo, Y., Daniel-Issakani, S., Payan, D.G. and Xu, X. 2004. Identification and functional characterization of a novel human misshapen/Nck interacting kinase-related kinase, hMINK β . *J. Biol. Chem.* 279: 54387-54397.
- McCarty, N., Paust, S., Ikizawa, K., Dan, I., Li, X. and Cantor, H. 2004. Signaling by the kinase MINK is essential in the negative selection of autoreactive thymocytes. *Nat. Immunol.* 6: 65-72.
- Nicke, B., Bastien, J., Khanna, S.J., Warne, P.H., Cowling, V., Cook, S.J., Peters, G., Delpuech, O., Schulze, A., Berns, K., Mullenders, J., Beijersbergen, R.L., Bernards, R., Ganesan, T.S., Downward, J. and Hancock, D.C. 2005. Involvement of MINK, a Ste20 family kinase, in Ras oncogene-induced growth arrest in human ovarian surface epithelial cells. *Mol. Cell* 20: 673-685.

CHROMOSOMAL LOCATION

Genetic locus: MINK1 (human) mapping to 17p13.2; Mink1 (mouse) mapping to 11 B3.

SOURCE

MINK1 (P-15) is an affinity purified goat polyclonal antibody raised against a peptide mapping within an internal region of MINK1 of human origin.

PRODUCT

Each vial contains 200 μ g IgG in 1.0 ml of PBS with < 0.1% sodium azide and 0.1% gelatin.

Blocking peptide available for competition studies, sc-54966 P, (100 μ g peptide in 0.5 ml PBS containing < 0.1% sodium azide and 0.2% BSA).

APPLICATIONS

MINK1 (P-15) is recommended for detection of MINK1 of mouse, rat and human origin by Western Blotting (starting dilution 1:200, dilution range 1:100-1:1000), immunoprecipitation [1-2 μ g per 100-500 μ g of total protein (1 ml of cell lysate)], immunofluorescence (starting dilution 1:50, dilution range 1:50-1:500) and solid phase ELISA (starting dilution 1:30, dilution range 1:30-1:3000).

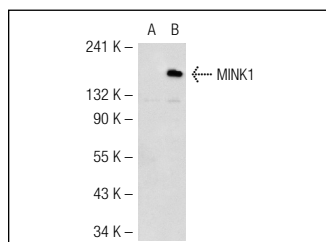
MINK1 (P-15) is also recommended for detection of MINK1 in additional species, including equine, bovine and porcine.

Suitable for use as control antibody for MINK1 siRNA (h): sc-62616, MINK1 siRNA (m): sc-62617, MINK1 shRNA Plasmid (h): sc-62616-SH, MINK1 shRNA Plasmid (m): sc-62617-SH, MINK1 shRNA (h) Lentiviral Particles: sc-62616-V and MINK1 shRNA (m) Lentiviral Particles: sc-62617-V.

Molecular Weight of MINK1: 150 kDa.

Positive Controls: MINK1 (h3): 293T Lysate: sc-171838.

DATA



MINK1 (P-15): sc-54966. Western blot analysis of MINK1 expression in non-transfected: sc-117752 (A) and human MINK1 transfected: sc-171838 (B) 293T whole cell lysates.

STORAGE

Store at 4° C, **DO NOT FREEZE**. Stable for one year from the date of shipment. Non-hazardous. No MSDS required.

RESEARCH USE

For research use only, not for use in diagnostic procedures.

PROTOCOLS

See our web site at www.scbt.com or our catalog for detailed protocols and support products.