

# Ribosomal Protein S20 (G-15): sc-55035

## BACKGROUND

Mammalian ribosomal proteins are encoded by multigene families that consist of processed pseudogenes and one functional intron-containing gene within their coding regions. Ribosomal Protein S20, also known as RPS20, is a 119 amino acid cytoplasmic protein that is a component of the 40S ribosomal subunit. Co-transcribed with the small nucleolar RNA gene U54, Ribosomal Protein S20 is a primary binding protein (it binds independently to its target protein) that interacts with both the 5' and 3' minor domains of 16S ribosomal RNA (rRNA). Through its interactions with 16S rRNA, Ribosomal Protein S20 is thought to play a key role in nucleating the assembly of the 30S ribosomal subunit. Like most ribosomal protein-coding genes, the gene encoding Ribosomal Protein S20 is dispersed throughout the genome and exists as multiple processed pseudogenes.

## REFERENCES

- Hermann-Le Denmat, S., Sipiczki, M. and Thuriaux, P. 1994. Suppression of yeast RNA polymerase III mutations by the URP2 gene encoding a protein homologous to the mammalian Ribosomal Protein S20. *J. Mol. Biol.* 240: 1-7.
- Vladimirov, S.N., Ivanov, A.V., Karpova, G.G., Musolyamov, A.K., Egorov, T.A., Thiede, B., Wittmann-Liebold, B. and Otto, A. 1996. Characterization of the human small-ribosomal-subunit proteins by N-terminal and internal sequencing, and mass spectrometry. *Eur. J. Biochem.* 239: 144-149.
- Coburn, G.A. and Mackie, G.A. 1998. Reconstitution of the degradation of the mRNA for Ribosomal Protein S20 with purified enzymes. *J. Mol. Biol.* 279: 1061-1074.
- Culver, G.M. and Noller, H.F. 1998. Directed hydroxyl radical probing of 16S ribosomal RNA in ribosomes containing Fe(II) tethered to Ribosomal Protein S20. *RNA* 4: 1471-1480.
- Grondek, J.F. and Culver, G.M. 2004. Assembly of the 30S ribosomal subunit: positioning Ribosomal Protein S13 in the S7 assembly branch. *RNA* 10: 1861-1866.
- Olsvik, P.A., Lie, K.K., Jordal, A.E., Nilsen, T.O. and Hordvik, I. 2005. Evaluation of potential reference genes in real-time RT-PCR studies of Atlantic salmon. *BMC Mol. Biol.* 6: 21.
- De Bortoli, M., Castellino, R.C., Lu, X.Y., Deyo, J., Sturla, L.M., Adesina, A.M., Perlaky, L., Pomeroy, S.L., Lau, C.C., Man, T.K., Rao, P.H. and Kim, J.Y. 2006. Medulloblastoma outcome is adversely associated with overexpression of EEF1D, RPL30, and RPS20 on the long arm of chromosome 8. *BMC Cancer* 6: 223.

## CHROMOSOMAL LOCATION

Genetic locus: RPS20 (human) mapping to 8q12.1; Rps20 (mouse) mapping to 4 A1.

## SOURCE

Ribosomal Protein S20 (G-15) is an affinity purified goat polyclonal antibody raised against a peptide mapping within an internal region of Ribosomal Protein S20 of human origin.

## PRODUCT

Each vial contains 200 µg IgG in 1.0 ml of PBS with < 0.1% sodium azide and 0.1% gelatin.

Blocking peptide available for competition studies, sc-55035 P, (100 µg peptide in 0.5 ml PBS containing < 0.1% sodium azide and 0.2% BSA).

## APPLICATIONS

Ribosomal Protein S20 (G-15) is recommended for detection of Ribosomal Protein S20 of mouse, rat and human origin by Western Blotting (starting dilution 1:200, dilution range 1:100-1:1000), immunoprecipitation [1-2 µg per 100-500 µg of total protein (1 ml of cell lysate)], immunofluorescence (starting dilution 1:50, dilution range 1:50-1:500) and solid phase ELISA (starting dilution 1:30, dilution range 1:30-1:3000).

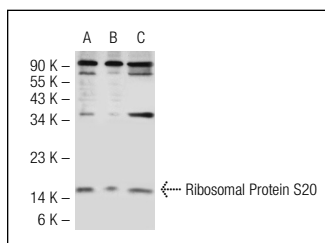
Ribosomal Protein S20 (G-15) is also recommended for detection of Ribosomal Protein S20 in additional species, including equine, canine, bovine, porcine and avian.

Suitable for use as control antibody for Ribosomal Protein S20 siRNA (h): sc-62942, Ribosomal Protein S20 siRNA (m): sc-62943, Ribosomal Protein S20 shRNA Plasmid (h): sc-62942-SH, Ribosomal Protein S20 shRNA Plasmid (m): sc-62943-SH, Ribosomal Protein S20 shRNA (h) Lentiviral Particles: sc-62942-V and Ribosomal Protein S20 shRNA (m) Lentiviral Particles: sc-62943-V.

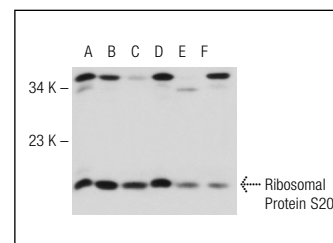
Molecular Weight of Ribosomal Protein S20: 13 kDa.

Positive Controls: Ribosomal Protein S20 (h): 293T Lysate: sc-111506, HeLa whole cell lysate: sc-2200 or DU 145 cell lysate: sc-2268.

## DATA



Ribosomal Protein S20 (G-15): sc-55035. Western blot analysis of Ribosomal Protein S20 expression in non-transfected 293T: sc-117752 (A), human Ribosomal Protein S20 transfected 293T: sc-111506 (B) and HeLa (C) whole cell lysates.



Ribosomal Protein S20 (G-15): sc-55035. Western blot analysis of Ribosomal Protein S20 expression in DU 145 (A), HeLa (B), TE 671 (C), JAR (D), Hep G2 (E) and HUV-EC-C (F) whole cell lysates.

## STORAGE

Store at 4° C, \*\*DO NOT FREEZE\*\*. Stable for one year from the date of shipment. Non-hazardous. No MSDS required.

## RESEARCH USE

For research use only, not for use in diagnostic procedures.