

Ran BP-4 (N-15): sc-55280

BACKGROUND

The small Ras-related protein Ran, also called TC4, is a nuclear localized GTPase implicated in a diverse array of cellular processes including DNA replication, entry into and exit from mitosis, and the transport of RNA and proteins through the nuclear pore complex. Like Ras, active Ran GTP and inactive Ran GDP levels are tightly regulated by guanine nucleotide exchange factors (GEFs) and GTPase activating proteins (GAPs). The abundant GEF, RCC1 (regulator of chromosome condensation 1), increases the rate at which Ran exchanges GDP for GTP. Ran BP-4 (Ran binding protein 4) also known as importin 4, is a nuclear transport receptor and chaperone for ribosomal protein S3A. It mediates active transport through nuclear pore complexes. It is also responsible for ligand-independent nuclear translocation of VDR (vitamin D receptor).

REFERENCES

1. Scheffzek, K., Klebe, C., Fritz-Wolf, K., Kabsch, W. and Wittinghofer, A. 1995. Crystal structure of the nuclear Ras-related protein Ran in its GDP-bound form. *Nature* 374: 378-381.
2. Beddow, A.L., Richards, S.A., Orem, N.R. and Macara, I.G. 1995. The Ran/TC4 GTPase-binding domain: identification by expression cloning and characterization of a conserved sequence motif. *Proc. Natl. Acad. Sci. USA* 92: 3328-3332.
3. Ren, M., Villamarin, A., Shih, A., Coutavas, E., Moore, M.S., LoCurcio, M., Clarke, V., Oppenheim, J.D., D'Eustachio, P. and Rush, M.G. 1995. Separate domains of the Ran GTPase interact with different factors to regulate nuclear protein import and RNA processing. *Mol. Cell. Biol.* 15: 2117-2124.
4. Bischoff, F.R., Krebber, H., Smirnova, E., Dong, W. and Ponstingl, H. 1995. Co-activation of Ran GTPase and inhibition of GTP dissociation by Ran GTP binding protein Ran BP-1. *EMBO J.* 14: 705-715.
5. Nemerlut, M.E., Lindsay, M.E., Brownawell, A.M. and Macara, I.G. 2002. Ran binding protein 3 links CRM1 to the Ran guanine nucleotide exchange factor. *J. Biol. Chem.* 277: 17385-17388.
6. Jäkel, S., Mingot, J.M., Schwarzmaier, P., Hartmann, E. and Görlich, D. 2002. Importins fulfill a dual function as nuclear import receptors and cytoplasmic chaperones for exposed basic domains. *EMBO J.* 21: 377-386.

CHROMOSOMAL LOCATION

Genetic locus: IPO4 (human) mapping to 14q12.

SOURCE

Ran BP-4 (N-15) is an affinity purified goat polyclonal antibody raised against a peptide mapping within an internal region of Ran BP-4 of human origin.

PRODUCT

Each vial contains 200 µg IgG in 1.0 ml of PBS with < 0.1% sodium azide and 0.1% gelatin.

Blocking peptide available for competition studies, sc-55280 P, (100 µg peptide in 0.5 ml PBS containing < 0.1% sodium azide and 0.2% BSA).

APPLICATIONS

Ran BP-4 (N-15) is recommended for detection of Ran BP-4 of human origin by Western Blotting (starting dilution 1:200, dilution range 1:100-1:1000), immunofluorescence (starting dilution 1:50, dilution range 1:50-1:500) and solid phase ELISA (starting dilution 1:30, dilution range 1:30-1:3000).

Ran BP-4 (N-15) is also recommended for detection of Ran BP-4 in additional species, including equine, bovine and porcine.

Suitable for use as control antibody for Ran BP-4 siRNA (h): sc-62922, Ran BP-4 shRNA Plasmid (h): sc-62922-SH and Ran BP-4 shRNA (h) Lentiviral Particles: sc-62922-V.

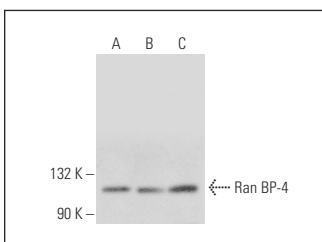
Molecular Weight of Ran BP-4: 119 kDa.

Positive Controls: HeLa whole cell lysate: sc-2200, A549 cell lysate: sc-2413 or Hep G2 cell lysate: sc-2227.

RECOMMENDED SECONDARY REAGENTS

To ensure optimal results, the following support (secondary) reagents are recommended: 1) Western Blotting: use donkey anti-goat IgG-HRP: sc-2020 (dilution range: 1:2000-1:100,000) or Cruz Marker™ compatible donkey anti-goat IgG-HRP: sc-2033 (dilution range: 1:2000-1:5000), Cruz Marker™ Molecular Weight Standards: sc-2035, TBS Blotto A Blocking Reagent: sc-2333 and Western Blotting Luminol Reagent: sc-2048. 2) Immunofluorescence: use donkey anti-goat IgG-FITC: sc-2024 (dilution range: 1:100-1:400) or donkey anti-goat IgG-TR: sc-2783 (dilution range: 1:100-1:400) with UltraCruz™ Mounting Medium: sc-24941.

DATA



Ran BP-4 (N-15): sc-55280. Western blot analysis of Ran BP-4 expression in Hep G2 (A), A549 (B) and HeLa (C) whole cell lysates.

STORAGE

Store at 4° C, **DO NOT FREEZE**. Stable for one year from the date of shipment. Non-hazardous. No MSDS required.

RESEARCH USE

For research use only, not for use in diagnostic procedures.

PROTOCOLS

See our web site at www.scbt.com or our catalog for detailed protocols and support products.