

SPPase1 (K-16): sc-55306

BACKGROUND

Sphingosine-1-phosphate (S1P) is a lipid that functions in a variety of intracellular and extracellular biological events. The intracellular activity of S1P is regulated by its state of phosphorylation and is therefore controlled by SPP kinases (SphKs) and S1P phosphatases (SPPases). The mammalian SPPases belong to the type 2 lipid phosphate phosphatase family of N-ethylmaleimide insensitive, magnesium-independent, multi-pass membrane proteins. Characteristic of their family, SPPases contain three conserved motifs that comprise the active site of the enzyme: the SXH motif, the KXXXXXXRP motif and the SRXXXXHXXD motif. SPPase1, also known as SGPP1 or SPP1, localizes to the membrane of the endoplasmic reticulum (ER) and is ubiquitously expressed with highest levels found in kidney and placenta. SPPase1 specifically dephosphorylates S1P, dihydro-S1P and phyto-S1P. The overexpression of SPPases can lead to an elevation in the levels of ceramide and can induce apoptosis.

REFERENCES

- Mandala, S.M. 2001. Sphingosine-1-phosphate phosphatases. *Prostaglandins* 64: 143-156.
- Cuvillier, O. 2002. Sphingosine in apoptosis signaling. *Biochim. Biophys. Acta* 1585: 153-162.
- Le Stunff, H., Galve-Roperh, I., Peterson, C., Milstien, S. and Spiegel, S. 2002. Sphingosine-1-phosphate phosphohydrolase in regulation of sphingolipid metabolism and apoptosis. *J. Cell Biol.* 158: 1039-1049.
- Ogawa, C., Kihara, A., Gokoh, M. and Igarashi, Y. 2003. Identification and characterization of a novel human sphingosine-1-phosphate phosphohydrolase, hSPP2. *J. Biol. Chem.* 278: 1268-1272.
- Johnson, K.R., Johnson, K.Y., Becker, K.P., Bielawski, J., Mao, C. and Obeid, L.M. 2003. Role of human sphingosine-1-phosphate phosphatase 1 in the regulation of intra- and extracellular sphingosine-1-phosphate levels and cell viability. *J. Biol. Chem.* 278: 34541-34547.
- Saba, J.D. and Hla, T. 2004. Point-counterpoint of sphingosine-1-phosphate metabolism. *Circ. Res.* 94: 724-734.
- Pyne, S., Kong, K.C. and Darroch, P.I. 2004. Lysophosphatidic acid and sphingosine-1-phosphate biology: the role of lipid phosphate phosphatases. *Semin. Cell Dev. Biol.* 15: 491-501.
- Le Stunff, H., Mikami, A., Giussani, P., Hobson, J.P., Jolly, P.S., Milstien, S. and Spiegel, S. 2004. Role of sphingosine-1-phosphate phosphatase 1 in epidermal growth factor-induced chemotaxis. *J. Biol. Chem.* 279: 34290-34297.
- Wendler, C.C. and Rivkees, S.A. 2006. Sphingosine-1-phosphate inhibits cell migration and endothelial to mesenchymal cell transformation during cardiac development. *Dev. Biol.* 291: 264-277.

CHROMOSOMAL LOCATION

Genetic locus: SGPP1 (human) mapping to 14q23.2; Sgpp1 (mouse) mapping to 12 C3.

RESEARCH USE

For research use only, not for use in diagnostic procedures.

SOURCE

SPPase1 (K-16) is an affinity purified goat polyclonal antibody raised against a peptide mapping near the C-terminus of SPPase1 of human origin.

PRODUCT

Each vial contains 200 µg IgG in 1.0 ml of PBS with < 0.1% sodium azide and 0.1% gelatin.

Blocking peptide available for competition studies, sc-55306 P, (100 µg peptide in 0.5 ml PBS containing < 0.1% sodium azide and 0.2% BSA).

APPLICATIONS

SPPase1 (K-16) is recommended for detection of SPPase1 of mouse, rat and human origin by Western Blotting (starting dilution 1:200, dilution range 1:100-1:1000), immunoprecipitation [1-2 µg per 100-500 µg of total protein (1 ml of cell lysate)], immunofluorescence (starting dilution 1:50, dilution range 1:50-1:500), immunohistochemistry (including paraffin-embedded sections) (starting dilution 1:50, dilution range 1:50-1:500) and solid phase ELISA (starting dilution 1:30, dilution range 1:30-1:3000).

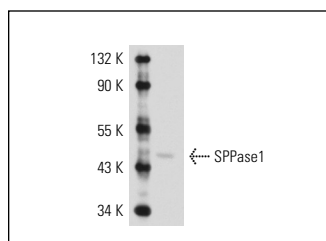
SPPase1 (K-16) is also recommended for detection of SPPase1 in additional species, including equine, canine, bovine, porcine and avian.

Suitable for use as control antibody for SPPase1 siRNA (h): sc-63060, SPPase1 siRNA (m): sc-63061, SPPase1 shRNA Plasmid (h): sc-63060-SH, SPPase1 shRNA Plasmid (m): sc-63061-SH, SPPase1 shRNA (h) Lentiviral Particles: sc-63060-V and SPPase1 shRNA (m) Lentiviral Particles: sc-63061-V.

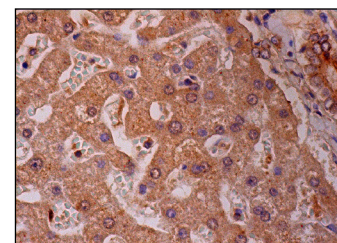
Molecular Weight of SPPase1: 49 kDa.

Positive Controls: EOC 20 whole cell lysate: sc-364187.

DATA



SPPase1 (K-16): sc-55306. Western blot analysis of SPPase1 expression in EOC 20 whole cell lysate.



SPPase1 (K-16): sc-55306. Immunoperoxidase staining of formalin fixed, paraffin-embedded human liver tissue showing cytoplasmic staining of hepatocytes and bile duct cells.

STORAGE

Store at 4° C, **DO NOT FREEZE**. Stable for one year from the date of shipment. Non-hazardous. No MSDS required.

PROTOCOLS

See our web site at www.scbt.com or our catalog for detailed protocols and support products.