

## TIP30 (E-16): sc-55343

### BACKGROUND

TIP30 (30 kDa HIV-1 TAT-interacting protein), also known as HTATIP2 (HIV-1 TAT-interactive protein 2) or CC3, is a ubiquitously expressed protein that functions as an oxidoreductase. It acts as a tumor suppressor participating in metabolic suppression, inhibition of angiogenesis and induction of apoptosis. TIP30 interacts with the ER $\alpha$ -interacting co-activator NCoA-5 and functions to regulate liganded and unliganded ER $\alpha$ -mediated c-Myc transcription. More specifically, when overexpressed TIP30 represses c-Myc transcription mediated by ER $\alpha$ , while the deficiency of TIP30 leads to an increase in c-Myc transcription. In addition, TIP30 interacts with the activation domain of HIV-1 TAT and enhances its transcription by phosphorylating RNA polymerase II (Pol II). Defects in TIP30 are associated with hepatocellular carcinomas and apoptotic resistant tumor cells, suggesting a potential use for TIP30 in antitumor therapy.

### CHROMOSOMAL LOCATION

Genetic locus: HTATIP2 (human) mapping to 11p15.1; Htatip2 (mouse) mapping to 7 B5.

### SOURCE

TIP30 (E-16) is an affinity purified goat polyclonal antibody raised against a peptide mapping within an internal region of TIP30 of human origin.

### PRODUCT

Each vial contains 200  $\mu$ g IgG in 1.0 ml of PBS with < 0.1% sodium azide and 0.1% gelatin.

Blocking peptide available for competition studies, sc-55343 P, (100  $\mu$ g peptide in 0.5 ml PBS containing < 0.1% sodium azide and 0.2% BSA).

### STORAGE

Store at 4° C, **\*\*DO NOT FREEZE\*\***. Stable for one year from the date of shipment. Non-hazardous. No MSDS required.

### APPLICATIONS

TIP30 (E-16) is recommended for detection of TIP30 of mouse, rat and human origin by Western Blotting (starting dilution 1:200, dilution range 1:100-1:1000), immunoprecipitation [1-2  $\mu$ g per 100-500  $\mu$ g of total protein (1 ml of cell lysate)], immunofluorescence (starting dilution 1:50, dilution range 1:50-1:500), immunohistochemistry (including paraffin-embedded sections) (starting dilution 1:50, dilution range 1:50-1:500) and solid phase ELISA (starting dilution 1:30, dilution range 1:30-1:3000).

TIP30 (E-16) is also recommended for detection of TIP30 in additional species, including equine, canine, bovine and porcine.

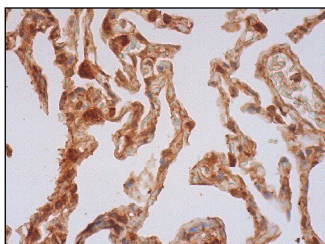
Suitable for use as control antibody for TIP30 siRNA (h): sc-63131, TIP30 siRNA (m): sc-63132, TIP30 shRNA Plasmid (h): sc-63131-SH, TIP30 shRNA Plasmid (m): sc-63132-SH, TIP30 shRNA (h) Lentiviral Particles: sc-63131-V and TIP30 shRNA (m) Lentiviral Particles: sc-63132-V.

Molecular Weight of TIP30: 30 kDa.

### RECOMMENDED SECONDARY REAGENTS

To ensure optimal results, the following support (secondary) reagents are recommended: 1) Western Blotting: use donkey anti-goat IgG-HRP: sc-2020 (dilution range: 1:2000-1:100,000) or Cruz Marker™ compatible donkey anti-goat IgG-HRP: sc-2033 (dilution range: 1:2000-1:5000), Cruz Marker™ Molecular Weight Standards: sc-2035, TBS Blotto A Blocking Reagent: sc-2333 and Western Blotting Luminol Reagent: sc-2048. 2) Immunoprecipitation: use Protein A/G PLUS-Agarose: sc-2003 (0.5 ml agarose/2.0 ml). 3) Immunofluorescence: use donkey anti-goat IgG-FITC: sc-2024 (dilution range: 1:100-1:400) or donkey anti-goat IgG-TR: sc-2783 (dilution range: 1:100-1:400) with UltraCruz™ Mounting Medium: sc-24941. 4) Immunohistochemistry: use ImmunoCruz™: sc-2053 or ABC: sc-2023 goat IgG Staining Systems.

### DATA



TIP30 (E-16): sc-55343. Immunoperoxidase staining of formalin fixed, paraffin-embedded human lung tissue showing nuclear and cytoplasmic staining of pneumocytes and macrophages.

### RESEARCH USE

For research use only, not for use in diagnostic procedures.

### PROTOCOLS

See our web site at [www.scbt.com](http://www.scbt.com) or our catalog for detailed protocols and support products.

**MONOS**  
Satisfaction  
Guaranteed

Try **TIP30 (F-10): sc-515728**, our highly recommended monoclonal alternative to TIP30 (E-16).