

Centaurin α 2 (S-20): sc-55360

BACKGROUND

The ADP-ribosylation factor (ARF) family of small GTP-binding proteins are involved in vesicular transport regulation and in controlling cytoskeletal organization and cell adhesion. The Centaurin GTPase-activating protein family comprise a subset of ARF regulatory molecules that transduce PI 3-kinase activation into coordinated control of ARF-dependent pathways. This family includes ASAP1, ACAP1, ACAP2, AGAP1, ARAP1, ARAP2, Centaurin α 1, Centaurin γ 3 and the recently discovered Centaurin α 2. Expressed in a wide variety of tissues such as fat, heart and skeletal muscle, Centaurin α 2 is thought to negatively regulate ARF-mediated Actin rearrangement by binding activated PI 3-kinase. Although the exact function of Centaurin α 2 is not yet known, its high sequence similarity with Centaurin α 1 suggests that it may also act as an ARF6 GTPase.

REFERENCES

- Dubois, T., Kerai, P., Zemlickova, E., Howell, S., Jackson, T.R., Venkateswarlu, K., Cullen, P.J., Theibert, A.B., Larose, L., Roach, P.J. and Aitken, A. 2001. Casein kinase I associates with members of the Centaurin- α family of phosphatidylinositol 3,4,5-trisphosphate-binding proteins. *J. Biol. Chem.* 276: 18757-18764.
- Whitley, P., Gibbard, A.M., Koumanov, F., Oldfield, S., Kilgour, E.E., Prestwich, G.D. and Holman, G.D. 2002. Identification of Centaurin- α 2: a phosphatidylinositide-binding protein present in fat, heart and skeletal muscle. *Eur. J. Cell Biol.* 81: 222-230.
- Hawadle, M.A., Folarin, N., Martin, R. and Jackson, T.R. 2002. Cytohesins and centaurins control subcellular trafficking of macromolecular signaling complexes: regulation by phosphoinositides and ADP-ribosylation factors. *Biol. Res.* 35: 247-265.
- Hanck, T., Stricker, R., Sedehizade, F. and Reiser, G. 2003. Identification of gene structure and subcellular localization of human Centaurin α 2, and p42IP4, a family of two highly homologous, Ins 1,3,4,5-P4-/PtdIns 3,4,5-P3-binding, adapter proteins. *J. Neurochem.* 88: 326-336.
- Thacker, E., Kearns, B., Chapman, C., Hammond, J., Howell, A. and Theibert, A. 2005. The ARF6 GAP Centaurin α -1 is a neuronal Actin-binding protein which also functions via GAP-independent activity to regulate the Actin cytoskeleton. *Eur. J. Cell Biol.* 83: 541-554.
- Venturin, M., Bentivegna, A., Moroni, R., Larizza, L. and Riva, P. 2005. Evidence by expression analysis of candidate genes for congenital heart defects in the NF1 microdeletion interval. *Ann. Hum. Genet.* 69: 508-516.
- Venkateswarlu, K., Bandom, K.G. and Yun, H. 2007. PI 3-kinase-dependent membrane recruitment of Centaurin- α 2 is essential for its effect on ARF6-mediated Actin cytoskeleton reorganisation. *J. Cell Sci.* 120: 792-801.

CHROMOSOMAL LOCATION

Genetic locus: Centa2 (mouse) mapping to 11 B5.

STORAGE

Store at 4° C, ****DO NOT FREEZE****. Stable for one year from the date of shipment. Non-hazardous. No MSDS required.

SOURCE

Centaurin α 2 (S-20) is an affinity purified goat polyclonal antibody raised against a peptide mapping near the C-terminus of Centaurin α 2 of mouse origin.

PRODUCT

Each vial contains 200 μ g IgG in 1.0 ml of PBS with < 0.1% sodium azide and 0.1% gelatin.

Blocking peptide available for competition studies, sc-55360 P, (100 μ g peptide in 0.5 ml PBS containing < 0.1% sodium azide and 0.2% BSA).

APPLICATIONS

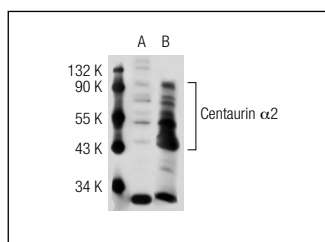
Centaurin α 2 (S-20) is recommended for detection of Centaurin α 2 of mouse and rat origin by Western Blotting (starting dilution 1:200, dilution range 1:100-1:1000), immunoprecipitation [1-2 μ g per 100-500 μ g of total protein (1 ml of cell lysate)], immunofluorescence (starting dilution 1:50, dilution range 1:50-1:500) and solid phase ELISA (starting dilution 1:30, dilution range 1:30-1:3000).

Centaurin α 2 (S-20) is also recommended for detection of Centaurin α 2 in additional species, including equine, canine and bovine.

Suitable for use as control antibody for Centaurin α 2 siRNA (m): sc-62093; and as shRNA Plasmid control antibody for Centaurin α 2 shRNA Plasmid (m): sc-62093-SH.

Molecular Weight of Centaurin α 2: 44 kDa.

DATA



Centaurin α 2 (S-20): sc-55360. Western blot analysis of Centaurin α 2 expression in non-transfected: sc-117752 (A) and human Centaurin α 2 transfected: sc-115111 (B) 293T whole cell lysates.

RESEARCH USE

For research use only, not for use in diagnostic procedures.

PROTOCOLS

See our web site at www.scbt.com or our catalog for detailed protocols and support products.