

# WTAP (C-20): sc-55438

## BACKGROUND

Wilms' tumor (WT) is an embryonal malignancy of the kidney that affects 1 in 10,000 infants and is observed in both sporadic and inherited forms. The Wilms' tumor protein (WT1) binds the DNA sequence GCGGGGCG, a recognition element common to the early growth response (Egr) family of Zn<sup>2+</sup> finger transcriptional activators, and functions as a transcriptional repressor. WTAP (Wilms' tumor 1-associating protein) is a ubiquitously expressed nuclear protein that interacts with WT1 and may be involved in regulating mRNA splicing. WTAP is found in nuclear speckles where it regulates the G<sub>2</sub>/M cell cycle transition by binding to the 3' UTR of cyclin A2, thus enhancing its stability. Additionally, WTAP inhibits expression of WT1 target genes and is able to impair the ability of WT1 to bind DNA. Two isoforms of WTAP exist due to alternative splicing events.

## CHROMOSOMAL LOCATION

Genetic locus: WTAP (human) mapping to 6q25.3; Wtap (mouse) mapping to 17 A1.

## SOURCE

WTAP (C-20) is an affinity purified goat polyclonal antibody raised against a peptide mapping at the C-terminus of WTAP of human origin.

## PRODUCT

Each vial contains 200 µg IgG in 1.0 ml of PBS with < 0.1% sodium azide and 0.1% gelatin.

Blocking peptide available for competition studies, sc-55438 P, (100 µg peptide in 0.5 ml PBS containing < 0.1% sodium azide and 0.2% BSA).

## STORAGE

Store at 4° C, **\*\*DO NOT FREEZE\*\***. Stable for one year from the date of shipment. Non-hazardous. No MSDS required.

## APPLICATIONS

WTAP (C-20) is recommended for detection of WTAP of mouse, rat and human origin by Western Blotting (starting dilution 1:200, dilution range 1:100-1:1000), immunoprecipitation [1-2 µg per 100-500 µg of total protein (1 ml of cell lysate)], immunofluorescence (starting dilution 1:50, dilution range 1:50-1:500) and solid phase ELISA (starting dilution 1:30, dilution range 1:30-1:3000).

WTAP (C-20) is also recommended for detection of WTAP in additional species, including equine, canine, bovine, porcine and avian.

Suitable for use as control antibody for WTAP siRNA (h): sc-63224, WTAP siRNA (m): sc-63225, WTAP shRNA Plasmid (h): sc-63224-SH, WTAP shRNA Plasmid (m): sc-63225-SH, WTAP shRNA (h) Lentiviral Particles: sc-63224-V and WTAP shRNA (m) Lentiviral Particles: sc-63225-V.

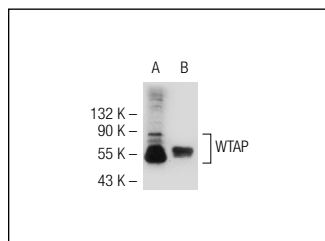
Molecular Weight of WTAP: 47 kDa.

Positive Controls: Jurkat nuclear extract: sc-2132 or K-562 nuclear extract: sc-2130.

## RECOMMENDED SECONDARY REAGENTS

To ensure optimal results, the following support (secondary) reagents are recommended: 1) Western Blotting: use donkey anti-goat IgG-HRP: sc-2020 (dilution range: 1:2000-1:100,000) or Cruz Marker™ compatible donkey anti-goat IgG-HRP: sc-2033 (dilution range: 1:2000-1:5000), Cruz Marker™ Molecular Weight Standards: sc-2035, TBS Blotto A Blocking Reagent: sc-2333 and Western Blotting Luminol Reagent: sc-2048. 2) Immunoprecipitation: use Protein A/G PLUS-Agarose: sc-2003 (0.5 ml agarose/2.0 ml). 3) Immunofluorescence: use donkey anti-goat IgG-FITC: sc-2024 (dilution range: 1:100-1:400) or donkey anti-goat IgG-TR: sc-2783 (dilution range: 1:100-1:400) with UltraCruz™ Mounting Medium: sc-24941.

## DATA



WTAP (C-20): sc-55438. Western blot analysis of WTAP expression in K-562 (A) and Jurkat (B) nuclear extracts.

## RESEARCH USE

For research use only, not for use in diagnostic procedures.

## PROTOCOLS

See our web site at [www.scbt.com](http://www.scbt.com) or our catalog for detailed protocols and support products.

**MONOS**  
Satisfaction  
Guaranteed

Try **WTAP (D-7): sc-374280** or **WTAP (C-12): sc-166931**, our highly recommended monoclonal alternatives to WTAP (C-20).