

epsin 1 (G-11): sc-55564



The Power to Question

BACKGROUND

Epsin 1 (EPN1) is an endocytic accessory protein with significant similarity to the *Xenopus* mitotic phosphoprotein MP90. Epsin 1 interacts with Eps15 (the α subunit of the Clathrin adaptor AP2), Clathrin and other accessory proteins. The mitotic phosphorylation of these proteins may be one of the mechanisms by which the invagination of Clathrin-coated pits is blocked in mitosis. Both epsin and Eps15, like other cytosolic components of the synaptic vesicle endocytic machinery, undergo constitutive phosphorylation and depolarization-dependent dephosphorylation in nerve terminals. Epsin 1 also contributes to the mechanism of Clathrin-vesicle-dependent endocytosis. The human Epsin 1 protein contains an epsin N-terminal homology (ENTH) region and a single Clathrin-binding (LVDLD) motif. Epsin 1 localizes to the leading edge of a vesicular coated pit where the membrane is being actively bent.

REFERENCES

- Chen, H., et al. 1998. Epsin is an EH-domain-binding protein implicated in clathrin-mediated endocytosis. *Nature* 394: 793-797.
- Rosenthal, J.A., et al. 1999. The epsins define a family of proteins that interact with components of the clathrin coat and contain a new protein module. *J. Biol. Chem.* 274: 33959-33965.
- Morinaka, K., et al. 1999. Epsin binds to the EH domain of POB1 and regulates receptor-mediated endocytosis. *Oncogene* 18: 5915-5922.
- Drake, M.T., et al. 2000. Epsin binds to clathrin by associating directly with the clathrin-terminal domain. Evidence for cooperative binding through two discrete sites. *J. Biol. Chem.* 275: 6479-6489.
- Oldham, C.E., et al. 2002. The ubiquitin-interacting motifs target the endocytic adaptor protein epsin for ubiquitination. *Curr. Biol.* 12: 1112-1116.
- Ford, M.G., et al. 2002. Curvature of clathrin-coated pits driven by epsin. *Nature* 419: 361-366.
- Wendland, B. 2002. Epsins: adaptors in endocytosis? *Nat. Rev. Mol. Cell Biol.* 3: 971-977.
- Stahelin, R.V., et al. 2003. Contrasting membrane interaction mechanisms of AP180 N-terminal homology (ANTH) and epsin N-terminal homology (ENTH) domains. *J. Biol. Chem.* 278: 28993-28999.

CHROMOSOMAL LOCATION

Genetic locus: EPN1 (human) mapping to 19q13.42; Epn1 (mouse) mapping to 7 A1.

SOURCE

epsin 1 (G-11) is a mouse monoclonal antibody raised against amino acids 311-440 of epsin 1 of human origin.

PRODUCT

Each vial contains 200 μ g IgG₁ kappa light chain in 1.0 ml of PBS with < 0.1% sodium azide and 0.1% gelatin.

APPLICATIONS

epsin 1 (G-11) is recommended for detection of epsin 1 of mouse, rat and human origin by Western Blotting (starting dilution 1:1000, dilution range 1:1000-1:5000), immunoprecipitation [1-2 μ g per 100-500 μ g of total protein (1 ml of cell lysate)], immunofluorescence (starting dilution 1:50, dilution range 1:50-1:500), immunohistochemistry (including paraffin-embedded sections) (starting dilution 1:50, dilution range 1:50-1:500) and solid phase ELISA (starting dilution 1:30, dilution range 1:30-1:3000).

Suitable for use as control antibody for epsin 1 siRNA (h): sc-35323, epsin 1 siRNA (m): sc-35324, epsin 1 shRNA Plasmid (h): sc-35323-SH, epsin 1 shRNA Plasmid (m): sc-35324-SH, epsin 1 shRNA (h) Lentiviral Particles: sc-35323-V and epsin 1 shRNA (m) Lentiviral Particles: sc-35324-V.

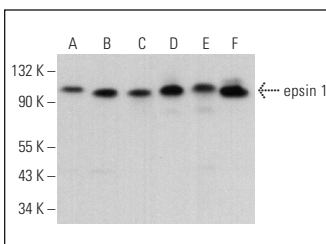
Molecular Weight of epsin 1: 94 kDa.

Positive Controls: COLO 205 whole cell lysate: sc-364177, L6 whole cell lysate: sc-364196 or Neuro-2A whole cell lysate: sc-364185.

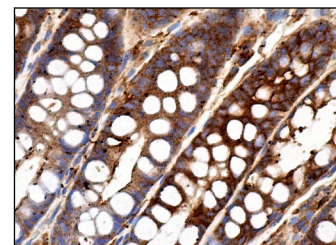
RECOMMENDED SUPPORT REAGENTS

To ensure optimal results, the following support reagents are recommended: 1) Western Blotting: use m-IgG κ BP-HRP: sc-516102 or m-IgG κ BP-HRP (Cruz Marker): sc-516102-CM (dilution range: 1:1000-1:10000), Cruz Marker™ Molecular Weight Standards: sc-2035, UltraCruz® Blocking Reagent: sc-516214 and Western Blotting Luminol Reagent: sc-2048. 2) Immunoprecipitation: use Protein A/G PLUS-Agarose: sc-2003 (0.5 ml agarose/2.0 ml). 3) Immunofluorescence: use m-IgG κ BP-FITC: sc-516140 or m-IgG κ BP-PE: sc-516141 (dilution range: 1:50-1:200) with UltraCruz® Mounting Medium: sc-24941 or UltraCruz® Hard-set Mounting Medium: sc-359850. 4) Immunohistochemistry: use m-IgG κ BP-HRP: sc-516102 with DAB, 50X: sc-24982 and Immunohistomount: sc-45086, or Organo/Limonene Mount: sc-45087.

DATA



epsin 1 (G-11): sc-55564. Western blot analysis of epsin 1 expression in NIH/3T3 (A), Neuro-2A (B), EOC 20 (C), L6 (D), SH-SY5Y (E) and COLO 205 (F) whole cell lysates.



epsin 1 (G-11): sc-55564. Immunoperoxidase staining of formalin fixed, paraffin-embedded human rectum tissue showing membrane and cytoplasmic staining of glandular cells.

STORAGE

Store at 4° C, **DO NOT FREEZE**. Stable for one year from the date of shipment. Non-hazardous. No MSDS required.

RESEARCH USE

For research use only, not for use in diagnostic procedures.