

# SAHH (N-20): sc-55758

## BACKGROUND

SAHH (S-adenosylhomocysteine hydrolase), also known as AHCY, is a 432 amino acid cytoplasmic protein that localizes to the melanosome, a melanin-containing organelle. An essential component of amino acid biosynthesis, SAHH catalyzes the reversible hydrolysis of S-adenosylhomocysteine (SAH) to produce adenosine and L-homocysteine. Through its catalytic activity, SAHH regulates the intracellular levels of SAH and may play a key role in controlling methyltransferase reactions. SAHH exists as a homotetramer that can bind one NAD per subunit and is involved in the activated methyl cycle (a reaction in which the methyl group of methionine is activated by the formation of S-adenosylmethionine). Defects in the gene encoding SAHH result in elevated levels of methionine which cause hypermethioninemia, a disease characterized by sluggishness, muscle weakness and liver problems.

## CHROMOSOMAL LOCATION

Genetic locus: AHCY (human) mapping to 20q11.22; Ahcy (mouse) mapping to 2 H1.

## SOURCE

SAHH (N-20) is an affinity purified goat polyclonal antibody raised against a peptide mapping near the N-terminus of SAHH of human origin.

## PRODUCT

Each vial contains 200 µg IgG in 1.0 ml of PBS with < 0.1% sodium azide and 0.1% gelatin.

Blocking peptide available for competition studies, sc-55758 P, (100 µg peptide in 0.5 ml PBS containing < 0.1% sodium azide and 0.2% BSA).

## STORAGE

Store at 4° C, **\*\*DO NOT FREEZE\*\***. Stable for one year from the date of shipment. Non-hazardous. No MSDS required.

## APPLICATIONS

SAHH (N-20) is recommended for detection of S-adenosyl-L-homocysteine hydrolase of mouse, rat and human origin by Western Blotting (starting dilution 1:200, dilution range 1:100-1:1000), immunoprecipitation [1-2 µg per 100-500 µg of total protein (1 ml of cell lysate)], immunofluorescence (starting dilution 1:50, dilution range 1:50-1:500) and solid phase ELISA (starting dilution 1:30, dilution range 1:30-1:3000).

SAHH (N-20) is also recommended for detection of S-adenosyl-L-homocysteine hydrolase in additional species, including equine, canine, bovine and porcine.

Suitable for use as control antibody for SAHH siRNA (h): sc-62972, SAHH siRNA (m): sc-62973, SAHH shRNA Plasmid (h): sc-62972-SH, SAHH shRNA Plasmid (m): sc-62973-SH, SAHH shRNA (h) Lentiviral Particles: sc-62972-V and SAHH shRNA (m) Lentiviral Particles: sc-62973-V.

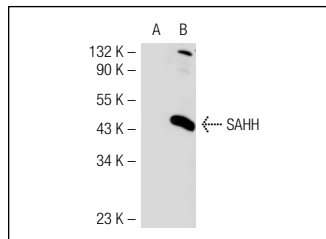
Molecular Weight of SAHH: 48 kDa.

Positive Controls: SAHH (m): 293T Lysate: sc-127504, A549 cell lysate: sc-2413 or HeLa whole cell lysate: sc-2200.

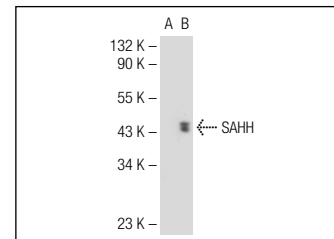
## RECOMMENDED SECONDARY REAGENTS

To ensure optimal results, the following support (secondary) reagents are recommended: 1) Western Blotting: use donkey anti-goat IgG-HRP: sc-2020 (dilution range: 1:2000-1:100,000) or Cruz Marker™ compatible donkey anti-goat IgG-HRP: sc-2033 (dilution range: 1:2000-1:5000), Cruz Marker™ Molecular Weight Standards: sc-2035, TBS Blotto A Blocking Reagent: sc-2333 and Western Blotting Luminol Reagent: sc-2048. 2) Immunoprecipitation: use Protein A/G PLUS-Agarose: sc-2003 (0.5 ml agarose/2.0 ml). 3) Immunofluorescence: use donkey anti-goat IgG-FITC: sc-2024 (dilution range: 1:100-1:400) or donkey anti-goat IgG-TR: sc-2783 (dilution range: 1:100-1:400) with UltraCruz™ Mounting Medium: sc-24941.

## DATA



SAHH (N-20): sc-55758. Western blot analysis of SAHH expression in non-transfected: sc-117752 (A) and mouse SAHH transfected: sc-127504 (B) 293T whole cell lysates.



SAHH (N-20): sc-55758. Western blot analysis of SAHH expression in non-transfected: sc-117752 (A) and mouse SAHH transfected: sc-127505 (B) 293T whole cell lysates.

## RESEARCH USE

For research use only, not for use in diagnostic procedures.

## PROTOCOLS

See our web site at [www.scbt.com](http://www.scbt.com) or our catalog for detailed protocols and support products.



Try **SAHH (A-11): sc-271389** or **SAHH (A-6): sc-393129**, our highly recommended monoclonal alternatives to SAHH (N-20).