

Reelin (H-221): sc-5578

BACKGROUND

Reelin (or ReIn) is a large glycoprotein that is secreted by Cajal-Retzius cells in the forebrain and by granule neurons in the cerebellum. Reelin was shown to be mutated in "reeler" mice, a mutation that is associated with widespread disruption of laminated regions of the brain, leading to impaired motor coordination, tremors and ataxia. Reelin protein expression is complex and changes throughout development. Reelin appears to function upstream of Dab1, in a signaling pathway that controls cell positioning in the developing brain, and is also thought to be a direct effector of the neurotrophin BDNF.

CHROMOSOMAL LOCATION

Genetic locus: RELN (human) mapping to 7q22.1; ReIn (mouse) mapping to 5 A3.

SOURCE

Reelin (H-221) is a rabbit polyclonal antibody raised against amino acids 3239-3460 of Reelin of human origin.

PRODUCT

Each vial contains 200 µg IgG in 1.0 ml of PBS with < 0.1% sodium azide and 0.1% gelatin.

APPLICATIONS

Reelin (H-221) is recommended for detection of Reelin of mouse, rat and human origin by Western Blotting (starting dilution 1:200, dilution range 1:100-1:1000), immunoprecipitation [1-2 µg per 100-500 µg of total protein (1 ml of cell lysate)], immunofluorescence (starting dilution 1:50, dilution range 1:50-1:500) and solid phase ELISA (starting dilution 1:30, dilution range 1:30-1:3000).

Reelin (H-221) is also recommended for detection of Reelin in additional species, including equine, canine, bovine and avian.

Suitable for use as control antibody for Reelin siRNA (h): sc-42208, Reelin siRNA (m): sc-42209, Reelin shRNA Plasmid (h): sc-42208-SH, Reelin shRNA Plasmid (m): sc-42209-SH, Reelin shRNA (h) Lentiviral Particles: sc-42208-V and Reelin shRNA (m) Lentiviral Particles: sc-42209-V.

Molecular Weight of full length Reelin: 420 kDa.

Molecular Weight of Reelin cleavage products: 310/180 kDa.

Positive Controls: HeLa whole cell lysate: sc-2200, mouse brain extract: sc-2253 or rat brain extract: sc-2392.

STORAGE

Store at 4° C, ****DO NOT FREEZE****. Stable for one year from the date of shipment. Non-hazardous. No MSDS required.

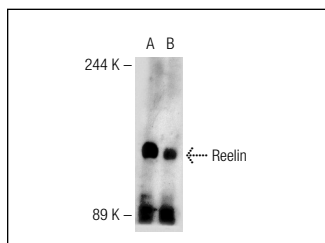
PROTOCOLS

See our web site at www.scbt.com or our catalog for detailed protocols and support products.

RESEARCH USE

For research use only, not for use in diagnostic procedures.

DATA



Reelin (H-221): sc-5578. Western blot analysis of Reelin expression in mouse brain (A) and rat brain (B) tissue extracts.

SELECT PRODUCT CITATIONS

- Lugli, G., et al. 2004. Methodological factors influencing measurement and processing of plasma Reelin in humans. *BMC Biochem.* 4: 9.
- Krathwohl, M.D. and Kaiser, J.L. 2004. Chemokines promote quiescence and survival of human neural progenitor cells. *Stem Cells* 22: 109-118.
- Ess, K.C., et al. 2004. Expression profiling in tuberous sclerosis complex (TSC) knockout mouse astrocytes to characterize human TSC brain pathology. *Glia* 46: 28-40.
- Miyata, H., et al. 2004. Lissencephaly with agenesis of corpus callosum and rudimentary dysplastic cerebellum: a subtype of lissencephaly with cerebellar hypoplasia. *Acta Neuropathol.* 107: 69-81.
- Myers, S.A. and Wang, S.C. 2006. The chicken ovalbumin upstream promoter-transcription factors modulate genes and pathways involved in skeletal muscle cell metabolism. *J. Biol. Chem.* 281: 24149-24160.
- Hirai, S., et al. 2006. The c-Jun N-terminal kinase activator dual leucine zipper kinase regulates axon growth and neuronal migration in the developing cerebral cortex. *J. Neurosci.* 26: 11992-12002.
- Perrone, G., et al. 2007. Reelin expression in human prostate cancer: a marker of tumor aggressiveness based on correlation with grade. *Mod. Pathol.* 20: 344-351.
- García-Miranda, P., et al. 2010. Rat small intestine expresses the reelin-Disabled-1 signalling pathway. *Exp. Physiol.* 95: 498-507.
- Wang, H.Y., et al. 2010. S 24795 limits β -amyloid- α 7 nicotinic receptor interaction and reduces Alzheimer's disease-like pathologies. *Biol. Psychiatry* 67: 522-530.

MONOS
Satisfaction
Guaranteed

Try **Reelin (E-5): sc-25346**, our highly recommended monoclonal alternative to Reelin (H-221). Also, for AC, HRP, FITC, PE, Alexa Fluor® 488 and Alexa Fluor® 647 conjugates, see **Reelin (E-5): sc-25346**.