

TGase4 (T-19): sc-55791

BACKGROUND

Terminally-differentiating mammalian epidermal cells acquire an insoluble, 10 to 20 nm thick protein deposit on the intracellular surface of the plasma membrane known as the cross-linked cell envelope (CE). The CE is a component of the epidermis that is generated through formation of disulfide bonds and γ -glutamyl-lysine isodipeptide bonds, which are formed by the action of transglutaminases (TGases). TGases are intercellularly localizing, Ca^{2+} -dependent enzymes, which catalyze the formation of isopeptide bonds by transferring an amine on to glutamyl residues, thereby cross-linking glutamine residues and lysine residues in substrate proteins. TGases influence numerous biological processes including blood coagulation, epidermal differentiation, seminal fluid coagulation, fertilization, cell differentiation and apoptosis. TGase4, also known as TGM4, TGP or hTGP, is a typical TGase that is specifically expressed in prostate tissue.

REFERENCES

1. Yamanishi, K., et al. 1991. Molecular cloning of human epidermal transglutaminase cDNA from keratinocytes in culture. *Biochem. Biophys. Res. Commun.* 175: 906-913.
2. Gentile, V., et al. 1991. Isolation and characterization of cDNA clones to mouse macrophage and human endothelial cell tissue transglutaminases. *J. Biol. Chem.* 266: 478-483.

CHROMOSOMAL LOCATION

Genetic locus: TGM4 (human) mapping to 3p21.31.

SOURCE

TGase4 (T-19) is an affinity purified goat polyclonal antibody raised against a peptide mapping within an internal region of TGase4 of human origin.

PRODUCT

Each vial contains 200 μg IgG in 1.0 ml of PBS with < 0.1% sodium azide and 0.1% gelatin.

Blocking peptide available for competition studies, sc-55791 P, (100 μg peptide in 0.5 ml PBS containing < 0.1% sodium azide and 0.2% BSA).

APPLICATIONS

TGase4 (T-19) is recommended for detection of TGase4 of human origin by Western Blotting (starting dilution 1:200, dilution range 1:100-1:1000), immunoprecipitation [1-2 μg per 100-500 μg of total protein (1 ml of cell lysate)], immunofluorescence (starting dilution 1:50, dilution range 1:50-1:500), immunohistochemistry (including paraffin-embedded sections) (starting dilution 1:50, dilution range 1:50-1:500) and solid phase ELISA (starting dilution 1:30, dilution range 1:30-1:3000).

Suitable for use as control antibody for TGase4 siRNA (h): sc-63121, TGase4 shRNA Plasmid (h): sc-63121-SH and TGase4 shRNA (h) Lentiviral Particles: sc-63121-V.

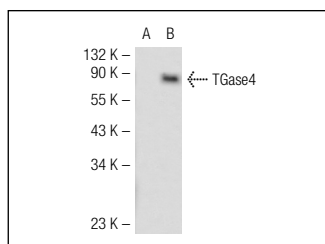
Molecular Weight of TGase4: 77 kDa.

Positive Controls: TGase4 (h2): 293T Lysate: sc-176212.

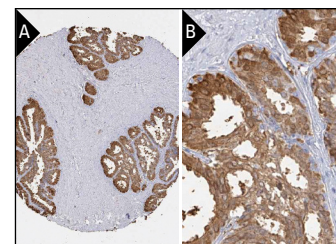
RECOMMENDED SECONDARY REAGENTS

To ensure optimal results, the following support (secondary) reagents are recommended: 1) Western Blotting: use donkey anti-goat IgG-HRP: sc-2020 (dilution range: 1:2000-1:100,000) or Cruz Marker™ compatible donkey anti-goat IgG-HRP: sc-2033 (dilution range: 1:2000-1:5000), Cruz Marker™ Molecular Weight Standards: sc-2035, TBS Blotto A Blocking Reagent: sc-2333 and Western Blotting Luminol Reagent: sc-2048. 2) Immunoprecipitation: use Protein A/G PLUS-Agarose: sc-2003 (0.5 ml agarose/2.0 ml). 3) Immunofluorescence: use donkey anti-goat IgG-FITC: sc-2024 (dilution range: 1:100-1:400) or donkey anti-goat IgG-TR: sc-2783 (dilution range: 1:100-1:400) with UltraCruz™ Mounting Medium: sc-24941. 4) Immunohistochemistry: use ImmunoCruz™: sc-2053 or ABC: sc-2023 goat IgG Staining Systems.

DATA



TGase4 (T-19): sc-55791. Western blot analysis of TGase4 expression in non-transfected: sc-117752 (A) and human TGase4 transfected: sc-176212 (B) 293T whole cell lysates.



TGase4 (T-19): sc-55791. Immunoperoxidase staining of formalin fixed, paraffin-embedded human prostate tissue showing cytoplasmic staining of glandular cells in low (A) and high (B) resolution. Kindly provided by The Swedish Human Protein Atlas (HPA) program.

STORAGE

Store at 4° C, **DO NOT FREEZE**. Stable for one year from the date of shipment. Non-hazardous. No MSDS required.

RESEARCH USE

For research use only, not for use in diagnostic procedures.

PROTOCOLS

See our web site at www.scbt.com or our catalog for detailed protocols and support products.



Try **TGase4 (E-10): sc-271382** or **TGase4 (C-12): sc-398627**, our highly recommended monoclonal alternatives to TGase4 (T-19).