

Limd1 (C-16): sc-55841

BACKGROUND

The Zyxin family of proteins contains five members: Ajuba, Limd1, LPP, TRIP6 and Zyxin. Limd1 (LIM domain-containing protein 1) is an ubiquitously expressed tumor suppressor containing three LIM zinc-binding domains. LIM domains consist of a cysteine-rich consensus sequence containing two distinct zinc-binding subdomains, which mediate protein-protein interactions. Limd1 interacts with the proteins SQSTM1, Rb, p62 and TRAF6. Limd1 was first identified when the deletion of its gene was noted in some cervical cancers. Limd1 blocks *in vitro* and *in vivo* tumor growth and is downregulated in lung cancer. Limd1 may regulate osteoclast development under stressful conditions via its interactions with TRAF6 and p62.

REFERENCES

1. Kiss, H., Kedra, D., Yang, Y., Kost-Alimova, M., Kiss, C., O'Brien, K.P., Fransson, I., Klein, G., Imreh, S. and Dumanski, J.P. 2000. A novel gene containing LIM domains (Limd1) is located within the common eliminated region 1 (C3CER1) in 3p21.3. *Hum. Genet.* 105: 552-559.
2. Kholodnyuk, I.D., Szeles, A., Yang, Y., Klein, G. and Imreh, S. 2001. Inactivation of the human fragile histidine triad gene at 3p14.2 in monochromosomal human/mouse microcell hybrid-derived severe combined immuno-deficient mouse tumors. *Cancer Res.* 60: 7119-7125.
3. Kiss, H., Kedra, D., Kiss, C., Kost-Alimova, M., Yang, Y., Klein, G., Imreh, S. and Dumanski, J.P. 2001. The LZTFL1 gene is a part of a transcriptional map covering 250 kb within the common eliminated region 1 (C3CER1) in 3p21.3. *Genomics* 73: 10-19.
4. Sharp, T.V., Munoz, F., Bourboulia, D., Presneau, N., Darai, E., Wang, H.W., Cannon, M., Butcher, D.N., Nicholson, A.G., Klein, G., Imreh, S. and Boshoff, C. 2004. LIM domains-containing protein 1 (Limd1), a tumor suppressor encoded at chromosome 3p21.3, binds Rb and represses E2F-driven transcription. *Proc. Natl. Acad. Sci. USA* 101: 16531-16536.
5. Petit, M.M., Crombez, K.R., Vervenne, H.B., Weyns, N. and Van de Ven, W.J. 2005. The tumor suppressor scrib selectively interacts with specific members of the Zyxin family of proteins. *FEBS Lett.* 579: 5061-5068.

CHROMOSOMAL LOCATION

Genetic locus: LIMD1 (human) mapping to 3p21.31.

SOURCE

Limd1 (C-16) is an affinity purified goat polyclonal antibody raised against a peptide mapping at the C-terminus of Limd1 of human origin.

PRODUCT

Each vial contains 200 µg IgG in 1.0 ml of PBS with < 0.1% sodium azide and 0.1% gelatin.

Blocking peptide available for competition studies, sc-55841 P, (100 µg peptide in 0.5 ml PBS containing < 0.1% sodium azide and 0.2% BSA).

RESEARCH USE

For research use only, not for use in diagnostic procedures.

APPLICATIONS

Limd1 (C-16) is recommended for detection of Limd1 of human origin by Western Blotting (starting dilution 1:200, dilution range 1:100-1:1000), immunoprecipitation [1-2 µg per 100-500 µg of total protein (1 ml of cell lysate)], immunofluorescence (starting dilution 1:50, dilution range 1:50-1:500) and solid phase ELISA (starting dilution 1:30, dilution range 1:30-1:3000).

Limd1 (C-16) is also recommended for detection of Limd1 in additional species, including porcine.

Suitable for use as control antibody for Limd1 siRNA (h): sc-62561, Limd1 shRNA Plasmid (h): sc-62561-SH and Limd1 shRNA (h) Lentiviral Particles: sc-62561-V.

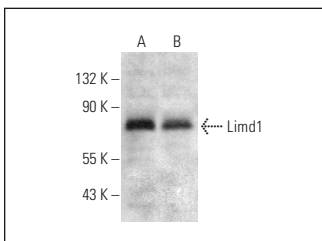
Molecular Weight of Limd1: 73 kDa.

Positive Controls: HEK293 whole cell lysate: sc-45136, HeLa whole cell lysate: sc-2200 or IMR-32 cell lysate: sc-2409.

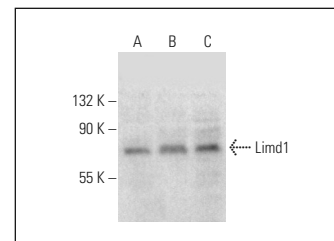
RECOMMENDED SECONDARY REAGENTS

To ensure optimal results, the following support (secondary) reagents are recommended: 1) Western Blotting: use donkey anti-goat IgG-HRP: sc-2020 (dilution range: 1:2000-1:100,000) or Cruz Marker™ compatible donkey anti-goat IgG-HRP: sc-2033 (dilution range: 1:2000-1:5000), Cruz Marker™ Molecular Weight Standards: sc-2035, TBS Blotto A Blocking Reagent: sc-2333 and Western Blotting Luminol Reagent: sc-2048. 2) Immunoprecipitation: use Protein A/G PLUS-Agarose: sc-2003 (0.5 ml agarose/2.0 ml). 3) Immunofluorescence: use donkey anti-goat IgG-FITC: sc-2024 (dilution range: 1:100-1:400) or donkey anti-goat IgG-TR: sc-2783 (dilution range: 1:100-1:400) with UltraCruz™ Mounting Medium: sc-24941.

DATA



Limd1 (C-16): sc-55841. Western blot analysis of Limd1 expression in HEK293 (A) and HeLa (B) whole cell lysates.



Limd1 (C-16): sc-55841. Western blot analysis of Limd1 expression in IMR-32 (A) and MCF7 (B) whole cell lysates and Jurkat nuclear extract (C).

STORAGE

Store at 4° C, **DO NOT FREEZE**. Stable for one year from the date of shipment. Non-hazardous. No MSDS required.

MONOS
Satisfaction
Guaranteed

Try **Limd1 (H-4): sc-271448** or **Limd1 (E-10): sc-365050**, our highly recommended monoclonal alternatives to Limd1 (C-16).