

MTGR1 (L-18): sc-55966

BACKGROUND

MTGR1 (CBFA2T2, ETO homologous on chromosome 20) is a 604 amino acid protein encoded by the human CBFA2T2 gene. MTGR1 belongs to the CBFA2T family and contains one MYND-type (myeloid translocation protein 8, Nervy and DEAF-1) zinc finger and one TAFH (TBP-associated factor) domain. MTGR1 may function as a complex with the chimeric protein RUNX1/AML1-CBFA2T1/MTG8 which is produced in acute myeloid leukemia with the chromosomal translocation t(8;21). Through this complex MTGR1 may cause the repression of AML1-dependent transcription and the induction of G-CSF/CSF3-dependent cell growth. It is also believed to be a tumor suppressor gene candidate for myeloid tumors with the deletion of the 20q11 region. MTGR1 forms both a homo-oligomer and hetero-oligomer with MTG8 and is ubiquitously expressed in fetal and adult tissues. It is highly expressed in adult brain, heart, lung, kidney, lymph node, appendix, thymus, testis, uterus, small intestine, prostate and thymus. Deletion of the CBFA2T2 gene has been described in 10%, 5% and 3% of cases in polycythemia vera (PV), myelodysplastic syndromes (MDS) and acute myeloid leukemia (AML), respectively.

REFERENCES

1. Fracchiolla, N.S., Colombo, G., Finelli, P., Maiolo, A.T. and Neri, A. 1998. EHT, a new member of the MTG8/ETO gene family, maps on 20q11 region and is deleted in acute myeloid leukemias. *Blood* 92: 3481-3484.
2. Kitabayashi, I., Ida, K., Morohoshi, F., Yokoyama, A., Mitsuhashi, N., Shimizu, K., Nomura, N., Hayashi, Y. and Ohki, M. 1998. The AML1-MTG8 leukemic fusion protein forms a complex with a novel member of the MTG8(ETO/CDR) family, MTGR1. *Mol. Cell. Biol.* 18: 846-858.
3. Calabi, F. and Cilli, V. 1998. CBFA2T1, a gene rearranged in human leukemia, is a member of a multigene family. *Genomics* 52: 332-341.
4. Morohoshi, F., Mitani, S., Mitsuhashi, N., Kitabayashi, I., Takahashi, E., Suzuki, M., Munakata, N. and Ohki, M. 2000. Structure and expression pattern of a human MTG8/ETO family gene, MTGR1. *Gene* 241: 287-295.
5. Hoogeveen, A.T., Rossetti, S., Stoyanova, V., Schonkeren, J., Fenaroli, A., Schiaffonati, L., van Unen, L. and Sacchi, N. 2002. The transcriptional co-repressor MTG16a contains a novel nucleolar targeting sequence deranged in t(16;21)-positive myeloid malignancies. *Oncogene* 21: 6703-6712.

CHROMOSOMAL LOCATION

Genetic locus: CBFA2T2 (human) mapping to 20q11; Cbfa2t2 (mouse) mapping to 2 C3.2.

SOURCE

MTGR1 (L-18) is an affinity purified goat polyclonal antibody raised against a peptide mapping within an internal region of MTGR1 of human origin.

PRODUCT

Each vial contains 200 µg IgG in 1.0 ml of PBS with < 0.1% sodium azide and 0.1% gelatin.

Blocking peptide available for competition studies, sc-55966 P, (100 µg peptide in 0.5 ml PBS containing < 0.1% sodium azide and 0.2% BSA).

APPLICATIONS

MTGR1 (L-18) is recommended for detection of MTGR1 of mouse, rat and human origin by Western Blotting (starting dilution 1:200, dilution range 1:100-1:1000), immunoprecipitation [1-2 µg per 100-500 µg of total protein (1 ml of cell lysate)], immunofluorescence (starting dilution 1:50, dilution range 1:50-1:500) and solid phase ELISA (starting dilution 1:30, dilution range 1:30-1:3000).

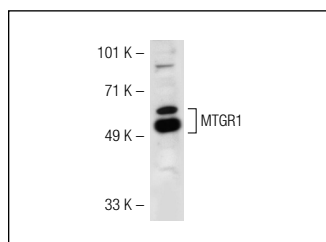
Suitable for use as control antibody for MTGR1 siRNA (h): sc-62645 and MTGR1 siRNA (m): sc-62646.

Molecular Weight of MTGR1: 85 kDa.

RECOMMENDED SECONDARY REAGENTS

To ensure optimal results, the following support (secondary) reagents are recommended: 1) Western Blotting: use donkey anti-goat IgG-HRP: sc-2020 (dilution range: 1:2000-1:100,000) or Cruz Marker™ compatible donkey anti-goat IgG-HRP: sc-2033 (dilution range: 1:2000-1:5000), Cruz Marker™ Molecular Weight Standards: sc-2035, TBS Blotto A Blocking Reagent: sc-2333 and Western Blotting Luminol Reagent: sc-2048. 2) Immunoprecipitation: use Protein A/G PLUS-Agarose: sc-2003 (0.5 ml agarose/2.0 ml). 3) Immunofluorescence: use donkey anti-goat IgG-FITC: sc-2024 (dilution range: 1:100-1:400) or donkey anti-goat IgG-TR: sc-2783 (dilution range: 1:100-1:400) with UltraCruz™ Mounting Medium: sc-24941.

DATA



MTGR1 (L-18): sc-55966. Western blot analysis of MTGR1 expression in Jurkat nuclear extract.

STORAGE

Store at 4° C, ****DO NOT FREEZE****. Stable for one year from the date of shipment. Non-hazardous. No MSDS required.

RESEARCH USE

For research use only, not for use in diagnostic procedures.

PROTOCOLS

See our web site at www.scbt.com or our catalog for detailed protocols and support products.