

MTGR1 (P-17): sc-55967

BACKGROUND

MTGR1 (CBFA2T2, ETO homologous on chromosome 20) is a nuclear protein encoded by the human CBFA2T2 gene. MTGR1 belongs to the CBFA2T family and contains one MYND-type (myeloid translocation protein 8, Nery and DEAF-1) zinc finger and one TAFH (TBP-associated factor) domain. MTGR1 may function within the RUNX1/AML1-ETO/MTG8 chimeric protein complex which is produced from the chromosomal translocation t(8;21), which is also implicated with an acute myeloid leukemia. Within the RUNX complex, MTGR1 causes repression of RUNX1-dependent transcription and induces G-CSF/CSF3-dependent growth. Therefore, MTGR1 is a tumor suppressor candidate for myeloid tumors containing a deletion within the 20q10-13 region. MTGR1 forms both a homo-oligomer and a hetero-oligomer with ETO and is ubiquitously expressed in fetal and adult tissues. CBFA2T2 deletion has been found in 10% of polycythemia vera (PV) cases.

CHROMOSOMAL LOCATION

Genetic locus: CBFA2T2 (human) mapping to 20q11.21; Cbfa2t2 (mouse) mapping to 2 H1.

SOURCE

MTGR1 (P-17) is an affinity purified goat polyclonal antibody raised against a peptide mapping within an internal region of MTGR1 of human origin.

PRODUCT

Each vial contains 200 µg IgG in 1.0 ml of PBS with < 0.1% sodium azide and 0.1% gelatin.

Blocking peptide available for competition studies, sc-55967 P, (100 µg peptide in 0.5 ml PBS containing < 0.1% sodium azide and 0.2% BSA).

STORAGE

Store at 4° C, ****DO NOT FREEZE****. Stable for one year from the date of shipment. Non-hazardous. No MSDS required.

APPLICATIONS

MTGR1 (P-17) is recommended for detection of MTGR1 of mouse, rat and human origin by Western Blotting (starting dilution 1:200, dilution range 1:100-1:1000), immunoprecipitation [1-2 µg per 100-500 µg of total protein (1 ml of cell lysate)], immunofluorescence (starting dilution 1:50, dilution range 1:50-1:500) and solid phase ELISA (starting dilution 1:30, dilution range 1:30-1:3000).

MTGR1 (P-17) is also recommended for detection of MTGR1 in additional species, including canine, porcine and avian.

Suitable for use as control antibody for MTGR1 siRNA (h): sc-62645, MTGR1 siRNA (m): sc-62646, MTGR1 shRNA Plasmid (h): sc-62645-SH, MTGR1 shRNA Plasmid (m): sc-62646-SH, MTGR1 shRNA (h) Lentiviral Particles: sc-62645-V and MTGR1 shRNA (m) Lentiviral Particles: sc-62646-V.

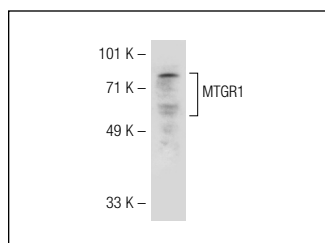
Molecular Weight of MTGR1: 67 kDa.

Positive Controls: Jurkat nuclear extract: sc-2132 or HeLa whole cell lysate: sc-2200.

RECOMMENDED SECONDARY REAGENTS

To ensure optimal results, the following support (secondary) reagents are recommended: 1) Western Blotting: use donkey anti-goat IgG-HRP: sc-2020 (dilution range: 1:2000-1:100,000) or Cruz Marker™ compatible donkey anti-goat IgG-HRP: sc-2033 (dilution range: 1:2000-1:5000), Cruz Marker™ Molecular Weight Standards: sc-2035, TBS Blotto A Blocking Reagent: sc-2333 and Western Blotting Luminol Reagent: sc-2048. 2) Immunoprecipitation: use Protein A/G PLUS-Agarose: sc-2003 (0.5 ml agarose/2.0 ml). 3) Immunofluorescence: use donkey anti-goat IgG-FITC: sc-2024 (dilution range: 1:100-1:400) or donkey anti-goat IgG-TR: sc-2783 (dilution range: 1:100-1:400) with UltraCruz™ Mounting Medium: sc-24941.

DATA



MTGR1 (P-17): sc-55967. Western blot analysis of MTGR1 expression in Jurkat nuclear extract.

RESEARCH USE

For research use only, not for use in diagnostic procedures.

PROTOCOLS

See our web site at www.scbt.com or our catalog for detailed protocols and support products.

MONOS
Satisfaction
Guaranteed

Try **MTGR1 (B-7): sc-390114** or **MTGR1 (CBF5I134): sc-81326**, our highly recommended monoclonal alternatives to MTGR1 (P-17).