

Bcl-rambo (Rocky-2): sc-56020

BACKGROUND

Apoptosis is defined as a set of cascades which, when initiated, program the cell to undergo lethal changes such as membrane blebbing, mitochondrial breakdown and DNA fragmentation. The Bcl-2 family of proteins plays a central regulatory role in apoptosis. Bcl-rambo, a member of the Bcl-2 family, localizes to the mitochondria and, like other Bcl-2 family members, contains all four BH domains. Although Bcl-rambo shares structural similarity to other Bcl-2 members, it differs from them in its unique C-terminal region. Bcl-rambo has a 250 amino acid sequence containing two tandem repeats that precedes the membrane anchor region at its C-terminus. Additionally, it is the membrane anchor C-terminal region of Bcl-rambo, not its Bcl-2 homology motifs, that is responsible for its pro-apoptotic activity. Bcl-rambo induces apoptosis when overexpressed and appears to do so by promoting mitochondrial cytochrome c release. It may also facilitate the activation of caspase-3.

REFERENCES

1. Kerr, J.F., Wyllie, A.H. and Currie, A.R. 1972. Apoptosis: a basic biological phenomenon with wide-ranging implications in tissue kinetics. *Br. J. Cancer* 26: 239-257.
2. Hockenbery, D., Nunez, G., Millman, C., Schreiber, R.D. and Korsmeyer, S.J. 1990. Bcl-2 is an inner mitochondrial membrane protein that blocks programmed cell death. *Nature* 348: 334-336.
3. Alnemri, E.S., Robertson, N.M., Fernandes, T.F., Croce, C.M. and Litwack, G. 1992. Overexpressed full-length human Bcl-2 extends the survival of baculovirus-infected Sf9 insect cells. *Proc. Natl. Acad. Sci. USA* 89: 7295-7299.
4. Reed, J.C. 1994. Bcl-2 and the regulation of programmed cell death. *J. Cell Biol.* 124: 1-6.
5. Yang, J., Liu, X., Bhalla, K., Kim, C.N., Ibrado, A.M., Cai, J., Peng, T.I., Jones, D.P. and Wang, X. 1997. Prevention of apoptosis by Bcl-2: release of cytochrome c from mitochondria blocked. *Science* 275: 1129-1132.
6. Adams, J.M. and Cory, S. 1998. The Bcl-2 protein family: arbiters of cell survival. *Science* 281: 1322-1326.
7. Kataoka, T., Holler, N., Micheau, O., Martinon, F., Tinel, A., Hofmann, K. and Tschoop, J. 2001. Bcl-rambo, a novel Bcl-2 homologue that induces apoptosis via its unique C-terminal extension. *J. Biol. Chem.* 276: 19548-19554.
8. Kaufmann, S.H. and Hengartner, M.O. 2001. Programmed cell death: alive and well in the new millennium. *Trends Cell Biol.* 11: 526-534.

CHROMOSOMAL LOCATION

Genetic locus: BCL2L13 (human) mapping to 22q11.

SOURCE

Bcl-rambo (Rocky-2) is a mouse monoclonal antibody raised against amino acids 224-459 of Bcl-rambo of human origin.

STORAGE

Store at 4° C, **DO NOT FREEZE**. Stable for one year from the date of shipment. Non-hazardous. No MSDS required.

PRODUCT

Each vial contains 50 µg IgG₁ in 500 µl of PBS with < 0.1% sodium azide and 0.1% gelatin.

APPLICATIONS

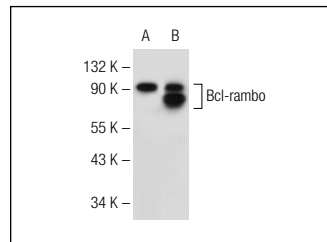
Bcl-rambo (Rocky-2) is recommended for detection of Bcl-rambo of human origin by Western Blotting (starting dilution 1:200, dilution range 1:100-1:1000), immunoprecipitation [1-2 µg per 100-500 µg of total protein (1 ml of cell lysate)] and immunofluorescence (starting dilution 1:50, dilution range 1:50-1:500).

Suitable for use as control antibody for Bcl-rambo siRNA (h): sc-62015, Bcl-rambo shRNA Plasmid (h): sc-62015-SH and Bcl-rambo shRNA (h) Lentiviral Particles: sc-62015-V.

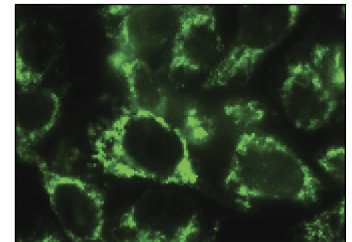
Molecular Weight of Bcl-rambo: 53 kDa.

Positive Controls: Bcl-rambo (h2): 293T Lysate: sc-128091 or HeLa whole cell lysate: sc-2200.

DATA



Bcl-rambo (Rocky-2): sc-56020. Western blot analysis of Bcl-rambo expression in non-transfected: sc-117752 (A) and human Bcl-rambo transfected: sc-128091 (B) 293T whole cell lysates.



Bcl-rambo (Rocky-2): sc-56020. Immunofluorescence staining of methanol-fixed HeLa cells showing cytoplasmic and membrane localization.

RESEARCH USE

For research use only, not for use in diagnostic procedures.

PROTOCOLS

See our web site at www.scbt.com for detailed protocols and support products.