

caspase-6 (6CSP01): sc-56061

BACKGROUND

A unique family of cysteine proteases has been described that differs in sequence, structure and substrate specificity from any previously described protease family. This family, termed Ced-3/caspase-1, is comprised of caspase-1, caspase-2, caspase-3, caspase-4, caspase-6 and caspase-7 (also designated Mch3, ICE-LAP3 or CMH-1), caspase-9 and caspase-10. Ced-3/caspase-1 family members function as key components of the apoptotic machinery and act to destroy specific target proteins which are critical to cellular longevity. Poly (ADP-ribose) polymerase plays an integral role in surveying for DNA mutations and double strand breaks. Caspase-3, caspase-7 and caspase-9, but not caspase-1, have been shown to cleave the nuclear protein PARP into an apoptotic fragment. Caspase-6, but not caspase-3, has been shown to cleave the nuclear lamins which are critical to maintaining the integrity of the nuclear envelope and cellular morphology. Caspase-10 has been shown to activate caspase-3 and caspase-7 in response to apoptotic stimuli.

REFERENCES

- Lindahl, T., et al. 1995. Post-translational modification of poly (ADP-ribose) polymerase induced by DNA strand breaks. *Trends Biochem. Sci.* 20: 405-411.
- Duan, H., et al. 1996. ICE-LAP3, a novel mammalian homologue of the *Caenorhabditis elegans* cell death protein Ced-3 is activated during FAS- and tumor necrosis factor-induced apoptosis. *J. Biol. Chem.* 271: 1621-1625.
- Fernandes-Alnemri, T.F., et al. 1996. *In vitro* activation of CPP32 and Mch3 by Mch4, a novel human apoptotic cysteine protease containing two FADD-like domains. *Proc. Natl. Acad. Sci. USA* 93: 7464-7469.
- Takahashi, A., et al. 1996. Cleavage of Lamin A by Mch2A but not CPP32: multiple interleukin-1 β -converting enzyme-related proteases with distinct substrate recognition properties are active in apoptosis. *Proc. Natl. Acad. Sci. USA* 93: 8395-8400.
- Duan, H., et al. 1996. ICE-LAP6, a novel member of the ICE/Ced-3 gene family, is activated by the cytotoxic T cell protease granzyme B. *J. Biol. Chem.* 271: 16720-16724.

CHROMOSOMAL LOCATION

Genetic locus: CASP6 (human) mapping to 4q25.

SOURCE

caspase-6 (6CSP01) is a mouse monoclonal antibody raised against the prodomain of caspase-6 of human origin.

PRODUCT

Each vial contains 200 μ g IgG $_1$ kappa light chain in 1.0 ml of PBS with < 0.1% sodium azide, 0.1% gelatin and 0.1% stabilizer protein.

STORAGE

Store at 4° C, ****DO NOT FREEZE****. Stable for one year from the date of shipment. Non-hazardous. No MSDS required.

APPLICATIONS

caspase-6 (6CSP01) is recommended for detection of caspase-6 of human origin by Western Blotting (starting dilution 1:200, dilution range 1:100-1:1000) and immunoprecipitation [1-2 μ g per 100-500 μ g of total protein (1 ml of cell lysate)].

Suitable for use as control antibody for caspase-6 siRNA (h): sc-72802, caspase-6 shRNA Plasmid (h): sc-72802-SH and caspase-6 shRNA (h) Lentiviral Particles: sc-72802-V.

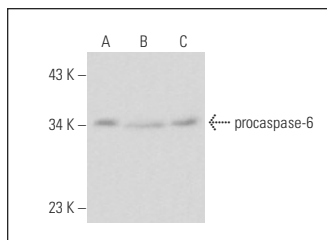
Molecular Weight of caspase-6: 34 kDa.

Positive Controls: Jurkat + PMA cell lysate: sc-24718, Jurkat + staurosporine cell lysate: sc-24719 or MCF7 whole cell lysate: sc-2206.

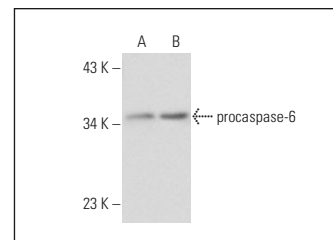
RECOMMENDED SUPPORT REAGENTS

To ensure optimal results, the following support reagents are recommended: 1) Western Blotting: use m-IgG κ BP-HRP: sc-516102 or m-IgG κ BP-HRP (Cruz Marker): sc-516102-CM (dilution range: 1:1000-1:10000), Cruz Marker™ Molecular Weight Standards: sc-2035, TBS Blotto A Blocking Reagent: sc-2333 and Western Blotting Luminol Reagent: sc-2048. 2) Immunoprecipitation: use Protein A/G PLUS-Agarose: sc-2003 (0.5 ml agarose/2.0 ml).

DATA



caspase-6 (6CSP01): sc-56061. Western blot analysis of procaspase-6 expression in PMA-treated Jurkat (A), staurosporine-treated Jurkat (B) and FAS-treated Jurkat (C) whole cell lysates.



caspase-6 (6CSP01): sc-56061. Western blot analysis of procaspase-6 expression in MCF7 (A) and etoposide-treated MCF7 (B) whole cell lysates.

RESEARCH USE

For research use only, not for use in diagnostic procedures.

PROTOCOLS

See our web site at www.scbt.com for detailed protocols and support products.