

Pdcd-7 (46C713): sc-56201

BACKGROUND

PD-1 (programmed cell death-1 protein) is a type I transmembrane receptor and a member of the immunoglobulin gene superfamily. Expression of PD-1 is detected in mouse thymus, and it is induced in stimulated B and T cell lines, where it may play a role in the negative regulation of various immune responses. PD-2 (also known as PDCD2, PDL2 or B7DC) is highly expressed in placenta, heart, pancreas, lung and liver. PD-2 is also expressed in spleen, lymph nodes and thymus. Pdcd-4 is a nuclear protein localized to the nucleus of proliferating cells. ALG-2 (apoptosis-linked gene 2), also designated programmed cell death protein 6, is a Ca²⁺-binding protein that participates in regulatory events occurring late in the apoptotic program and where several death signals converge. Pdcd-7, also designated programmed cell death protein 7, is a 485 amino acid protein that promotes apoptosis when over-expressed. Human Pdcd-7 and the mouse Pdcd-7 protein, designated as Es18, share 95% homology in the overlapping region.

REFERENCES

1. Ishida, Y., Agata, Y., Shibahara, K. and Honjo, T. 1992. Induced expression of PD-1, a novel member of the immunoglobulin gene superfamily, upon programmed cell death. *EMBO J.* 11: 3887-3895.
2. Park, E.J., Kim, J.H., Seong, R.H., Kim, C.G., Park, S.D. and Hong, S.H. 1999. Characterization of a novel mouse cDNA, ES18, involved in apoptotic cell death of T cells. *Nucleic Acids Res.* 27: 1524-1530.
3. Agata, Y., Kawasaki, A., Nishimura, H., Ishida, Y., Tsubata, T., Yagita, H. and Honjo, T. 1996. Expression of the PD-1 antigen on the surface of stimulated mouse T and B lymphocytes. *Int. Immunol.* 8: 765-772.
4. Li, W., Jin, K., Nagayama, T., He, X., Chang, J., Minami, M., Graham, S.H. and Simon, R.P. and Greenberg, D.A. 2000. Increased expression of apoptosis-linked gene 2 (ALG2) in the rat brain after temporary focal cerebral ischemia. *Neuroscience* 96: 161-168.
5. Liu, Z. and Aune, T.M. 2006. Deregulated stress system in non-obese diabetic lymphocyte. *Genes Immun.* 7: 352-358.
6. Latchman, Y., Wood, C.R., Chernova, T., Chaudhary, D., Borde, M., Chernova, I., Iwai, Y., Long, A.J., Brown, J.A., Nunes, R., Greenfield, E.A., Bourque, K., Boussiotis, V.A., Carter, L.L., Carreno, B.M., Malenkovich, N., Nishimura, H., Okazaki, T., Honjo, T., Sharpe, A.H. and Freeman, G.J. 2001. PD-L2 is a second ligand for PD-1 and inhibits T cell activation. *Nat. Immunol.* 2: 261-268.

CHROMOSOMAL LOCATION

Genetic locus: Pdcd7 (mouse) mapping to 9 C.

SOURCE

Pdcd-7 (46C713) is a mouse monoclonal antibody raised against Pdcd-7 of mouse origin.

PRODUCT

Each vial contains 100 µg IgG₁ kappa light chain in 1.0 ml of PBS with < 0.1% sodium azide and 0.1% gelatin.

APPLICATIONS

Pdcd-7 (46C713) is recommended for detection of Pdcd-7 of mouse origin by Western Blotting (starting dilution 1:200, dilution range 1:100-1:1000) and immunoprecipitation [1-2 µg per 100-500 µg of total protein (1 ml of cell lysate)].

Suitable for use as control antibody for Pdcd-7 siRNA (m): sc-72132, Pdcd-7 shRNA Plasmid (m): sc-72132-SH and Pdcd-7 shRNA (m) Lentiviral Particles: sc-72132-V.

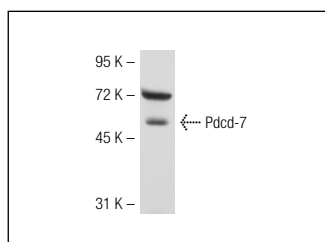
Molecular Weight of Pdcd-7: 55 kDa.

Positive Controls: mouse testis extract: sc-2405.

RECOMMENDED SUPPORT REAGENTS

To ensure optimal results, the following support reagents are recommended: 1) Western Blotting: use m-IgGκ BP-HRP: sc-516102 or m-IgGκ BP-HRP (Cruz Marker): sc-516102-CM (dilution range: 1:1000-1:10000), Cruz Marker™ Molecular Weight Standards: sc-2035, TBS Blotto A Blocking Reagent: sc-2333 and Western Blotting Luminol Reagent: sc-2048. 2) Immunoprecipitation: use Protein A/G PLUS-Agarose: sc-2003 (0.5 ml agarose/2.0 ml).

DATA



Pdcd-7 (46C713): sc-56201. Western blot analysis of Pdcd-7 expression in mouse testis tissue extract.

STORAGE

Store at 4° C, ****DO NOT FREEZE****. Stable for one year from the date of shipment. Non-hazardous. No MSDS required.

RESEARCH USE

For research use only, not for use in diagnostic procedures.

PROTOCOLS

See our web site at www.scbt.com for detailed protocols and support products.