

# LKB1 (D-17): sc-5637

## BACKGROUND

Peutz-Jeghers Syndrome (PJS) is a rare hereditary disease characterized by melanocytic macules lips, gastrointestinal hamartomatous polyps and an increased risk for many classes of cancer. LKB1 (also designated STK11 and PJS) has been identified as the gene mutated in PJS. LKB1 is a 433 amino acid serine/threonine kinase with strong homology to the *Xenopus* cytoplasmic protein kinase XEEK1 and weaker similarity to many other protein kinases. LKB1 is ubiquitously expressed and many frameshift, deletion and splicing mutations have been identified in PJS patients. Despite the increased risk of cancer for PJS patients, LKB1 does not appear to play a major role in colorectal, testicular or breast cancers.

## REFERENCES

1. Jenne, D.E., et al. 1998. Peutz-Jeghers syndrome is caused by mutations in a novel serine threonine kinase. *Nat. Genet.* 18: 38-43.
2. Hemminki, A., et al. 1998. A serine/threonine kinase gene defective in Peutz-Jeghers syndrome. *Nature* 391: 184-187.
3. Mehenni, H., et al. 1998. Loss of LKB1 Kinase activity in Peutz-Jeghers syndrome, and evidence for allelic and locus heterogeneity. *Am. J. Hum. Genet.* 63: 1641-1650.
4. Bignell, G.R., et al. 1998. Low frequency of somatic mutations in the LKB1/Peutz-Jeghers syndrome gene in sporadic breast cancer. *Cancer Res.* 58: 1384-1386.
5. Avizienyte, E., et al. 1998. Somatic mutations in LKB1 are rare in sporadic colorectal and testicular tumors. *Cancer Res.* 58: 2087-2090.
6. Resta, N., et al. 1998. STK11 mutations in Peutz-Jeghers syndrome and sporadic colon cancer. *Cancer Res.* 58: 4799-4800.

## CHROMOSOMAL LOCATION

Genetic locus: Stk11 (mouse) mapping to 10 C1.

## SOURCE

LKB1 (D-17) is an affinity purified goat polyclonal antibody raised against a peptide mapping at the N-terminus of LKB1 of mouse origin.

## PRODUCT

Each vial contains 200 µg IgG in 1.0 ml of PBS with < 0.1% sodium azide and 0.1% gelatin.

Blocking peptide available for competition studies, sc-5637 P, (100 µg peptide in 0.5 ml PBS containing < 0.1% sodium azide and 0.2% BSA).

## STORAGE

Store at 4° C, **\*\*DO NOT FREEZE\*\***. Stable for one year from the date of shipment. Non-hazardous. No MSDS required.

## PROTOCOLS

See our web site at [www.scbt.com](http://www.scbt.com) or our catalog for detailed protocols and support products.

## APPLICATIONS

LKB1 (D-17) is recommended for detection of LKB1 of mouse and rat origin by Western Blotting (starting dilution 1:200, dilution range 1:100-1:1000), immunofluorescence (starting dilution 1:50, dilution range 1:50-1:500), immunohistochemistry (including paraffin-embedded sections) (starting dilution 1:50, dilution range 1:50-1:500) and solid phase ELISA (starting dilution 1:30, dilution range 1:30-1:3000).

Suitable for use as control antibody for LKB1 siRNA (m): sc-35817, LKB1 siRNA (r): sc-270074, LKB1 shRNA Plasmid (m): sc-35817-SH, LKB1 shRNA Plasmid (r): sc-270074-SH, LKB1 shRNA (m) Lentiviral Particles: sc-35817-V and LKB1 shRNA (r) Lentiviral Particles: sc-270074-V.

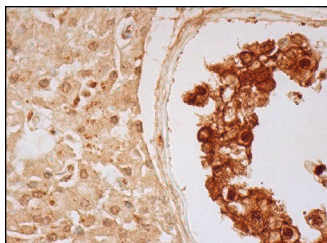
Molecular Weight of LKB1: 52 kDa.

Positive Controls: mouse kidney extract: sc-2255.

## RECOMMENDED SECONDARY REAGENTS

To ensure optimal results, the following support (secondary) reagents are recommended: 1) Western Blotting: use donkey anti-goat IgG-HRP: sc-2020 (dilution range: 1:2000-1:100,000) or Cruz Marker™ compatible donkey anti-goat IgG-HRP: sc-2033 (dilution range: 1:2000-1:5000), Cruz Marker™ Molecular Weight Standards: sc-2035, TBS Blotto A Blocking Reagent: sc-2333 and Western Blotting Luminol Reagent: sc-2048. 2) Immunofluorescence: use donkey anti-goat IgG-FITC: sc-2024 (dilution range: 1:100-1:400) or donkey anti-goat IgG-TR: sc-2783 (dilution range: 1:100-1:400) with UltraCruz™ Mounting Medium: sc-24941. 3) Immunohistochemistry: use ImmunoCruz™: sc-2053 or ABC: sc-2023 goat IgG Staining Systems.

## DATA



LKB1 (D-17): sc-5637. Immunoperoxidase staining of formalin fixed, paraffin-embedded human testis tissue showing cytoplasmic, membrane and nuclear staining of cells in seminiferous ducts and cytoplasmic and nuclear staining of Leydig cells.

## RESEARCH USE

For research use only, not for use in diagnostic procedures.



Try **LKB1 (Ley 37D/G6): sc-32245**, our highly recommended monoclonal alternative to LKB1 (D-17). Also, for AC, HRP, FITC, PE, Alexa Fluor® 488 and Alexa Fluor® 647 conjugates, see **LKB1 (Ley 37D/G6): sc-32245**.