

MAP-2 (SPM284): sc-56561

BACKGROUND

Microtubules, the primary component of the cytoskeletal network, interact with proteins called microtubule-associated proteins (MAPs). The microtubule-associated proteins can be divided into two groups, structural and dynamic. The structural microtubule-associated proteins, MAP-1A, MAP-1B, MAP-2A, MAP-2B and MAP-2C, stimulate Tubulin assembly, enhance microtubule stability and influence the spatial distribution of microtubules within cells. Both MAP-1 and, to a greater extent, MAP-2 have been implicated as agents of microtubule depolymerization by suppressing the dynamic instability of the microtubules. The suppression of microtubule dynamic instability by the MAP proteins is thought to be associated with phosphorylation of the MAPs.

REFERENCES

1. Sloboda, R.D., et al. 1976. Microtubule-associated proteins and the stimulation of Tubulin assembly *in vitro*. *Biochemistry* 15: 4497-4505.
2. Murphy, D.B., et al. 1977. Role of Tubulin-associated proteins in microtubule nucleation and elongation. *J. Mol. Biol.* 117: 33-52.

CHROMOSOMAL LOCATION

Genetic locus: MAP2 (human) mapping to 2q34; Mtap2 (mouse) mapping to 1 C3.

SOURCE

MAP-2 (SPM284) is a mouse monoclonal antibody raised against MAP-2 of bovine origin, with epitope mapping between amino acids 997-1332.

PRODUCT

Each vial contains 200 µg IgG₁ kappa light chain in 1.0 ml of PBS with < 0.1% sodium azide and 0.1% gelatin.

APPLICATIONS

MAP-2 (SPM284) is recommended for detection of MAP-2A and MAP-2B of mouse, rat, human and *Xenopus laevis* origin by Western Blotting (starting dilution 1:200, dilution range 1:100-1:1000), immunoprecipitation [1-2 µg per 100-500 µg of total protein (1 ml of cell lysate)], immunofluorescence (starting dilution 1:50, dilution range 1:50-1:500) and immunohistochemistry (including paraffin-embedded sections) (starting dilution 1:50, dilution range 1:50-1:500); non cross-reactive with MAP-2C, MAP-1, MAP-5, Tubulin or Tau.

MAP-2 (SPM284) is also recommended for detection of MAP-2A and MAP-2B in additional species, including bovine.

Suitable for use as control antibody for MAP-2 siRNA (h): sc-35853, MAP-2 siRNA (m): sc-35854, MAP-2 shRNA Plasmid (h): sc-35853-SH, MAP-2 shRNA Plasmid (m): sc-35854-SH, MAP-2 shRNA (h) Lentiviral Particles: sc-35853-V and MAP-2 shRNA (m) Lentiviral Particles: sc-35854-V.

Molecular Weight of MAP-2: 280 kDa.

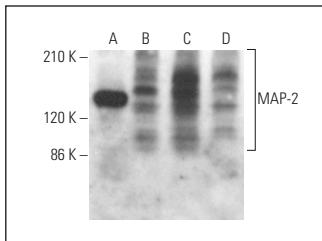
Molecular Weight of MAP-2 low molecular weight isoform: 70 kDa.

Positive Controls: HEK293 whole cell lysate: sc-45136, Neuro-2A whole cell lysate: sc-364185 or C6 whole cell lysate: sc-364373.

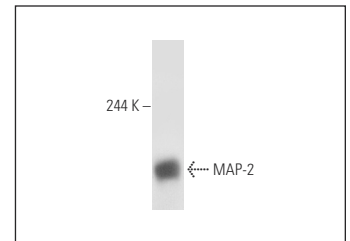
RECOMMENDED SUPPORT REAGENTS

To ensure optimal results, the following support reagents are recommended: 1) Western Blotting: use m-IgGκ BP-HRP: sc-516102 or m-IgGκ BP-HRP (Cruz Marker): sc-516102-CM (dilution range: 1:1000-1:10000), Cruz Marker™ Molecular Weight Standards: sc-2035, UltraCruz® Blocking Reagent: sc-516214 and Western Blotting Luminol Reagent: sc-2048. 2) Immunoprecipitation: use Protein A/G PLUS-Agarose: sc-2003 (0.5 ml agarose/2.0 ml). 3) Immunofluorescence: use m-IgGκ BP-FITC: sc-516140 or m-IgGκ BP-PE: sc-516141 (dilution range: 1:50-1:200) with UltraCruz® Mounting Medium: sc-24941 or UltraCruz® Hard-set Mounting Medium: sc-359850. 4) Immunohistochemistry: use m-IgGκ BP-HRP: sc-516102 with DAB, 50X: sc-24982 and Immunohistomount: sc-45086, or Organo/Limonene Mount: sc-45087.

DATA



MAP-2 (SPM284): sc-56561. Western blot analysis of MAP-2 expression in HEK293 (A), Neuro-2A (B), C6 (C) and SK-N-SH (D) whole cell lysates.



MAP-2 (SPM284): sc-56561. Western blot analysis of MAP-2 expression in 293T whole cell lysates.

SELECT PRODUCT CITATIONS

1. Chang, C.Y., et al. 2020. WNT3A promotes neuronal regeneration upon traumatic brain injury. *Int. J. Mol. Sci.* 21 pii: E1463.

STORAGE

Store at 4° C, **DO NOT FREEZE**. Stable for one year from the date of shipment. Non-hazardous. No MSDS required.

RESEARCH USE

For research use only, not for use in diagnostic procedures.

PROTOCOLS

See our web site at www.scbt.com for detailed protocols and support products.



See **MAP-2 (A-4): sc-74421** for MAP-2 antibody conjugates, including AC, HRP, FITC, PE, and Alexa Fluor® 488, 546, 594, 647, 680 and 790.