

TLR6 (S-14): sc-5661

BACKGROUND

Six human homologs of the *Drosophila* Toll receptor were initially identified based on their sequence similarities and designated Toll-like receptors (TLR). Toll receptors are involved in mediating dorsoventral polarization in the developing *Drosophila* embryo and also participate in the host immunity. The TLR family of proteins are characterized by a highly conserved Toll homology (TH) domain, which is essential for Toll-induced signal transduction. TLR1, as well as the other TLR family members, are type-I transmembrane receptors that characteristically contain an extracellular domain consisting of several leucine-rich regions along with a single cytoplasmic Toll/IL-1R-like domain. TLR2 and TLR4 are activated in response to lipopolysaccharide (LPS) stimulation, which results in the activation and translocation of NF κ B and suggests that these receptors are involved in mediating inflammatory responses. Expression of TLR receptors is highest in peripheral blood leukocytes, macrophages, and monocytes. TLR6 is highly homologous to TLR1, sharing greater than 65% sequence identity, and, like other members of TLR family, it induces NF κ B signaling upon activation.

REFERENCES

- Gay, N.J., et al. 1991. *Drosophila* Toll and IL-1 receptor. *Nature* 351: 355-356.
- Medzhitov, R., et al. 1997. A human homologue of the *Drosophila* Toll protein signals activation of adaptive immunity. *Nature* 388: 394-397.
- Rock, F.L., et al. 1998. A family of human receptors structurally related to *Drosophila* Toll. *Proc. Natl. Acad. Sci. USA* 95: 588-593.
- Brightbill, H.D., et al. 1999. Host defense mechanisms triggered by microbial lipoproteins through Toll-like receptors. *Science* 285: 732-736.
- Schwandner, R., et al. 1999. Peptidoglycan- and lipoteichoic acid-induced cell activation is mediated by Toll-like receptor 2. *J. Biol. Chem.* 274: 17406-17409.
- Takeuchi, O., et al. 1999. TLR6: A novel member of an expanding Toll-like receptor family. *Gene* 231: 59-65.

CHROMOSOMAL LOCATION

Genetic locus: TLR6 (human) mapping to 4p14; Tlr6 (mouse) mapping to 5 C3.1.

SOURCE

TLR6 (S-14) is an affinity purified goat polyclonal antibody raised against a peptide mapping at the N-terminus of TLR6 of mouse origin.

PRODUCT

Each vial contains 200 μ g IgG in 1.0 ml of PBS with < 0.1% sodium azide and 0.1% gelatin.

Blocking peptide available for competition studies, sc-5661 P, (100 μ g peptide in 0.5 ml PBS containing < 0.1% sodium azide and 0.2% BSA).

RESEARCH USE

For research use only, not for use in diagnostic procedures.

APPLICATIONS

TLR6 (S-14) is recommended for detection of TLR6 of mouse and rat origin by Western Blotting (starting dilution 1:200, dilution range 1:100-1:1000), immunoprecipitation [1-2 μ g per 100-500 μ g of total protein (1 ml of cell lysate)], immunofluorescence (starting dilution 1:50, dilution range 1:50-1:500) and solid phase ELISA (starting dilution 1:30, dilution range 1:30-1:3000).

Suitable for use as control antibody for TLR6 siRNA (m): sc-40265, TLR6 shRNA Plasmid (m): sc-40265-SH and TLR6 shRNA (m) Lentiviral Particles: sc-40265-V.

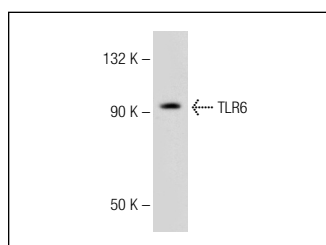
Molecular Weight of TLR6: 96 kDa.

Positive Controls: RAW 309 cell lysate: sc-3814 or I-11.15 whole cell lysate.

RECOMMENDED SECONDARY REAGENTS

To ensure optimal results, the following support (secondary) reagents are recommended: 1) Western Blotting: use donkey anti-goat IgG-HRP: sc-2020 (dilution range: 1:2000-1:100,000) or Cruz Marker[™] compatible donkey anti-goat IgG-HRP: sc-2033 (dilution range: 1:2000-1:5000), Cruz Marker[™] Molecular Weight Standards: sc-2035, TBS Blotto A Blocking Reagent: sc-2333 and Western Blotting Luminol Reagent: sc-2048. 2) Immunoprecipitation: use Protein A/G PLUS-Agarose: sc-2003 (0.5 ml agarose/2.0 ml). 3) Immunofluorescence: use donkey anti-goat IgG-FITC: sc-2024 (dilution range: 1:100-1:400) or donkey anti-goat IgG-TR: sc-2783 (dilution range: 1:100-1:400) with UltraCruz[™] Mounting Medium: sc-24941.

DATA



TLR6 (S-14): sc-5661. Western blot analysis of TLR6 expression in I-11.15 whole cell lysate.

STORAGE

Store at 4° C, ****DO NOT FREEZE****. Stable for one year from the date of shipment. Non-hazardous. No MSDS required.

PROTOCOLS

See our web site at www.scbt.com or our catalog for detailed protocols and support products.