

## E2F-2 (TFE22): sc-56664

### BACKGROUND

The human retinoblastoma gene product appears to play an important role in the negative regulation of cell proliferation. Functional inactivation of Rb can be mediated either through mutation or as a consequence of interaction with DNA tumor virus-encoded proteins. Of all the Rb associations described to date, the identification of a complex between Rb and the transcription factor E2F most directly implicates Rb in regulation of cell proliferation. E2F was originally identified through its role in transcriptional activation of the Adenovirus E2 promoter. Sequences homologous to the E2F binding site have been found upstream of a number of genes that encode proteins with putative functions in the G<sub>1</sub>/S phases of the cell cycle. E2F-1 is a member of a broader family of transcription regulators including E2F-2, E2F-3, E2F-4, E2F-5, E2F-6 and E2F-7 each of which forms heterodimers with a second protein, DP-1, forming an "active" E2F transcriptional regulatory complex.

### REFERENCES

- Chellappan, S., et al. 1991. The E2F transcription factor is a cellular target for the Rb protein. *Cell* 65: 1053-1061.
- Chittenden, T., et al. 1991. The T/E1A-binding domain of the retinoblastoma product can interact selectively with a sequence-specific DNA-binding protein. *Cell* 65: 1073-1082.
- Helin, K., et al. 1992. A cDNA encoding a pRb-binding protein with properties of the transcription factor E2F. *Cell* 70: 337-350.
- Helin, K., et al. 1993. Heterodimerization of the transcription factors E2F-1 and DP-1 leads to cooperative *trans*-activation. *Genes Dev.* 7: 1850-1861.
- Krek, W., et al. 1993. Binding to DNA and the retinoblastoma gene product promoted by complex formation of different E2F family members. *Science* 262: 1557-1560.
- Ginsberg, D., et al. 1994. E2F-4, a new member of the E2F transcription factor family, interacts with p107. *Genes Dev.* 8: 2665-2679.
- Beijersbergen, R.L., et al. 1994. E2F-4, a new member of the E2F gene family, has oncogenic activity and associates with p107 *in vivo*. *Genes Dev.* 8: 2680-2690.

### CHROMOSOMAL LOCATION

Genetic locus: E2F2 (human) mapping to 1p36.12; E2f2 (mouse) mapping to 4 D3.

### SOURCE

E2F-2 (TFE22) is a mouse monoclonal antibody raised against full length E2F-2 of human origin.

### PRODUCT

Each vial contains 200 µg IgG<sub>1</sub> kappa light chain in 1.0 ml of PBS with < 0.1% sodium azide and 0.1% gelatin.

### STORAGE

Store at 4° C, **\*\*DO NOT FREEZE\*\***. Stable for one year from the date of shipment. Non-hazardous. No MSDS required.

### APPLICATIONS

E2F-2 (TFE22) is recommended for detection of E2F-2 of mouse, rat and human origin by Western Blotting (starting dilution 1:200, dilution range 1:100-1:1000), immunoprecipitation [1-2 µg per 100-500 µg of total protein (1 ml of cell lysate)], immunofluorescence (starting dilution 1:50, dilution range 1:50-1:500) and solid phase ELISA (starting dilution 1:30, dilution range 1:30-1:3000).

Suitable for use as control antibody for E2F-2 siRNA (h): sc-29298, E2F-2 siRNA (m): sc-29299, E2F-2 shRNA Plasmid (h): sc-29298-SH, E2F-2 shRNA Plasmid (m): sc-29299-SH, E2F-2 shRNA (h) Lentiviral Particles: sc-29298-V and E2F-2 shRNA (m) Lentiviral Particles: sc-29299-V.

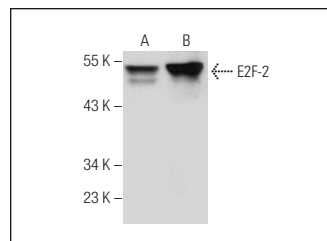
Molecular Weight of E2F-2: 55 kDa.

Positive Controls: PC-12 + NGF cell lysate: sc-3808, PC-12 cell lysate: sc-2250 or KNRK nuclear extract: sc-2141.

### RECOMMENDED SUPPORT REAGENTS

To ensure optimal results, the following support reagents are recommended: 1) Western Blotting: use m-IgGκ BP-HRP: sc-516102 or m-IgGκ BP-HRP (Cruz Marker): sc-516102-CM (dilution range: 1:1000-1:10000), Cruz Marker™ Molecular Weight Standards: sc-2035, TBS Blotto A Blocking Reagent: sc-2333 and Western Blotting Luminol Reagent: sc-2048. 2) Immunoprecipitation: use Protein A/G PLUS-Agarose: sc-2003 (0.5 ml agarose/2.0 ml). 3) Immunofluorescence: use m-IgGκ BP-FITC: sc-516140 or m-IgGκ BP-PE: sc-516141 (dilution range: 1:50-1:200) with UltraCruz® Mounting Medium: sc-24941 or UltraCruz® Hard-set Mounting Medium: sc-359850.


### DATA



E2F-2 (TFE22): sc-56664. Western blot analysis of E2F-2 expression in untreated (A) and NGF treated (B) PC-12 whole cell lysates.

### RESEARCH USE

For research use only, not for use in diagnostic procedures.



See **E2F-2 (TFE-25): sc-9967** for E2F-2 antibody conjugates, including AC, HRP, FITC, PE, Alexa Fluor® 488 and Alexa Fluor® 647.