

IL-2R α (B-F2): sc-57294

BACKGROUND

The IL-2 receptor is a multicomponent complex consisting of three subunits, α , β and γ , each of which is required for high affinity binding of IL-2. The α chain functions primarily in binding IL-2, whereas the β and γ chains contribute to IL-2 binding and are essential to IL-2-induced activation of signaling pathways leading to T cell growth. Both IL-4R and IL-7R were initially described as single chain, high-affinity ligand-binding cytokine receptors. However, it is now well established that the IL-2R γ chain functions as a second subunit of the high affinity IL-4R and IL-7R receptors. Consequently, the originally described subunits of these latter receptors are now referred to as IL-4R α and IL-7R α , respectively, while the common subunit is referred to as γ -c. Although the common γ chain enhances ligand binding in these three cytokine receptors, it has no capacity to bind these ligands on its own. There is evidence that the γ -c chain is also a subunit of IL-13R.

REFERENCES

- Mosley, B., Beckmann, M.P., March, C.J., Idzerda, R.L., Gimpel, S.D., VandenBos, T., Friend, D., Alpert, A., Anderson, D. and Jackson, J. 1989. The murine interleukin-4 receptor: molecular cloning and characterization of secreted and membrane bound forms. *Cell* 59: 335-348.
- Goodwin, R.G., Friend, D., Ziegler, S.F., Jerzy, R., Falk, B.A., Gimpel, S., Cosman, D., Dower, S.K., March, C.J. and Namen, A.E. 1990. Cloning of the human and murine interleukin-7 receptors: demonstration of a soluble form and homology to a new receptor superfamily. *Cell* 60: 941-951.
- Takeshita, T., Asao, H., Ohtani, K., Ishii, N., Kumaki, S., Tanaka, N., Munakata, H., Nakamura, M. and Sugamura, K. 1992. Cloning of the γ chain of the human IL-2 receptor. *Science* 257: 379-382.
- Cao, X., Kozak, C.A., Liu, Y.J., Noguchi, M., O'Connell, E. and Leonard, W.J. 1993. Characterization of cDNAs encoding the murine interleukin-2 receptor (IL-2R) γ chain: chromosomal mapping and tissue specificity of IL-2R γ chain expression. *Proc. Natl. Acad. Sci. USA* 90: 8464-8468.
- Minami, Y., Kono, T., Miyazaki, T. and Taniguchi, T. 1993. The IL-2 receptor complex: its structure, function and target genes. *Annu. Rev. Immunol.* 11: 245-268.
- Kondo, M., Takeshita, T., Ishii, N., Nakamura, M., Watanabe, S., Arai, K. and Sugamura, K. 1993. Sharing of the interleukin-2 (IL-2) receptor γ chain between receptors for IL-2 and IL-4. *Science* 262: 1874-1877.
- Russell, S.M., Keegan, A.D., Harada, N., Nakamura, Y., Noguchi, M., Leland, P., Friedmann, M.C., Miyajima, A., Puri, R.K. and Paul, W.E. 1993. Interleukin-2 receptor γ chain: a functional component of the interleukin-4 receptor. *Science* 262: 1880-1883.

CHROMOSOMAL LOCATION

Genetic locus: IL2RA (human) mapping to 10p15.1.

SOURCE

IL-2R α (B-F2) is a mouse monoclonal antibody raised against PHA-activated T cells of human origin.

PRODUCT

Each vial contains 100 μ g IgG₁ in 1.0 ml of PBS with < 0.1% sodium azide, 0.1% gelatin and 1% BSA.

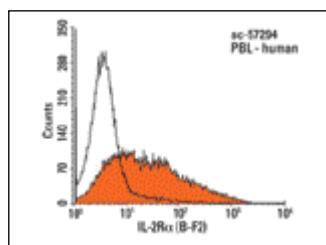
APPLICATIONS

IL-2R α (B-F2) is recommended for detection of IL-2R α of human origin by flow cytometry (1 μ g per 1 x 10⁶ cells).

Suitable for use as control antibody for IL-2R α siRNA (h): sc-29367, IL-2R α shRNA Plasmid (h): sc-29367-SH and IL-2R α shRNA (h) Lentiviral Particles: sc-29367-V.

Molecular Weight of IL-2R α : 55 kDa.

DATA



IL-2R α (B-F2): sc-57294. Indirect FCM analysis of PMA-stimulated human peripheral blood leukocytes stained with IL-2R α (B-F2), followed by PE-conjugated goat anti-mouse IgG: sc-3738. Black line histogram represents the isotype control, normal mouse IgG₁: sc-3877.

STORAGE

Store at 4° C, ****DO NOT FREEZE****. Stable for one year from the date of shipment. Non-hazardous. No MSDS required.

RESEARCH USE

For research use only, not for use in diagnostic procedures.

PROTOCOLS

See our web site at www.scbt.com or our catalog for detailed protocols and support products.