

TrpE (17): sc-57607

BACKGROUND

TrpE, also referred to as anthranilate synthetase, is a fusion protein. A useful cellular marker, TrpE is regulated through feedback inhibition by tryptophan. The TrpE gene product helps define the expression of a multitude of biologically active proteins. Insoluble and resistant to proteolysis, TrpE constructs can be produced in high yields. Monoclonal antibodies against the TrpE protein are very advantageous as immunoaffinity reagents. A common tag in protein expression systems, TrpE remains relevant for hydrophobic interaction chromatographic purification techniques as well. Studies show utility for this protein as a tool of both research and protein purification.

REFERENCES

1. Bae, Y.M. and Crawford, I.P. 1990. The *Rhizobium meliloti* TrpE(G) gene is regulated by attenuation, and its product, anthranilate synthase, is regulated by feedback inhibition. *J. Bacteriol.* 172: 3318-3327.
2. Shiratsuchi, A. and Sato, S. 1991. Nucleotide sequence of TrpE, anthranilate synthase I gene, of *Bacillus caldotenax*. *Biochim. Biophys. Acta* 1090: 348-350.
3. Fonseca, B.A., Khoshnood, K., Shope, R.E. and Mason, P.W. 1991. Flavivirus type-specific antigens produced from fusions of a portion of the E protein gene with the *Escherichia coli* TrpE gene. *Am. J. Trop. Med. Hyg.* 44: 500-508.
4. Giavedoni, L.D., Kaplan, G., Marcovecchio, F., Piccone, M.E. and Palma, E.L. 1991. Protection conferred by TrpE fusion proteins containing portions of the C-terminal region of capsid protein VP1 of foot-and-mouth disease virus. *J. Gen. Virol.* 72: 967-971.
5. Nurse, F., Dagan, S., Tackney, C. and Goldstein, N.I. 1992. Isolation of a monoclonal antibody to the TrpE protein and its use for the purification of recombinant fusion proteins. *Hybridoma* 10: 753-760.
6. Atkinson, B., Liu, Z.Q. and Wood, C. 1992. Use of bacterial TrpE fusion vectors to express and characterize the bovine immunodeficiency-like virus core protein. *J. Virol. Methods* 36: 35-49.
7. Mercy, M.R., Troncoso, J.C. and Monteiro, M.J. 1992. A new series of TrpE vectors that enable high expression of nonfusion proteins in bacteria. *Protein Expr. Purif.* 3: 57-64.
8. Chen, P., Liu, Z.Q. and Wood, C. 1994. Use of TrpE fusion protein to identify antigenic domains within the BIV envelope protein. *J. Virol. Methods* 47: 331-343.

SOURCE

TrpE (17) is a mouse monoclonal antibody raised against recombinant TrpE.

PRODUCT

Each vial contains 100 µg IgG₁ kappa light chain in 1.0 ml of PBS with < 0.1% sodium azide and 0.1% gelatin.

STORAGE

Store at 4° C, ****DO NOT FREEZE****. Stable for one year from the date of shipment. Non-hazardous. No MSDS required.

APPLICATIONS

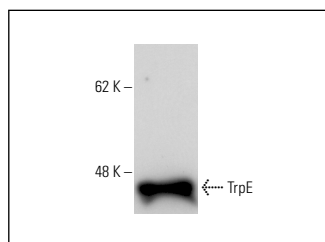
TrpE (17) is recommended for detection of TrpE by Western Blotting (starting dilution 1:200, dilution range 1:100-1:1000) and immunoprecipitation [1-2 µg per 100-500 µg of total protein (1 ml of cell lysate)].

Molecular Weight of TrpE: 37 kDa.

RECOMMENDED SUPPORT REAGENTS

To ensure optimal results, the following support reagents are recommended: 1) Western Blotting: use m-IgGκ BP-HRP: sc-516102 or m-IgGκ BP-HRP (Cruz Marker): sc-516102-CM (dilution range: 1:1000-1:10000), Cruz Marker™ Molecular Weight Standards: sc-2035, UltraCruz® Blocking Reagent: sc-516214 and Western Blotting Luminol Reagent: sc-2048. 2) Immunoprecipitation: use Protein A/G PLUS-Agarose: sc-2003 (0.5 ml agarose/2.0 ml).

DATA



TrpE (17): sc-57607. Western blot analysis of purified TrpE protein.

RESEARCH USE

For research use only, not for use in diagnostic procedures.

PROTOCOLS

See our web site at www.scbt.com for detailed protocols and support products.