

HTLV-1 p24 (46/3.24.4): sc-57871

BACKGROUND

Human T-lymphotropic virus (HTLV) is a single-stranded RNA retrovirus that causes T cell leukemia and T cell lymphoma in human adults and may be involved in a few demyelinating diseases. HTLV-1 is a member of the HTLV family that is associated with several kinds of diseases, including HTLV-1-associated myelopathy, infection with *Strongyloides stercoralis* and a virus cancer link to leukemia. HTLV-1 transmission probably occurs via sexual contact, childbirth and exposure to contaminated blood. HTLV-1 p19 and p24 are major core viral proteins encoded by the gag gene. Differential antibody responsiveness to p19 gag can be used in the serological discrimination between HTLV-1 and HTLV-2.

REFERENCES

- Greaves, M.F., Verbi, W., Tilley, R., Lister, T.A., Habeshaw, J., Trainor, C.D., Robert-Guroff, Guo, H.G., M., Blattner, W. and Reitz, M. 1984. Human T cell leukemia virus (HTLV) in the United Kingdom. *Int. J. Cancer* 33: 795-806.
- Lal, R.B., Brodine, S.K., Coligan, J.E. and Roberts, C.R. 1992. Differential antibody responsiveness to p19 gag results in serological discrimination between human T-lymphotropic virus type 1 and type 2. *J. Med. Virol.* 35: 232-236.
- Ebersold, A., Noraz, N., Grange, J., Gasmi, M., Grange, M.P., Souche, S., Mamoun, R. and Desgranges, C. 1993. Production and characterization of a monoclonal antibody directed against HTLV-1 p19: use in a specific capture enzyme immunoassay. *Hybridoma* 12: 185-195.
- Takahashi, H. 1993. Molecular characterization of human T cell lymphotropic virus type 2. *Hokkaido Igaku Zasshi* 68: 485-95.
- Zrein, M., Louwagie, J., Boeykens, H., Govers, L., Hendrickx, G., Bosman, F., Sablon, E., Demarquilly, C., Boniface, M. and Saman, E. 1998. Assessment of a new immunoassay for serological confirmation and discrimination of human T cell lymphotropic virus infections. *Clin. Diagn. Lab. Immunol.* 5: 45-49.
- Ding, Y.S., Rich, D.H. and Ikeda, R.A. 1999. Substrates and inhibitors of human T cell leukemia virus type 1 protease. *Biochemistry* 37: 17514-17518.
- Xie, L. and Green, P.L. 2005. Envelope is a major viral determinant of the distinct *in vitro* cellular transformation tropism of human T cell leukemia virus type 1 (HTLV-1) and HTLV-2. *J. Virol.* 79: 14536-14545.
- Hiraragi, H., Kim, S.J., Phipps, A.J., Silic-Benusi, M., Ciminale, V., Ratner, L., Green, P.L. and Lairmore, M.D. 2006. Human T-lymphotropic virus type 1 mitochondrion-localizing protein p13(II) is required for viral infectivity *in vivo*. *J. Virol.* 80: 3469-3476.
- Yao, K., Hisada, M., Maloney, E., Yamano, Y., Hanchard, B., Wilks, R., Rios, M. and Jacobson, S. 2006. Human T-lymphotropic virus types 1 and 2 Western blot seroindeterminate status and its association with exposure to prototype HTLV-1. *J. Infect. Dis.* 193: 427-437.

SOURCE

HTLV-1 p24 (46/3.24.4) is a mouse monoclonal antibody raised against HTLV-1 p24.

PRODUCT

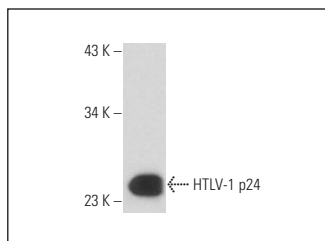
Each vial contains 100 µg IgG₁ in 1.0 ml of PBS with < 0.1% sodium azide and 0.1% gelatin.

APPLICATIONS

HTLV-1 p24 (46/3.24.4) is recommended for detection of HTLV-1 p24 of HTLV-1 origin by Western Blotting (starting dilution 1:200, dilution range 1:100-1:1000) and immunoprecipitation [1-2 µg per 100-500 µg of total protein (1 ml of cell lysate)]; may cross-react with HTLV-2 p24.

Molecular Weight of HTLV-1 p24: 44 kDa.

DATA



HTLV-1 p24 (46/3.24.4): sc-57871. Western blot analysis of HTLV-1 recombinant p24 core protein.

STORAGE

Store at 4° C, ****DO NOT FREEZE****. Stable for one year from the date of shipment. Non-hazardous. No MSDS required.

RESEARCH USE

For research use only, not for use in diagnostic procedures.

PROTOCOLS

See our web site at www.scbt.com for detailed protocols and support products.