

Tup1 (Clone 10): sc-58065

BACKGROUND

Maximal expression of G₁ cyclins is induced by the heterodimeric transcription factor complex, which is composed of the DNA-binding subunit Swi4 (also designated Art1) and Swi6. In addition to binding Swi4, Swi6 forms a complex with Mbp1 that activates S phase cyclins and genes involved in DNA synthesis. Rpb1 is the largest subunit of the yeast RNA polymerase II. Srb4 is a basal transcription factor that is essential for the establishment of the transcription initiation apparatus. Ssn6, a tandem tetratricopeptide repeat-containing protein, associates with Tup1 to form a general transcriptional repression complex. The yeast SNF/SWI complex is required for transcriptional activation of diverse genes and has been shown to alter chromatin structure. This complex has at least ten components, including Snf2 (alternatively designated Swi2, Ric1 or Gam1), Snf5, Snf6, Swi1 (alternatively designated Adr6 or Gam3) and Swi3, and has been widely conserved. Transcriptional activators Snf2 and Snf5 function by antagonizing repression mediated by nucleosomes.

REFERENCES

- Hirschhorn, J.N., Brown, S.A., Clark, C.D. and Winston, F. 1992. Evidence that Snf2/Swi2 and Snf5 activate transcription in yeast by altering chromatin structure. *Genes Dev.* 6: 2288-2298.
- Koch, T., Moll, T., Neuberger, M., Ahorn, H. and Nasmyth, K. 1993. A role for the transcription factors Mbp1 and Swi4 in progression from G₁/S phase. *Science* 261: 1551-1557.
- Treich, I., Cairns, B.R., de los Santos, T., Brewster, E. and Carlson, M. 1995. Snf11, a new component of the yeast SNF/SWI complex that interacts with a conserved region of Snf2. *Mol. Cell. Biol.* 15: 4240-4248.
- Koch, C., Schlieffer, A., Ammerer, G. and Nasmyth, K. 1996. Switching transcription on and off during the yeast cell cycle: Cln/Cdc28 kinases activate bound transcription factor SBF (Swi4/Swi6) at start, whereas Clb/Cdc28 kinases displace it from the promoter in G₂. *Genes Dev.* 10: 129-141.
- Siegmund, R.F. and Nasmyth, K.A. 1996. The *Saccharomyces cerevisiae* Start-specific transcription factor Swi4 interacts through the ankyrin repeats with the mitotic Clb2/Cdc28 kinase and through its conserved carboxy-terminus with Swi6. *Mol. Cell. Biol.* 16: 2647-2655.
- Harrington, L.A. and Andrews, B.J. 1996. Binding to the yeast Swi4,6-dependent cell cycle box, CACGAAA, is cell cycle regulated *in vivo*. *Nucleic Acids Res.* 24: 558-565.
- Holstege, F.C., Jennings, E.G., Wyrick, J.J., Lee, T.I., Hengartner, C.J., Green, M.R., Golub, T.R., Lander, E.S. and Young, R.A. 1998. Dissecting the regulatory circuitry of a eukaryotic genome. *Cell* 95: 717-728.
- Limbach, M.P. and Zitomer, R.S. 2000. The isolation and characterization of missense mutants in the general repressor protein Ssn6 of *Saccharomyces cerevisiae*. *Mol. Gen. Genet.* 263: 455-462.

STORAGE

Store at 4° C, ****DO NOT FREEZE****. Stable for one year from the date of shipment. Non-hazardous. No MSDS required.

SOURCE

Tup1 (Clone 10) is a mouse monoclonal antibody raised against a recombinant protein corresponding to amino acids 1-200 of Tup1 of *Saccharomyces cerevisiae* origin.

PRODUCT

Each vial contains 100 µg IgG₁ kappa light chain in 1.0 ml of PBS with < 0.1% sodium azide and 0.1% gelatin.

APPLICATIONS

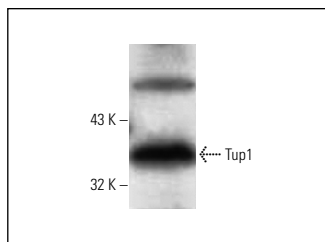
Tup1 (Clone 10) is recommended for detection of Tup1 of *Saccharomyces cerevisiae* origin by Western Blotting (starting dilution 1:200, dilution range 1:100-1:1000) and immunoprecipitation [1-2 µg per 100-500 µg of total protein (1 ml of cell lysate)].

Molecular Weight of Tup1: 78 kDa.

RECOMMENDED SUPPORT REAGENTS

To ensure optimal results, the following support reagents are recommended: 1) Western Blotting: use m-IgGκ BP-HRP: sc-516102 or m-IgGκ BP-HRP (Cruz Marker): sc-516102-CM (dilution range: 1:1000-1:10000), Cruz Marker™ Molecular Weight Standards: sc-2035, UltraCruz® Blocking Reagent: sc-516214 and Western Blotting Luminol Reagent: sc-2048. 2) Immunoprecipitation: use Protein A/G PLUS-Agarose: sc-2003 (0.5 ml agarose/2.0 ml).

DATA



Tup1 (Clone 10): sc-58065. Western blot analysis of yeast recombinant Tup1 protein.

RESEARCH USE

For research use only, not for use in diagnostic procedures.

PROTOCOLS

See our web site at www.scbt.com for detailed protocols and support products.