

Na⁺/K⁺-ATPase β1 (M17-P5-F11): sc-58627

BACKGROUND

The ubiquitously expressed sodium/potassium-ATPase (Na⁺/K⁺-ATPase) exists as a oligomeric plasma membrane complex that couples the hydrolysis of one molecule of ATP to the importation of three Na⁺ ions and two K⁺ ions against their respective electrochemical gradients. As a member of the P-type family of ion motives, Na⁺/K⁺-ATPase plays a critical role in maintaining cellular volume, resting membrane potential and Na⁺-coupled solute transport. Multiple isoforms of three subunits, α, β and γ, comprise to form the Na⁺/K⁺-ATPase oligomer. The α subunit contains the binding sites for ATP and the cations; the glycosylated β subunit ensures correct folding and membrane insertion of the α subunits. The small γ subunit co-localizes with the α subunit in nephron segments, where it increases the affinity of Na⁺/K⁺-ATPase for ATP. The β subunit, but not the γ subunit, is essential for normal activity of Na⁺/K⁺-ATPase.

REFERENCES

1. Hardwicke, P.M., et al. 1981. A proteolipid associated with Na/K-ATPase is not essential for ATPase activity. *Biochem. Biophys. Res. Commun.* 102: 250-257.
2. Ackermann, U., et al. 1990. Mutual dependence of Na/K-ATPase α and β subunits for correct posttranslational processing and intracellular transport. *FEBS Lett.* 269: 105-108.
3. McDonough, A.A., et al. 1990. The sodium pump needs its β subunit. *FASEB J.* 4: 1598-1605.
4. Pedemonte, C.H., et al. 1990. Chemical modification as an approach to elucidation of sodium pump structure-function relations. *Am. J. Physiol.* 258: C1-C23.
5. Mercer, R.W., et al. 1993. Molecular cloning and immunological characterization of the γ-polypeptide, a small protein associated with Na/K-ATPase. *J. Cell Biol.* 121: 579-586.
6. DeTomaso, A.W., et al. 1993. Expression, targeting, and assembly of functional Na/K-ATPase polypeptides in baculovirus-infected insect cells. *J. Biol. Chem.* 268: 1470-1478.
7. Scheiner-Bobis, G., et al. 1994. Subunit requirements for expression of functional sodium pumps in yeast cells. *Biochim. Biophys. Acta* 1193: 226-234.
8. Lingrel, J.B., et al. 1994. Na⁺/K⁺-ATPase. *J. Biol. Chem.* 269: 19659-19662.

CHROMOSOMAL LOCATION

Genetic locus: ATP1B1 (human) mapping to 1q24.2; Atp1b1 (mouse) mapping to 1 H2.2.

SOURCE

Na⁺/K⁺-ATPase β1 (M17-P5-F11) is a mouse monoclonal antibody raised against Na⁺/K⁺-ATPase β1 from kidney tissue of ovine origin.

PRODUCT

Each vial contains 200 μg IgG_{2a} kappa light chain in 1.0 ml of PBS with < 0.1% sodium azide and 0.1% gelatin.

APPLICATIONS

Na⁺/K⁺-ATPase β1 (M17-P5-F11) is recommended for detection of Na⁺/K⁺-ATPase β1 of mouse, rat and human origin by Western Blotting (starting dilution 1:200, dilution range 1:100-1:1000), immunoprecipitation [1-2 μg per 100-500 μg of total protein (1 ml of cell lysate)] and immunofluorescence (starting dilution 1:50, dilution range 1:50-1:500); non cross-reactive with the β1 or β2 subunits in rat.

Na⁺/K⁺-ATPase β1 (M17-P5-F11) is also recommended for detection of Na⁺/K⁺-ATPase β1 in additional species, including ovine and canine.

Suitable for use as control antibody for Na⁺/K⁺-ATPase β1 siRNA (h): sc-36008, Na⁺/K⁺-ATPase β1 siRNA (m): sc-36009, Na⁺/K⁺-ATPase β1 shRNA Plasmid (h): sc-36008-SH, Na⁺/K⁺-ATPase β1 shRNA Plasmid (m): sc-36009-SH, Na⁺/K⁺-ATPase β1 shRNA (h) Lentiviral Particles: sc-36008-V and Na⁺/K⁺-ATPase β1 shRNA (m) Lentiviral Particles: sc-36009-V.

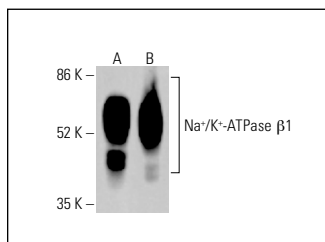
Molecular Weight of Na⁺/K⁺-ATPase β1: 40-60 kDa.

Positive Controls: Hep G2 cell lysate: sc-2227, ARPE-19 whole cell lysate: sc-364357 or HCT-116 whole cell lysate: sc-364175

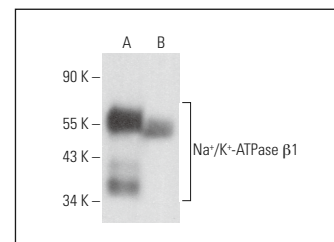
RECOMMENDED SUPPORT REAGENTS

To ensure optimal results, the following support reagents are recommended: 1) Western Blotting: use m-IgGκ BP-HRP: sc-516102 or m-IgGκ BP-HRP (Cruz Marker): sc-516102-CM (dilution range: 1:1000-1:10000), Cruz Marker™ Molecular Weight Standards: sc-2035, UltraCruz® Blocking Reagent: sc-516214 and Western Blotting Luminol Reagent: sc-2048. 2) Immunoprecipitation: use Protein A/G PLUS-Agarose: sc-2003 (0.5 ml agarose/2.0 ml). 3) Immunofluorescence: use m-IgGκ BP-FITC: sc-516140 or m-IgGκ BP-PE: sc-516141 (dilution range: 1:50-1:200) with UltraCruz® Mounting Medium: sc-24941 or UltraCruz® Hard-set Mounting Medium: sc-359850.

DATA



Na⁺/K⁺-ATPase β1 (M17-P5-F11): sc-58627. Western blot analysis of Na⁺/K⁺-ATPase β1 expression in HeLa (A) and HCT-116 (B) whole cell lysates. Detection reagent used: m-IgG Fc BP-HRP: sc-525409.



Na⁺/K⁺-ATPase β1 (M17-P5-F11): sc-58627. Western blot analysis of Na⁺/K⁺-ATPase β1 expression in ARPE-19 (A) and SUP-T1 (B) whole cell lysates.

STORAGE

Store at 4° C, **DO NOT FREEZE**. Stable for one year from the date of shipment. Non-hazardous. No MSDS required.

RESEARCH USE

For research use only, not for use in diagnostic procedures.