

Filamin 1 (FLMN01): sc-58763

BACKGROUND

Caldesmon, Filamin 1, Nebulin and Villin are differentially expressed and regulated Actin binding proteins. Both muscular (CDh) and non-muscular (CDI) forms of Caldesmon have been identified and each has been shown to bind to Actin as well as to calmodulin and Myosin. CDh is expressed predominantly on thin filaments in smooth muscle, whereas CDI is widely expressed in non-muscle tissues and cells. Filamin 1, which is ubiquitously expressed and exists as a homodimer, functions to crosslink Actin to filaments. Nebulin is a large filamentous protein specific to muscle tissue that may function as a ruler for filament length. Several isoforms of Nebulin are produced by alternative exon usage. Villin is Ca²⁺-regulated and is the major structural component of the brush border of absorptive cells.

REFERENCES

- Weihing, R.R. 1988. Actin-binding and dimerization domains of HeLa cell Filamin. *Biochemistry* 27: 1865-1869.
- Marston, S., et al. 1992. Caldesmon binds to smooth muscle Myosin and Myosin rod and crosslink thick filaments to Actin filaments. *J. Muscle Res. Cell Motil.* 13: 206-218.

CHROMOSOMAL LOCATION

Genetic locus: FLNA (human) mapping to Xq28; Flna (mouse) mapping to X A7.3.

SOURCE

Filamin 1 (FLMN01) is a mouse monoclonal antibody raised against full length platelet Filamin 1 of human origin.

PRODUCT

Each vial contains 200 µg IgG₁ kappa light chain in 1.0 ml of PBS with < 0.1% sodium azide and 0.1% gelatin.

APPLICATIONS

Filamin 1 (FLMN01) is recommended for detection of Filamin 1 from platelets, lymphocytes, fibroblasts and smooth muscle of mouse, rat and human origin by Western Blotting (starting dilution 1:200, dilution range 1:100-1:1000), immunoprecipitation [1-2 µg per 100-500 µg of total protein (1 ml of cell lysate)], immunofluorescence (starting dilution 1:50, dilution range 1:50-1:500), immunohistochemistry (including paraffin-embedded sections) (starting dilution 1:50, dilution range 1:50-1:500) and solid phase ELISA (starting dilution 1:30, dilution range 1:30-1:3000).

Suitable for use as control antibody for Filamin 1 siRNA (h): sc-35374, Filamin 1 siRNA (m): sc-35375, Filamin 1 shRNA Plasmid (h): sc-35374-SH, Filamin 1 shRNA Plasmid (m): sc-35375-SH, Filamin 1 shRNA (h) Lentiviral Particles: sc-35374-V and Filamin 1 shRNA (m) Lentiviral Particles: sc-35375-V.

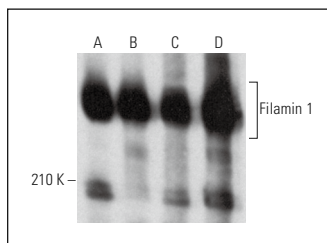
Molecular Weight of Filamin 1: 280 kDa.

Positive Controls: C6 whole cell lysate: sc-364373, RAT2 whole cell lysate: sc-364198 or NIH/3T3 whole cell lysate: sc-2210.

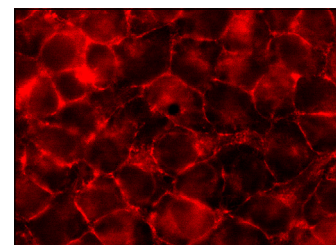
RECOMMENDED SUPPORT REAGENTS

To ensure optimal results, the following support reagents are recommended: 1) Western Blotting: use m-IgGκ BP-HRP: sc-516102 or m-IgGκ BP-HRP (Cruz Marker): sc-516102-CM (dilution range: 1:1000-1:10000), Cruz Marker™ Molecular Weight Standards: sc-2035, UltraCruz® Blocking Reagent: sc-516214 and Western Blotting Luminol Reagent: sc-2048. 2) Immunoprecipitation: use Protein A/G PLUS-Agarose: sc-2003 (0.5 ml agarose/2.0 ml). 3) Immunofluorescence: use m-IgGκ BP-FITC: sc-516140 or m-IgGκ BP-PE: sc-516141 (dilution range: 1:50-1:200) with UltraCruz® Mounting Medium: sc-24941 or UltraCruz® Hard-set Mounting Medium: sc-359850. 4) Immunohistochemistry: use m-IgGκ BP-HRP: sc-516102 with DAB, 50X: sc-24982 and Immunohistomount: sc-45086, or Organo/Limonene Mount: sc-45087.

DATA



Filamin 1 (FLMN01): sc-58763. Western blot analysis of Filamin 1 expression in Jurkat (A), HeLa (B), C32 (C) and U-87 MG (D) whole cell lysates.



Filamin 1 (FLMN01): sc-58763. Immunofluorescence staining of methanol-fixed HeLa cells showing peripheral cytoplasmic localization.

SELECT PRODUCT CITATIONS

- Tan, W., et al. 2017. Ergosterol peroxide inhibits ovarian cancer cell growth through multiple pathways. *Onco Targets Ther.* 10: 3467-3474.

STORAGE

Store at 4° C, **DO NOT FREEZE**. Stable for one year from the date of shipment. Non-hazardous. No MSDS required.

RESEARCH USE

For research use only, not for use in diagnostic procedures.

PROTOCOLS

See our web site at www.scbt.com for detailed protocols and support products.



See **Filamin 1 (E-3): sc-17749** for Filamin 1 antibody conjugates, including AC, HRP, FITC, PE, and Alexa Fluor® 488, 546, 594, 647, 680 and 790.