

Ig λ light chain (ICO106): sc-59267

BACKGROUND

Antibody producing cells of the immune system require multiple rearrangements of immunoglobulin (antibody, Ig) genes. Immunoglobulins are four-chain, Y-shaped, monomeric structures of two identical heavy chains and two identical light chains held together through interchain disulfide bonds. Immunoglobulins in vertebrates help to remove non-self molecules or cells (antigens) by recognizing and binding to the antigen and carrying out effector functions that activate the immune system. Variable genetic combinations of the five heavy chain classes (M, D, G, E and A) and the two light chain isotypes, κ and λ , confer the role of an antibody. The variable region genes encoding immunoglobulin κ and λ chains are assembled from three DNA segments, the V, C and J genes. Human κ light chain genes map to chromosome 2 and the human λ light chain genes map to chromosome 22q11.21. κ gene recombination can precede λ gene recombination during B cell ontogeny and only a single light chain type is expressed in individual B cells. Antibodies in camels and sharks can lack light chain, suggesting that light chain may not be essential for antigen binding in some vertebrates.

REFERENCES

- Hieter, P.A., et al. 1980. Cloned human and mouse κ immunoglobulin constant and J region genes conserve homology in functional segments. *Cell* 22: 197-207.
- Mason, D.W., et al. 1981. The rat mixed lymphocyte reaction: roles of a dendritic cell in intestinal lymph and T cell subsets defined by monoclonal antibodies. *Immunology* 44: 75-87.
- Dyer, M.J., et al. 1981. Committed T lymphocyte stem cells of rats. Characterization by surface W3/13 antigen and radiosensitivity. *J. Exp. Med.* 154: 1164-1177.
- Hieter, P.A., et al. 1982. Evolution of human immunoglobulin κ J region genes. *J. Biol. Chem.* 257: 1516-1522.
- Durdik, J., et al. 1984. Novel κ light chain gene rearrangements in mouse λ light chain-producing B lymphocytes. *Nature* 307: 749-752.
- Horejsi, V., et al. 1986. Monoclonal antibodies against human leukocyte antigens. I. Antibodies against β -2-Microglobulin, immunoglobulin κ light chains, HLA-DR-like antigens, T8 antigen, T1 antigen, a monocyte antigen, and a pan-leukocyte antigen. *Folia Biol.* 32: 12-25.
- Pilstrom, L. 2002. The mysterious immunoglobulin light chain. *Dev. Comp. Immunol.* 26: 207-215.
- Li, M., et al. 2004. Expression of immunoglobulin κ light chain constant region in abnormal human cervical epithelial cells. *Int. J. Biochem. Cell Biol.* 36: 2250-2257.

CHROMOSOMAL LOCATION

Genetic locus: IGL (human) mapping to 22q11.21.

SOURCE

Ig λ light chain (ICO106) is a mouse monoclonal antibody raised against IgG of human origin.

PRODUCT

Each vial contains 200 μ g IgG $_1$ kappa light chain in 1.0 ml of PBS with < 0.1% sodium azide and 0.1% gelatin.

Ig λ light chain (ICO106) is available conjugated to agarose (sc-59267 AC), 500 μ g/0.25 ml agarose in 1 ml, for IP; to either phycoerythrin (sc-59267 PE), fluorescein (sc-59267 FITC), Alexa Fluor[®] 488 (sc-59267 AF488), Alexa Fluor[®] 546 (sc-59267 AF546), Alexa Fluor[®] 594 (sc-59267 AF594) or Alexa Fluor[®] 647 (sc-59267 AF647), 200 μ g/ml, for WB (RGB), IF, IHC(P) and FCM; and to either Alexa Fluor[®] 680 (sc-59267 AF680) or Alexa Fluor[®] 790 (sc-59267 AF790), 200 μ g/ml, for Near-Infrared (NIR) WB, IF and FCM.

Alexa Fluor[®] is a trademark of Molecular Probes, Inc., Oregon, USA

APPLICATIONS

Ig λ light chain (ICO106) is recommended for detection of Ig λ light chain of human origin by Western Blotting (starting dilution 1:200, dilution range 1:100-1:1000), immunoprecipitation [1-2 μ g per 100-500 μ g of total protein (1 ml of cell lysate)] and flow cytometry (1 μ g per 1 x 10⁶ cells).

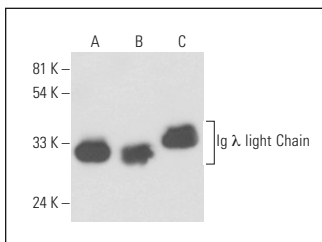
Molecular Weight of Ig λ light chain: 25-30 kDa.

Positive Controls: Ig λ light chain (h): 293T Lysate: sc-114792, Ramos cell lysate: sc-2216 or NAMALWA cell lysate: sc-2234.

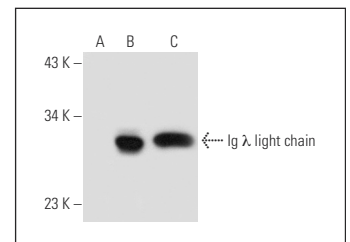
RECOMMENDED SUPPORT REAGENTS

To ensure optimal results, the following support reagents are recommended: 1) Western Blotting: use m-IgG κ BP-HRP: sc-516102 or m-IgG κ BP-HRP (Cruz Marker): sc-516102-CM (dilution range: 1:1000-1:10000), Cruz Marker[™] Molecular Weight Standards: sc-2035, UltraCruz[®] Blocking Reagent: sc-516214 and Western Blotting Luminol Reagent: sc-2048. 2) Immunoprecipitation: use Protein A/G PLUS-Agarose: sc-2003 (0.5 ml agarose/2.0 ml).

DATA



Ig λ light chain (ICO106): sc-59267. Western blot analysis of Ig λ light chain expression in NAMALWA (A), human PBL (B) and Ramos (C) whole cell lysates.



Ig λ light chain (ICO106): sc-59267. Western blot analysis of Ig λ light chain expression in non-transfected 293T: sc-117752 (A), human Ig λ light chain transfected 293T: sc-114792 (B) and NAMALWA (C) whole cell lysates.

STORAGE

Store at 4° C, **DO NOT FREEZE**. Stable for one year from the date of shipment. Non-hazardous. No MSDS required.

RESEARCH USE

For research use only, not for use in diagnostic procedures.